

VOR/DME BVO 117.9 Chan 126	APP CRS 348°	Rwy Idg 6201 TDZE 711 Apt Elev 711
------------------------------------------------	------------------------	---------------------------------------------------------------

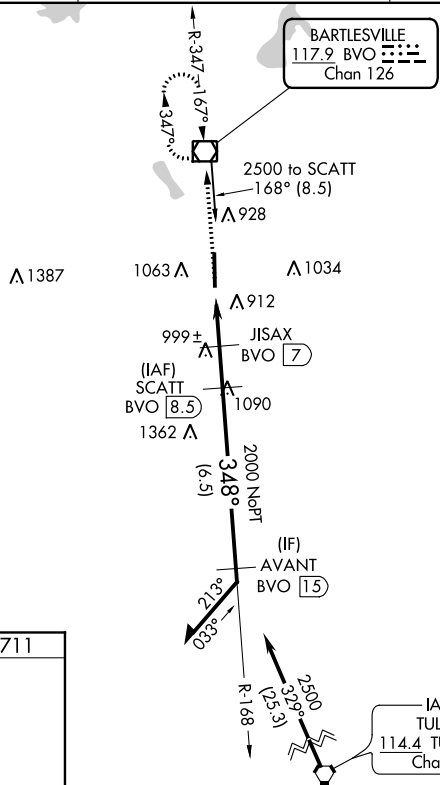
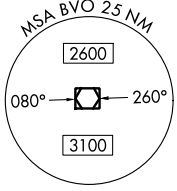
VOR/DME RWY 35

BARTLESVILLE MUNI (BVO)

⚠ Circling NA east of Rwy 17-35. When local altimeter setting not received, use Tulsa Intl altimeter setting and increase all MDAs 100 feet and S-35 and Circling Cat C visibility ¼ SM. VDP NA when using Tulsa Intl altimeter setting.

MISSED APPROACH: Climb to 2500 direct BVO VOR/DME and hold.

AWOS 132.675	KANSAS CITY CENTER 128.8 354.1	UNICOM 122.825 (CTAF) 0
------------------------	------------------------------------------	-----------------------------------

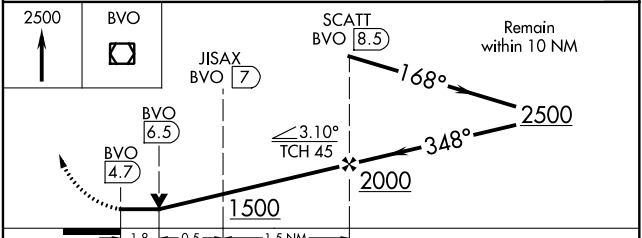


SC-1, 30 DEC 2021 to 27 JAN 2022

SC-1, 30 DEC 2021 to 27 JAN 2022

ELEV 711	TDZE 711
----------	----------

MIRL Rwy 17-35 (348° 3.8 NM from FAF)
REIL Rwy 35



CATEGORY	A	B	C	D
S-35	1320-1	609 (700-1)	1320-1¾ 609 (700-1¾)	NA
C CIRCLING	1400-1	689 (700-1)	1400-2 689 (700-2)	NA