

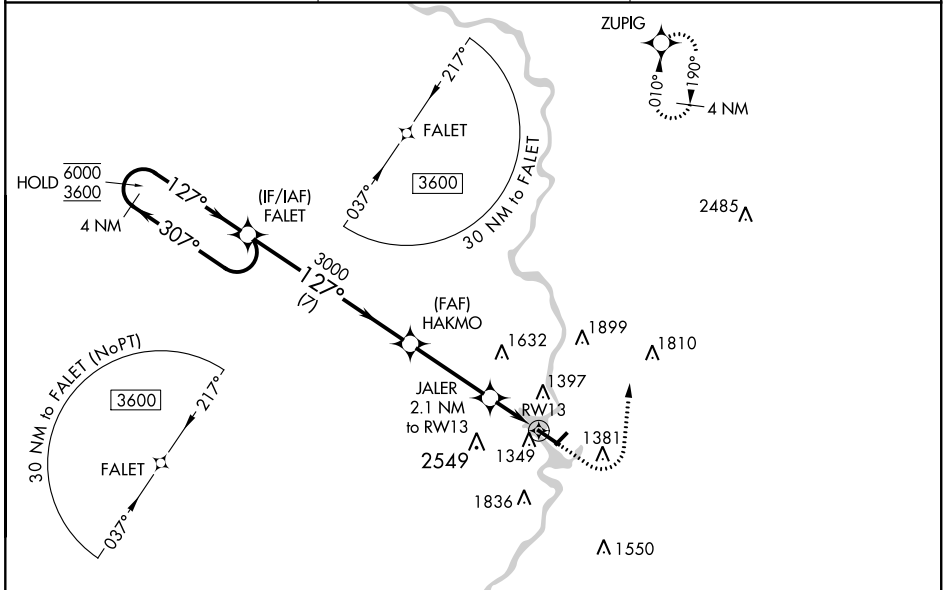
WAAS CH <b>90330</b> <b>W13A</b>	APP CRS <b>127°</b>	Rwy Idg <b>5200</b> TDZE <b>1196</b> Apt Elev <b>1201</b>
--	------------------------	---

# RNAV (GPS) RWY 13

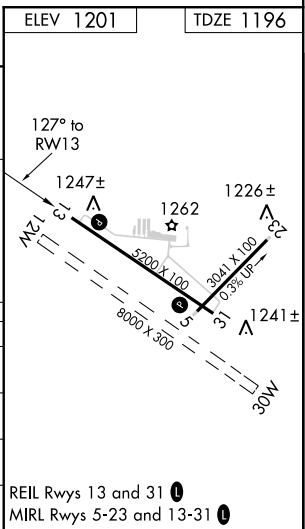
WAUSAU DOWNTOWN (A U W)

RNP APCH.	MISSED APPROACH: Climb to 1800 then climbing left turn to 4000 direct ZUPIG and hold.
<p><b>▼</b> Circling NA to Rws 12W and 30W.  <b>▲</b> Circling NA southwest of Rwy 13-31.                  For uncompensated Baro-VNAV systems, LNAV/VNAV NA below -17°C or above 54°C.</p>	

ASOS <b>125.925</b>	MINNEAPOLIS CENTER <b>124.4 317.7</b>	UNICOM <b>122.7 (CTAF) 0</b>
------------------------	--	---------------------------------



	4 NM Holding Pattern	FALET	HAKMO	JALER	RW13	ZUPIG
	6000 ← 307°	3600 → 127°	3000	2.1 NM to RW13	1.1 NM to RW13	1800, 4000, ZUPIG
	GP 3.00° TCH 43	3000	*1900	*1.1 NM to RW13		*LNAV only.
		7 NM	3.4 NM	1 NM	1.1 NM	
CATEGORY	A	B	C	D		
LPV DA		1446-3/4	250 (300-3/4)			
LNAV/VNAV DA		1534-1 1/8	338 (400-1 1/8)			
LNAV MDA	1600-1	404 (400-1)	1600-1 1/8	404 (400-1 1/8)		
<b>C</b> CIRCLING	1840-1	639 (700-1)	1960-2 1/4	2260-3		
			759 (800-2 1/4)	1059 (1100-3)		



EC-3, 30 DEC 2021 to 27 JAN 2022

EC-3, 30 DEC 2021 to 27 JAN 2022