

WAAS CH 45730 W31A	APP CRS 307°	Rwy Idg 5200 TDZE 1195 Apt Elev 1201
--	------------------------	---

RNAV (GPS) RWY 31

WAUSAU DOWNTOWN (AUW)

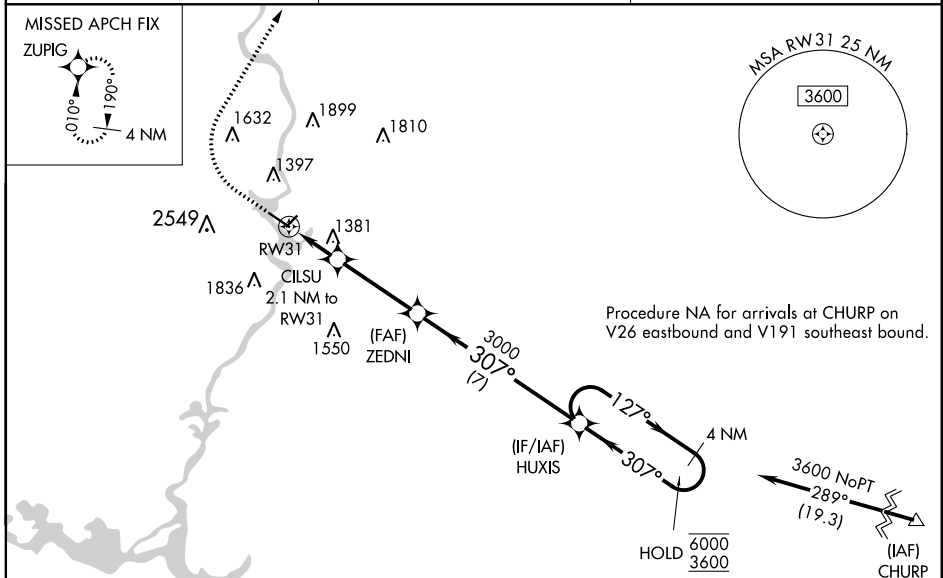
RNP APCH.

⚠ Circling NA to Rws 12W and 30W. Circling NA southwest of Rwy 13-31. For uncompensated Baro-VNAV systems, LNAV/VNAV NA below -21°C or above 54°C.

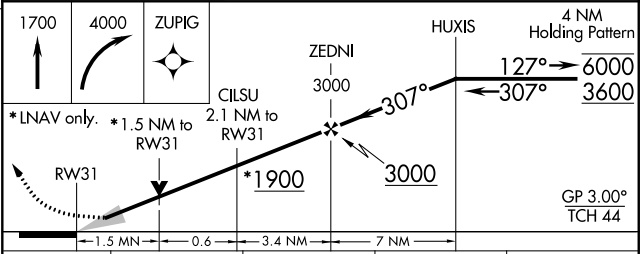
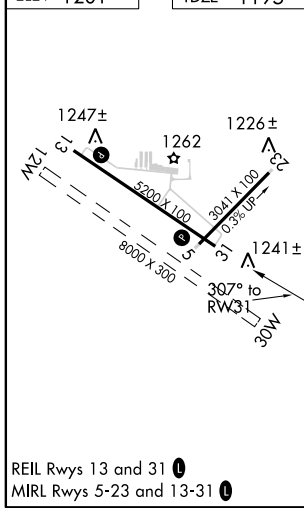
⚠ MISSED APPROACH: Climb to 1700 then climbing right turn to 4000 direct ZUPIG and hold.

****** Missed approach requires minimum climb of 300 feet per NM to 2100.

ASOS 125.925	MINNEAPOLIS CENTER 124.4 317.7	UNICOM 122.7 (CTAF) 0
------------------------	--	---------------------------------



ELEV 1201	TDZE 1195
-----------	-----------



CATEGORY	A	B	C	D
LPV DA	1445-7/8		250 (300-7/8)	
LNAV/VNAV DA	**1505-1		310 (400-1)	
LNAV/VNAV DA	1661-15/8		466 (500-15/8)	
LNAV MDA	1700-1 505 (500-1)		1700-13/8 505 (500-13/8)	
C CIRCLING	1840-1 639 (700-1)		1960-2 759 (800-2) 2260-3 1059 (1100-3)	

EC-3, 30 DEC 2021 to 27 JAN 2022

EC-3, 30 DEC 2021 to 27 JAN 2022