

VOR/DME SNY 115.9 Chan 106	APP CRS 293°	Rwy Idg TDZE Apt Elev	6600 4290 4313
--	------------------------	-----------------------------	---

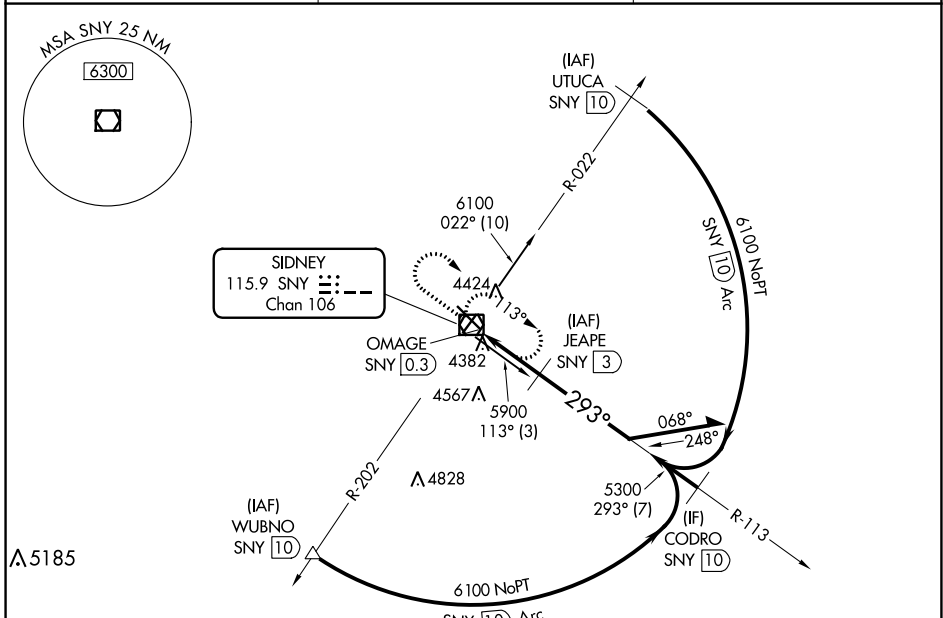
VOR/DME RWY 31

SIDNEY MUNI/LLOYD W CARR FLD (SNY)

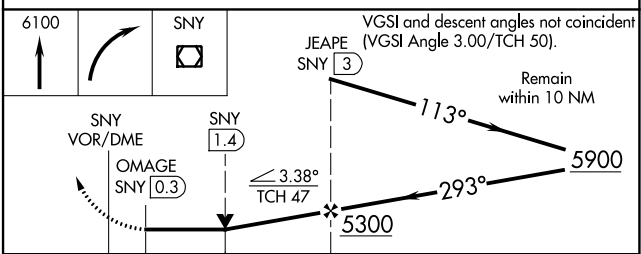
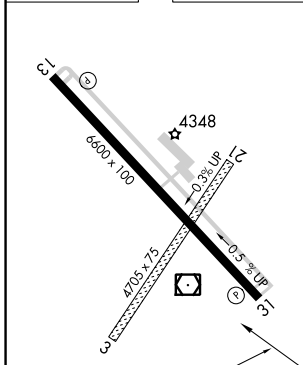
⚠ When local altimeter setting not received, use Kimball altimeter setting: increase all MDAs 160 feet and visibility Cats C and D ½ SM. VDP NA when using Kimball altimeter setting.

MISSED APPROACH: Climb to 6100 then right turn direct SNY VOR/DME and hold.

ASOS 125.775	DENVER CENTER 118.475 225.4	UNICOM 122.8 (CTAF) 0
------------------------	---------------------------------------	---------------------------------



ELEV 4313	TDZE 4290
-----------	-----------



CATEGORY	A	B	C	D
S-31	4680-1	390 (400-1)		4680-1¼ 390 (400-1¼)
CIRCLING	4760-1 447 (500-1)	4780-1 467 (500-1)	4920-1¾ 607 (700-1¾)	4960-2 647 (700-2)

SIDNEY, NEBRASKA
Amdt 5C 25MAR21

41°06'N-102°59'W

SIDNEY MUNI/LLOYD W CARR FLD (SNY)
VOR/DME RWY 31

NC-2, 30 DEC 2021 to 27 JAN 2022

NC-2, 30 DEC 2021 to 27 JAN 2022