

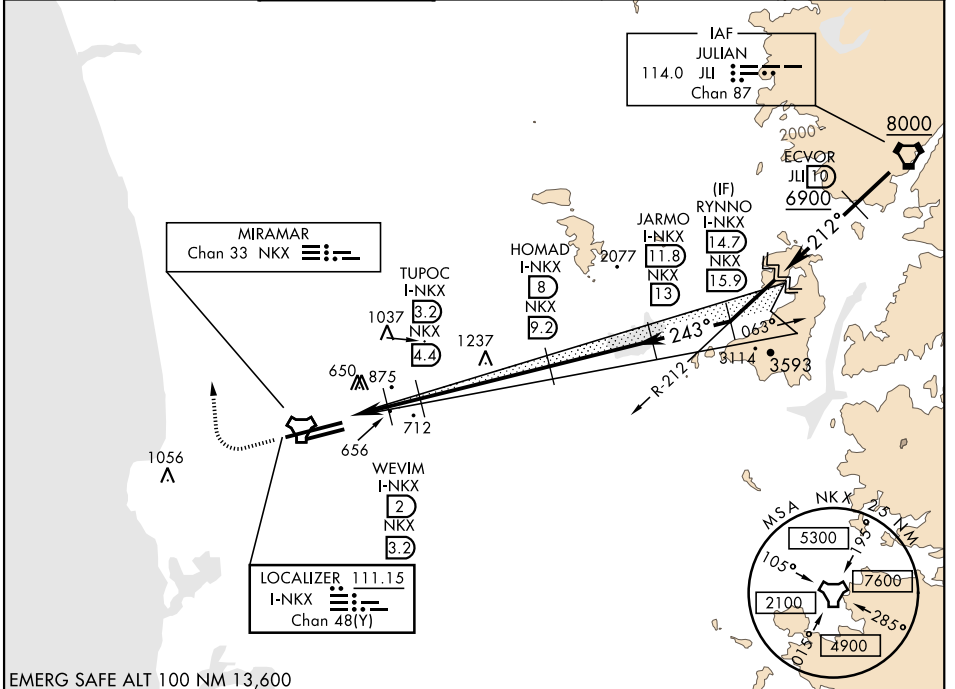
SAN DIEGO, CALIFORNIA

ILS or LOC/DME RWY 24R

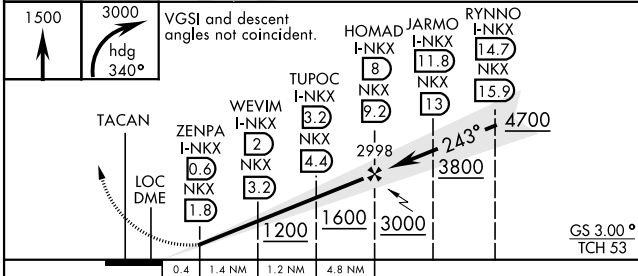
LOC/DME I-NKX 111.15 Chan 48 (Y)	APCH CRS 243°	Rwy Ldg 8001	24L 24R 12,000
		TDZE 477	475
		Arpt Elev 477	477

AL-903 [USN] MIRAMAR MCAS (JOE FOSS FLD) (KNKX)

RADAR required.				MISSED APPROACH: Climb to 1500, then climbing right turn to 3000 via heading 340°. Expect radar vectors.	
* When ALS inop, increase vis to 3/4 mile. ** When ALS inop, increase CAT AB vis to 1 mile, CAT CDE vis to 1 1/2 miles. *** CAT E circling not authorized S of Rwy 6R-24L.		ATIS ★ 133.475 352.0		SOCIAL APP CON 132.2 269.1	FOSS TOWER ★ 135.2 298.925
		GND CON 128.625 307.325	CLNC DEL 125.975 254.325	LA CENTER 291.7	ASR/ PAR

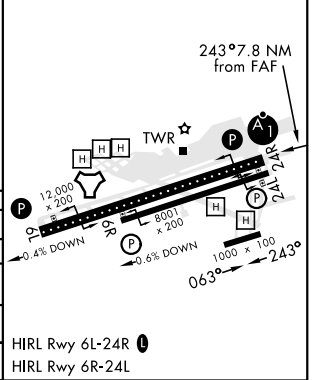


EMERG SAFE ALT 100 NM 13,600



ELEV 477	TDZE 24L 477
	TDZE 24R 475

	0.4	1.4 NM	1.2 NM	4.8 NM	
CATEGORY	A	B	C	D	E
S-ILS 24R*	675 - 1/2		200	(200-1/2)	
S-LOC/DME 24R**	920 - 1/2	445 (500-1/2)	920 - 7/8	445 (500-7/8)	
SIDESTEP 24L	920-1	443 (500-1)	920-1 3/8	443 (500-1 3/8)	
CIRCLING***	940-1 463 (500-1)	960-1 483 (500-1)	960-1 1/2 483 (500-1 1/2)	1180-2 1/4 703 (800-2 1/4)	1360-3 883 (900-3)



SAN DIEGO, CALIFORNIA 32°52'N-117°09'W MIRAMAR MCAS (JOE FOSS FLD) (KNKX)

Amtd 4 02DEC21

ILS or LOC/DME RWY 24R

SW-3, 30 DEC 2021 to 27 JAN 2022

SW-3, 30 DEC 2021 to 27 JAN 2022