

LAKEE-THREE DEPARTURE (LAKEE3 • LAKEE)

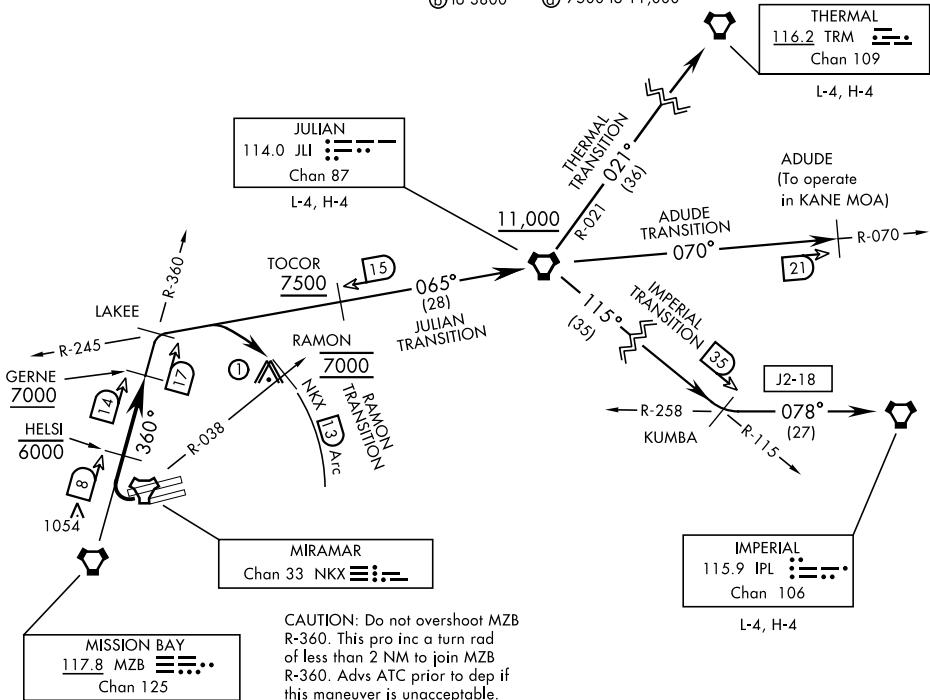
SAN DIEGO, CALIFORNIA

ATIS ★ 133.475 352.0  
 CLNC DEL  
 125.975 254.325  
 GND CON  
 128.625 307.325  
 FOSS TOWER ★  
 135.2 298.925  
 SOCAL DEP CON  
 132.2 269.1 E

AL-903 [USN]

Rwy	Knots	60	120	180	240	300	360
* 24L/R ⓐ	V/V(fpm)	260	520	780	1040	1300	1560
** 24L/R ⓑ	V/V(fpm)	280	560	840	1120	1400	1680
† 24L/R ⓐ	V/V(fpm)	678	1356	2034	2712	3390	4068
† 24L/R ⓐ	V/V(fpm)	235	470	705	940	1175	1410

\* Military Minimum \*\* Civil Minimum † ATC Climb Rate  
 ⓐ to 3600 ⓐ to 7000  
 ⓑ to 3800 ⓓ 7500 to 11,000



① 3018' Twr 12.5 NM from DER.

EMERG SAFE ALT 100 NM 13,600

DEPARTURE ROUTE DESCRIPTION

TAKE-OFF RWY 24L/R: Turn right to intercept and proceed via MZB VORTAC R-360 to LAKEE INT. Cross HELSI at or below 6000. Cross GERNE at or above 7000. Thence...

ADUDE TRANSITION (LAKEE3 • ADUDE): Via JLI VORTAC R-245 to JLI. Then via JLI R-070 to ADUDE. Cross TOCOR at or above 7500. Cross JLI VORTAC at or above 11,000. (To operate in KANE MOA.)

IMPERIAL TRANSITION (LAKEE3 • IPL): Via JLI VORTAC R-245 to JLI. Then via JLI R-115 to KUMBA INT, then via IPL VORTAC R-258 to IPL. Cross TOCOR at or above 7500. Cross JLI VORTAC at or above 11,000.

(Continued on next page)

LAKEE-THREE DEPARTURE (LAKEE3 • LAKEE)

Orig 135EP18

SAN DIEGO, CALIFORNIA  
 MIRAMAR MCAS (JOE FOSS FLD) (KNKX)

SW-3, 30 DEC 2021 to 27 JAN 2022

SW-3, 30 DEC 2021 to 27 JAN 2022