

RNAV (GPS) RWY 24R

WAAS CH 61450 W24B	APCH CRS 243°	Rwy Idg 12,000 TDZE 475 Arpt Elev 477
--------------------------	------------------	---

AL-903 [UN]

MIRAMAR MCAS (JOE FOSS FLD) (KNKX)

RNP APCH

▼ * When ALS inop, increase vis to 3/4 mile.
 ** When ALS inop, increase vis to 3/4 mile.
 *** When ALS inop, increase CAT AB vis to 1 mile,
 CAT CD vis to 1 1/4 miles.

ALSF-1

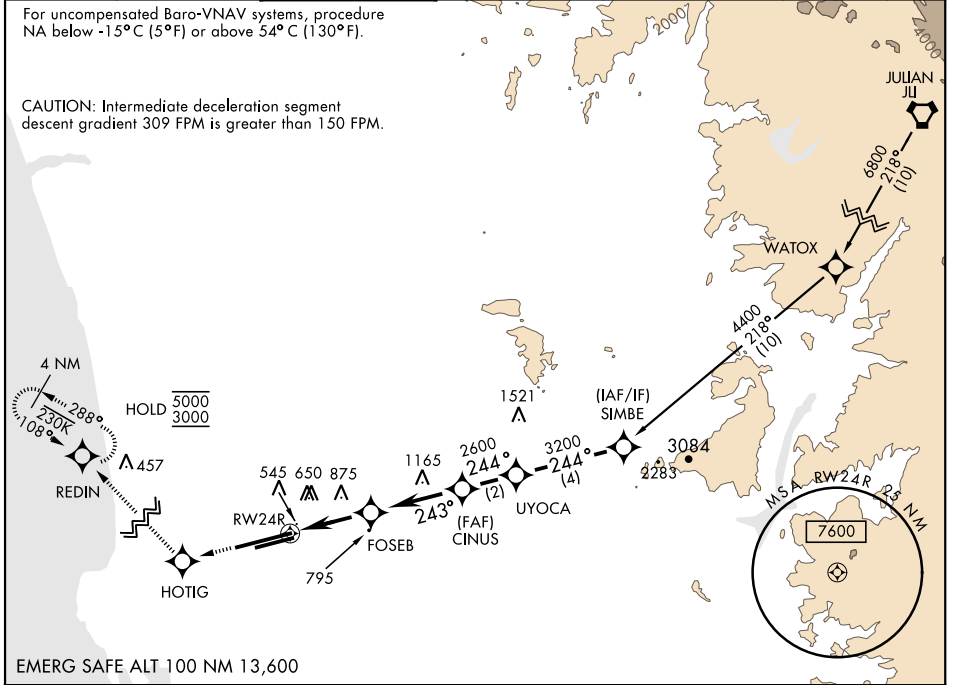


MISSED APPROACH: Climb to 3000 direct HOTIG, 288° track to REDIN and hold.

ATIS ★ 352.0 133.475	SOCAL APP CON 132.2 269.1	FOSS TOWER ★ 135.2 298.925	GND CON 128.625 307.325	CLNC DEL 125.975 254.325	LA CENTER 291.7	ASR/ PAR
----------------------------	---------------------------------	----------------------------------	-------------------------------	--------------------------------	--------------------	-------------

For uncompensated Baro-VNAV systems, procedure NA below -15°C (5°F) or above 54°C (130°F).

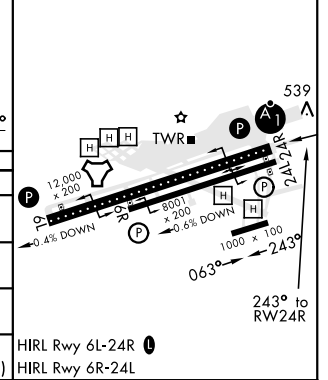
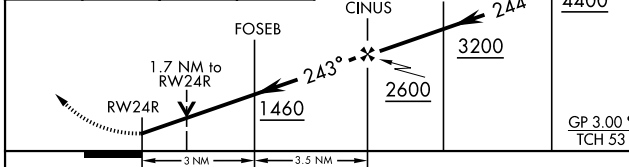
CAUTION: Intermediate deceleration segment descent gradient 309 FPM is greater than 150 FPM.



EMERG SAFE ALT 100 NM 13,600

3000	HOTIG	REDIN	VGSI and RNAV glidepath not coincident (VGSI Angle 3.00/TCH 57).
↑	◆	tr 288°	SIMBE

ELEV 477	TDZE 475
----------	----------



RNAV (GPS) RWY 24R

SW-3, 30 DEC 2021 to 27 JAN 2022

SW-3, 30 DEC 2021 to 27 JAN 2022