

| | | |
|--|------------------------|---|
| VORTAC HBR 111.8 Chan 55 | APP CRS 354° | Rwy Idg TDZE 1561 Apt Elev 1563 |
|--|------------------------|---|

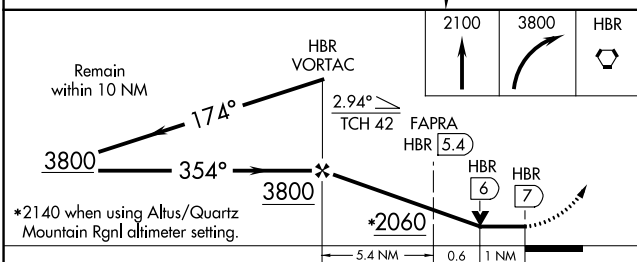
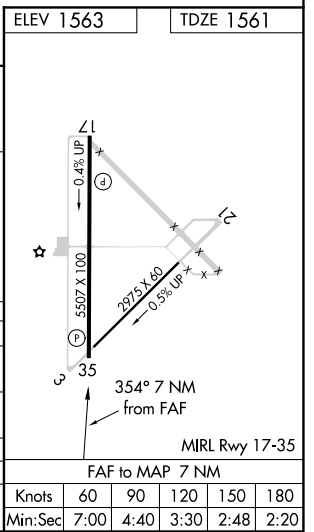
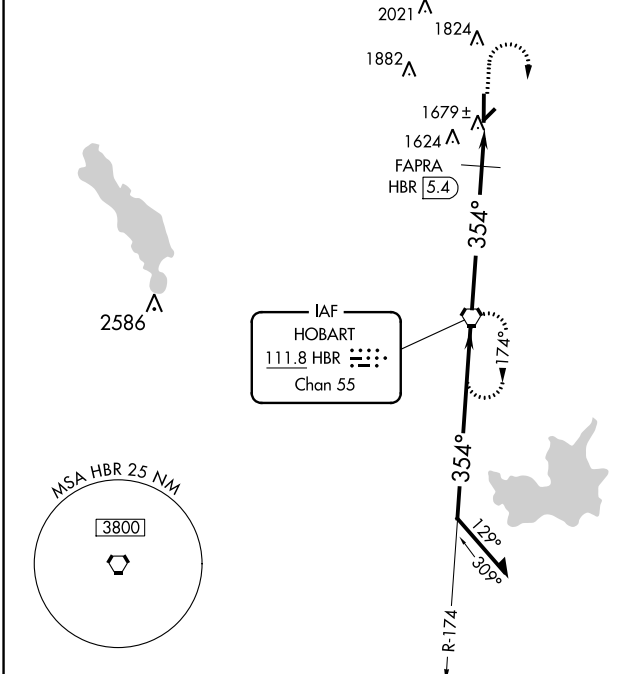
VOR RWY 35

HOBART RGNL (HBR)

⚠ When local altimeter setting not received, use Altus/Quartz Mountain Rgnl altimeter setting and increase all MDAs 80 feet, increase S-35 Cats C/D and Circling Cat C visibility ¼ SM, increase FAPRA fix minimums S-35 Cats C/D and Circling Cat C visibility ¼ SM. VDP NA when using Altus/Quartz Mountain Rgnl altimeter setting.

MISSED APPROACH: Climb to 2100, then climbing right turn to 3800 direct HBR VORTAC and hold.

| | | |
|------------------------|---------------------------------------|-------------------------------|
| ASOS 133.325 | ALTUS APP CON ★ 125.1 353.7 | UNICOM 122.8 (CTAF) |
|------------------------|---------------------------------------|-------------------------------|



| CATEGORY | A | B | C | D |
|--------------------|-----------------------|-----------------------|-------------------------|-------------------------|
| S-35 | 2060-1 | 499 (500-1) | 2060-1¼ 499 (500-1¼) | 2060-1½ 499 (500-1½) |
| CIRCLING | 2060-1 | 497 (500-1) | 2320-2¼ 757 (800-2¼) | 2460-3 897 (900-3) |
| FAPRA FIX MINIMUMS | | | | |
| S-35 | 1980-1 | 419 (500-1) | 1980-1¼ | 419 (500-1¼) |
| CIRCLING | 1980-1 417 (500-1) | 2020-1 457 (500-1) | 2320-2¼ 757 (800-2¼) | 2460-3 897 (900-3) |

| | | | | | |
|---------|------|------|------|------|------|
| Knots | 60 | 90 | 120 | 150 | 180 |
| Min:Sec | 7:00 | 4:40 | 3:30 | 2:48 | 2:20 |

SC-1, 30 DEC 2021 to 27 JAN 2022

SC-1, 30 DEC 2021 to 27 JAN 2022