

WAAS CH <b>72919</b> <b>W14A</b>	APP CRS <b>145°</b>	Rwy Idg TDZE Apt Elev	<b>6306</b> <b>2119</b> <b>2143</b>
--	------------------------	-----------------------------	---

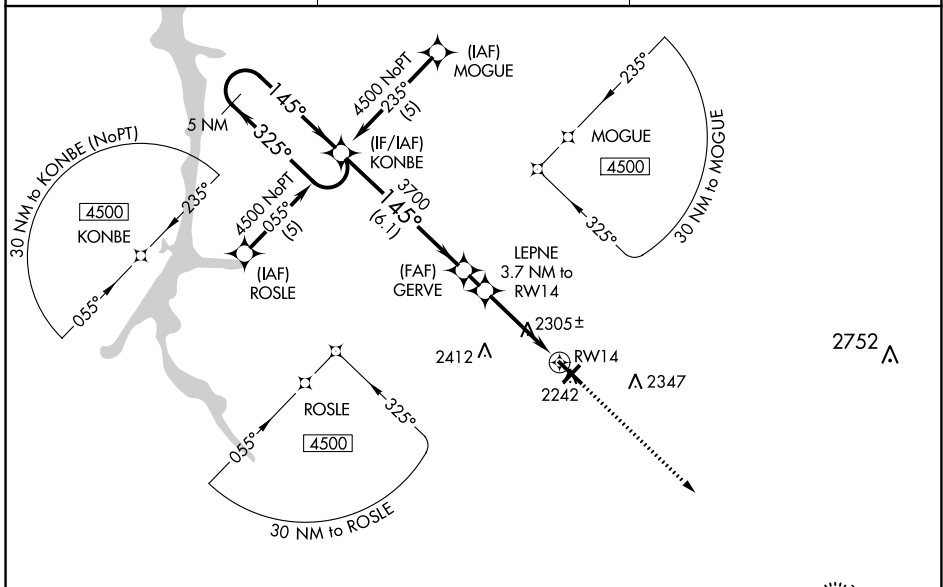
# RNAV (GPS) RWY 14

BRADFORD RGNL (BFD)

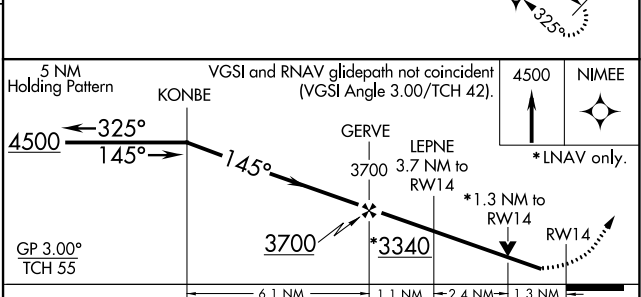
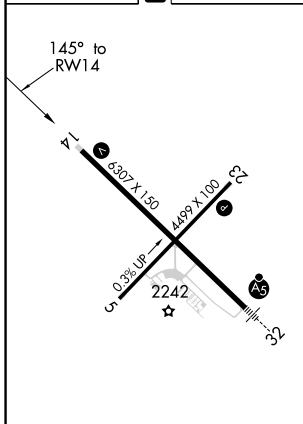
**⚠** For uncompensated Baro-VNAV systems, LNAV/VNAV NA below -19°C (-2°F) or above 53°C (129°F). Baro-VNAV and VDP NA when using St. Marys altimeter setting. DME/DME RNP-0.3 NA. Helicopter visibility reduction below 3/4 SM NA. When local altimeter setting not received, use St. Marys altimeter setting: increase LPV DA to 2454 feet and all visibilities 1/2 SM; increase LNAV/VNAV DA to 2602 feet and all visibilities 1/4 SM; increase all MDAs 100 feet and Circling Cat C visibility 1/2 SM, and LNAV Cats C and D and Circling Cat D 1/4 SM.

**⚠** MISSED APPROACH: Climb to 4500 direct NIMEE and hold.

ASOS <b>133.825</b>	CLEVELAND CENTER <b>124.325 353.85</b>	UNICOM <b>123.075 (CTAF) 0</b>
------------------------	---	-----------------------------------



ELEV 2143	<b>D</b>	TDZE 2119
-----------	----------	-----------



CATEGORY	A	B	C	D
LPV DA		2369-1	250 (300-1)	
LNAV/VNAV DA		2517-1 <sup>3</sup> / <sub>8</sub>	398 (400-1 <sup>3</sup> / <sub>8</sub> )	
LNAV MDA	2560-1	441 (500-1)	2560-1 <sup>3</sup> / <sub>8</sub>	441 (500-1 <sup>3</sup> / <sub>8</sub> )
CIRCLING	2620-1	477 (500-1)	2720-1 <sup>1</sup> / <sub>2</sub> 577 (600-1 <sup>1</sup> / <sub>2</sub> )	2760-2 617 (700-2)

MIRL Rwy 5-23 **0**  
HIRL Rwy 14-32 **0**  
REIL Rwy 5, 14 and 23 **0**

NE-4, 30 DEC 2021 to 27 JAN 2022

NE-4, 30 DEC 2021 to 27 JAN 2022