

WAAS CH <b>87019</b> <b>W32A</b>	APP CRS <b>325°</b>	Rwy Idg TDZE Apt Elev	<b>6306</b> <b>2120</b> <b>2143</b>
--	------------------------	-----------------------------	---

# RNAV (GPS) RWY 32

BRADFORD RGNL (BFD)

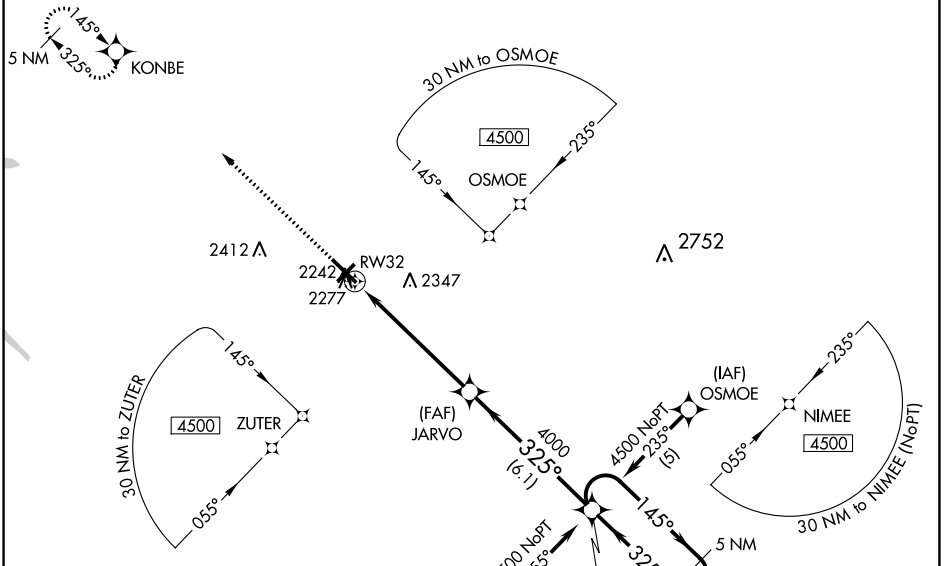
**⚠** For uncompensated Baro-VNAV systems, LNAV/VNAV NA below -19°C (-2°F) or above 54°C (130°F). Baro-VNAV and VDP NA when using St. Marys altimeter setting. DME/DME RNP-0.3 NA. Inop table does not apply to LPV and LNAV Cats A/B. For inop MALS, increase LNAV/VNAV all Cats visibility to 1 1/8 mile and LNAV Cats C/D visibility to 1 1/4 mile. When local altimeter setting not received, use St. Marys altimeter setting: increase LPV DA to 2455 feet; increase LNAV/VNAV DA to 2685 feet and all visibilities 1/8 SM; increase all MDAs 100 feet and Circling Cat C visibility 1/2 SM and Cat D 1/4 SM. For inop MALS, when using St. Marys altimeter setting, increase LPV all Cats visibility to 1 1/8 mile.

MALS



MISSED APPROACH:  
Climb to 4500 direct  
KONBE and hold.

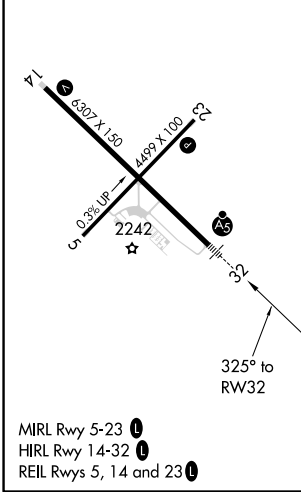
ASOS <b>133.825</b>	CLEVELAND CENTER <b>124.325 353.85</b>	UNICOM <b>123.075 (CTAF) 0</b>
------------------------	---	-----------------------------------



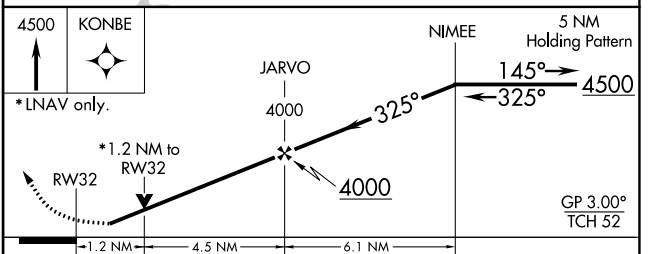
NE-4, 30 DEC 2021 to 27 JAN 2022

NE-4, 30 DEC 2021 to 27 JAN 2022

ELEV 2143	<b>D</b>	TDZE 2120
-----------	----------	-----------



- MIRL Rwy 5-23 **0**
- HIRL Rwy 14-32 **0**
- REIL Rwy 5, 14 and 23 **0**



CATEGORY	A	B	C	D
LPV DA		2370-1	250 (300-1)	
LNAV/VNAV DA		2600-1 1/8	480 (500-1 1/8)	
LNAV MDA		2540-1	420 (400-1)	
CIRCLING	2620-1	477 (500-1)	2720-1 1/2 577 (600-1 1/2)	2760-2 617 (700-2)