

LOC/DME I-CLL 110.55 Chan 42(Y)	APP CRS 346°	Rwy Idg 7000 TDZE 311 Apt Elev 321
--	------------------------	---

ILS or LOC RWY 35

EASTERWOOD FLD (CLL)

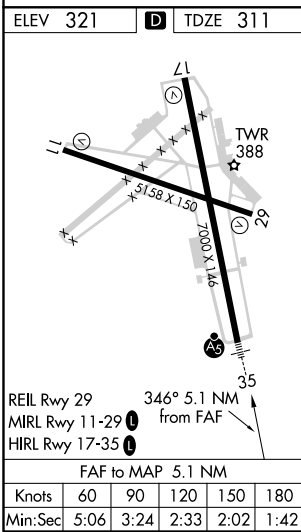
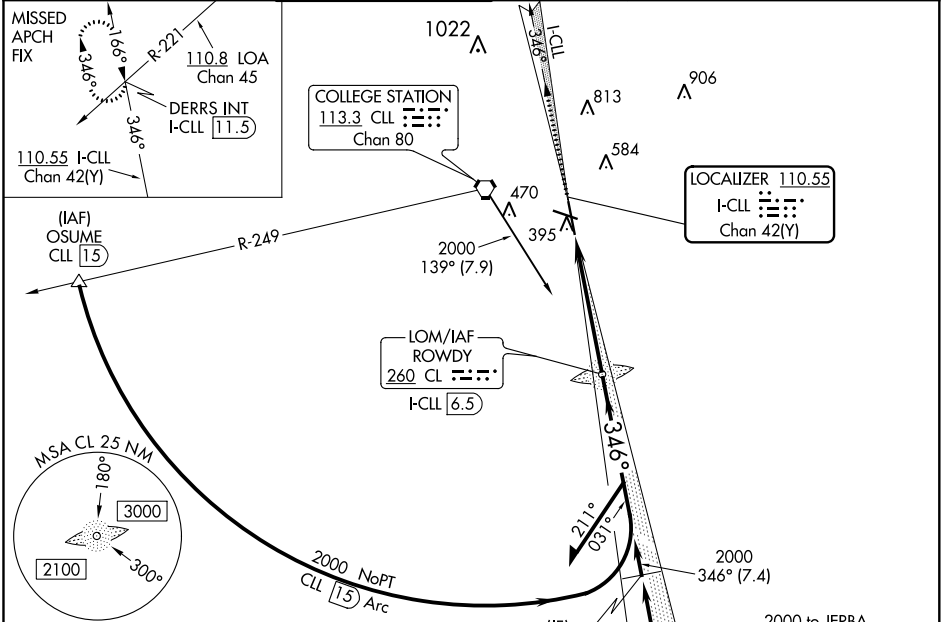
ADF or DME required for procedure entry. ADF or DME required for LOC only.

For inop ALS, increase S-ILS 35 Cat E visibility to 3/4 SM and S-LOC 35 Cat E visibility to 1 1/8 SM. ILS glideslope unusable for coupled approaches below 1050 feet MSL.

MALSR

MISSED APPROACH: Climb to 2500 on I-CLL north course to DERRS INT/I-CLL 11.5 DME and hold.

ATIS 126.85	HOUSTON APP CON 134.3 360.85	EASTERWOOD TOWER * 118.5 (CTAF) 284.7	GND CON 128.7 284.7	CLNC DEL 128.7	CLNC DEL 120.4 (when twr closed)	UNICOM 122.95
-----------------------	--	--	-------------------------------	--------------------------	---	-------------------------



Procedure NA for arrival at COUTH on V306 eastbound. 2500 I-CLL N crs DERRS INT *LOC only.	CL LOM I-CLL 6.5 Remain within 15 NM 1968 166° 2000 346° 2000 GS 2.90° TCH 57 Use I-CLL DME when on localizer course.				
	CATEGORY S-ILS 35 S-LOC 35	A	B	C	D
	760-1/2	449 (500-1/2)	511-1/2	760-7/8	449 (500-7/8)
C CIRCLING	860-1 539 (600-1)	880-1 559 (600-1)	1000-2 679 (700-2)	1180-2 3/4 859 (900-2 3/4)	1180-3 859 (900-3)

SC-5, 30 DEC 2021 to 27 JAN 2022

SC-5, 30 DEC 2021 to 27 JAN 2022