

LOC/DME I-CLL 110.55 Chan 42 (Y)	APP CRS 166°	Rwy Idg 7000 TDZE 321 Apt Elev 321
--	------------------------	---

LOC BC RWY 17

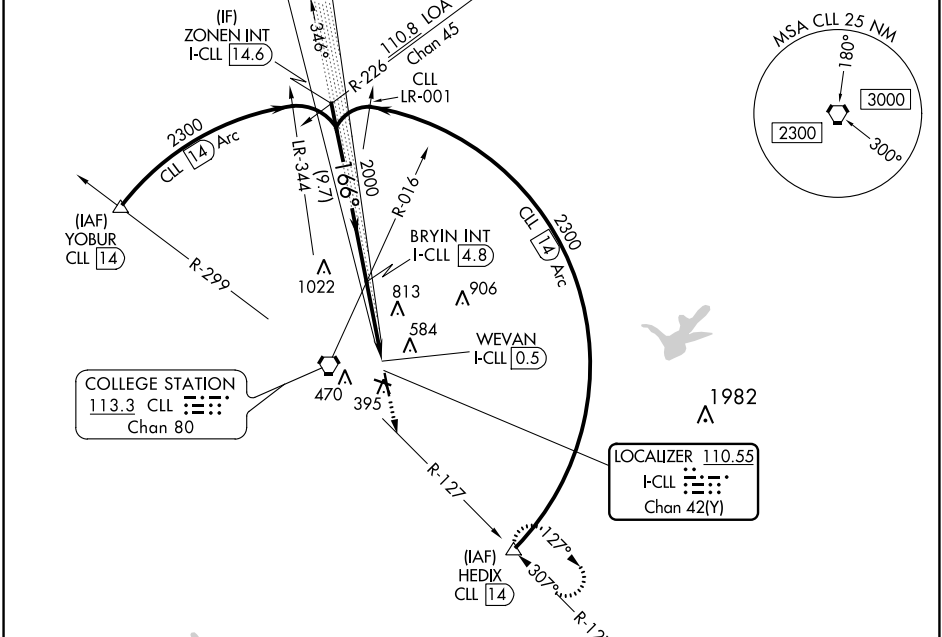
EASTERWOOD FLD (CLL)

DME required.

⚠ Rwy 17 helicopter visibility reduction below ¾ SM NA.

MISSED APPROACH: Climb to 2000 on heading 166° and CLL R-127 to HEDIX/CLL 14 DME and hold.

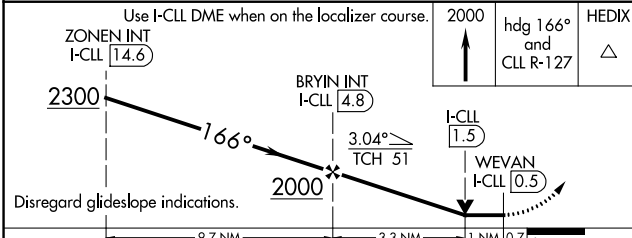
ATIS 126.85	HOUSTON APP CON 134.3 360.85	EASTERWOOD TOWER ★ 118.5 (CTAF) 284.7	GND CON 128.7 284.7	CLNC DEL 128.7	CLNC DEL 120.4 (when twr closed)	UNICOM 122.95
-----------------------	--	--	-------------------------------	--------------------------	---	-------------------------



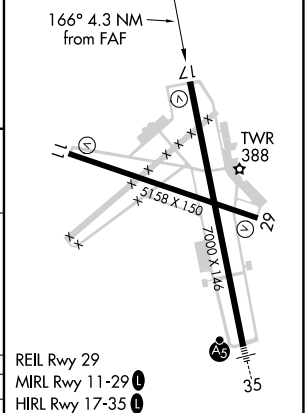
SC-5, 30 DEC 2021 to 27 JAN 2022

SC-5, 30 DEC 2021 to 27 JAN 2022

BACK COURSE



ELEV 321	D TDZE 321
----------	-------------------



CATEGORY	A	B	C	D	E	
S-LOC 17	940-1	619 (700-1)	940-1¾	619 (700-1¾)		
C CIRCLING	940-1	619 (700-1)	1000-2 679 (700-2)	1180-2¾ 859 (900-2¾)	1180-3 859 (900-3)	
	Knots	60	90	120	150	180
	Min:Sec	4:18	2:52	2:09	1:43	1:26