

RNAV (GPS) RWY 11

EASTERWOOD FLD (CLL)

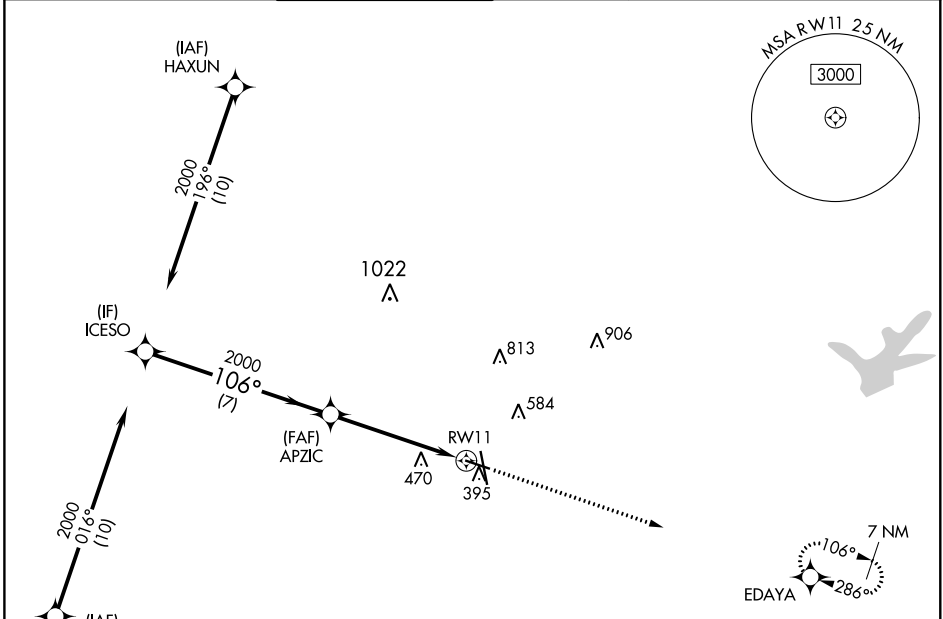
WAAS CH 65632	APP CRS 106°	Rwy Idg TDZE Apt Elev	5158 319 321
W11A			

RNP APCH.

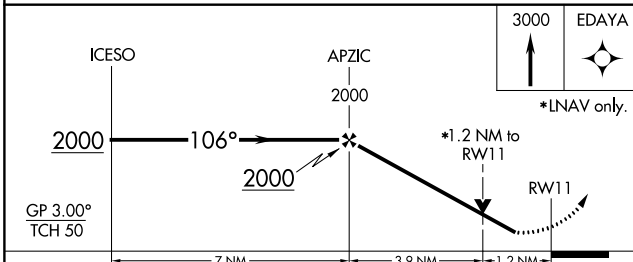
⚠ For uncompensated Baro-VNAV systems, LNAV/VNAV NA below -3°C or above 54°C. Rwy 11 helicopter visibility reduction below 3/4 SM NA.

MISSED APPROACH: Climb to 3000 direct EDAYA and hold.

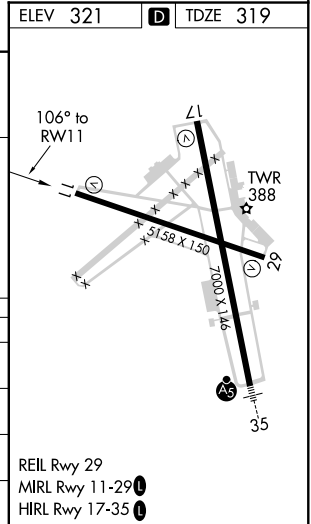
ATIS 126.85	HOUSTON APP CON 134.3 360.85	EASTERWOOD TOWER ★ 118.5 (CTAF) 0 284.7	GND CON 128.7 284.7	CLNC DEL 128.7	CLNC DEL 120.4 (when twr closed)	UNICOM 122.95
-----------------------	----------------------------------------	---------------------------------------------------	-------------------------------	--------------------------	-----------------------------------------------	-------------------------



ELEV 321	D TDZE 319
----------	-------------------



CATEGORY	A	B	C	D	E
LPV DA	569-3/4		250 (300-3/4)		
LNAV/VNAV DA	641-1		322 (400-1)		
LNAV MDA	740-1	421 (500-1)	740-1 1/4	421 (500-1 1/4)	
C CIRCLING	860-1 539 (600-1)	880-1 559 (600-1)	1000-2 679 (700-2)	1180-2 3/4 859 (900-2 3/4)	1180-3 859 (900-3)



SC-5, 30 DEC 2021 to 27 JAN 2022

SC-5, 30 DEC 2021 to 27 JAN 2022