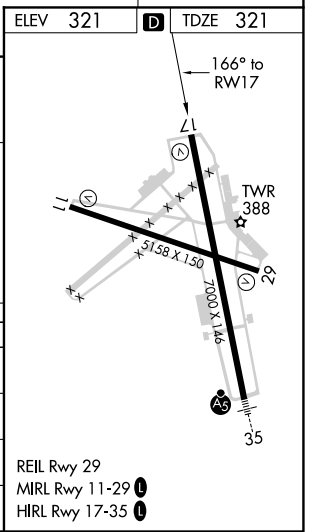
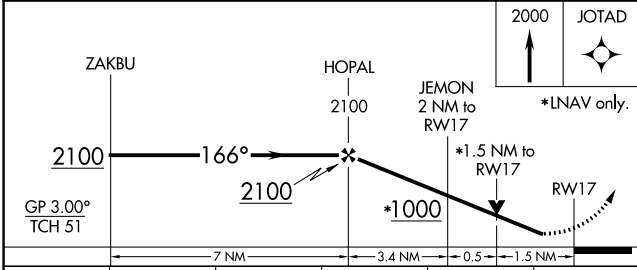
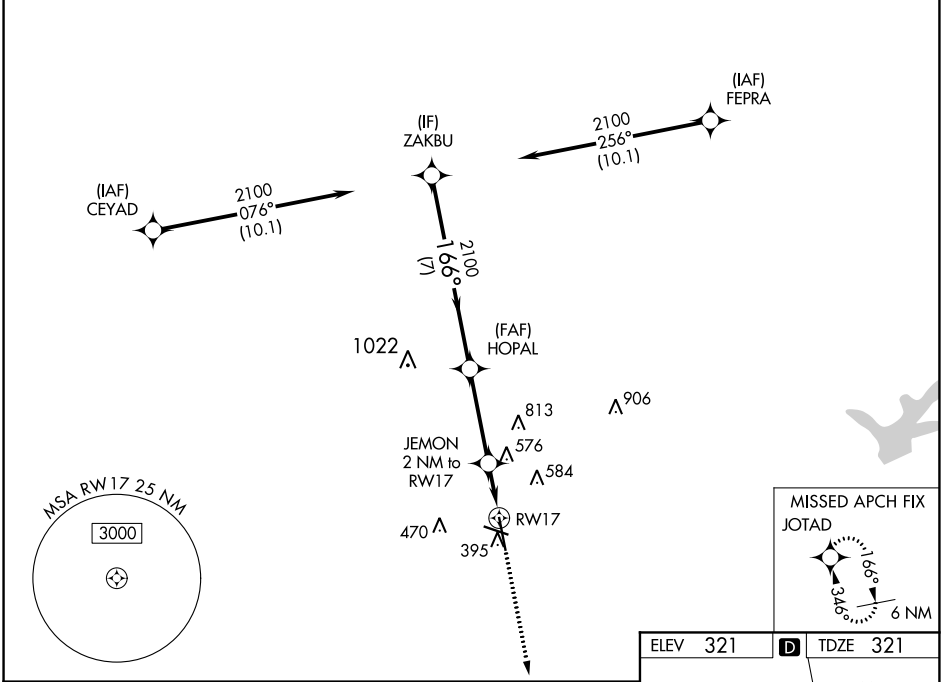


WAAS CH <b>78322</b> <b>W17A</b>	APP CRS <b>166°</b>	Rwy Idg TDZE Apt Elev	<b>7000</b> <b>321</b> <b>321</b>
--	------------------------	-----------------------------	---

# RNAV (GPS) RWY 17

EASTERWOOD FLD (CLL)

RNP APCH.		For uncompensated Baro-VNAV systems, LNAV/VNAV NA below -3°C or above 54°C. Rwy 17 helicopter visibility reduction below 3/4 SM NA.			MISSED APPROACH: Climb to 2000 direct JOTAD and hold.		
ATIS <b>126.85</b>	HOUSTON APP CON <b>134.3 360.85</b>	EASTERWOOD TOWER ★ <b>118.5 (CTAF) 0 284.7</b>	GND CON <b>128.7 284.7</b>	CLNC DEL <b>128.7</b>	CLNC DEL <b>120.4</b> (when twr closed)	UNICOM <b>122.95</b>	



CATEGORY	A	B	C	D	E
LPV DA	571-3/4		250 (300-3/4)		
LNAV/VNAV DA	637-1		316 (400-1)		
LNAV MDA	840-1	519 (600-1)	840-1 3/8	519 (600-1 3/8)	
CIRCLING	860-1 539 (600-1)	880-1 559 (600-1)	1000-2 679 (700-2)	1180-2 3/4 859 (900-2 3/4)	1180-3 859 (900-3)

SC-5, 30 DEC 2021 to 27 JAN 2022

SC-5, 30 DEC 2021 to 27 JAN 2022

REIL Rwy 29  
MIRL Rwy 11-29  
HIRL Rwy 17-35