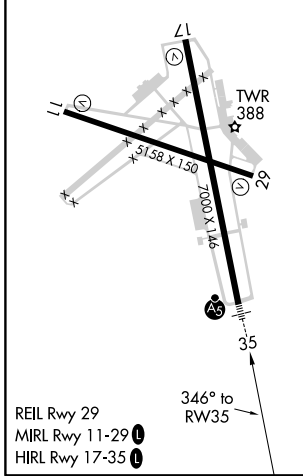
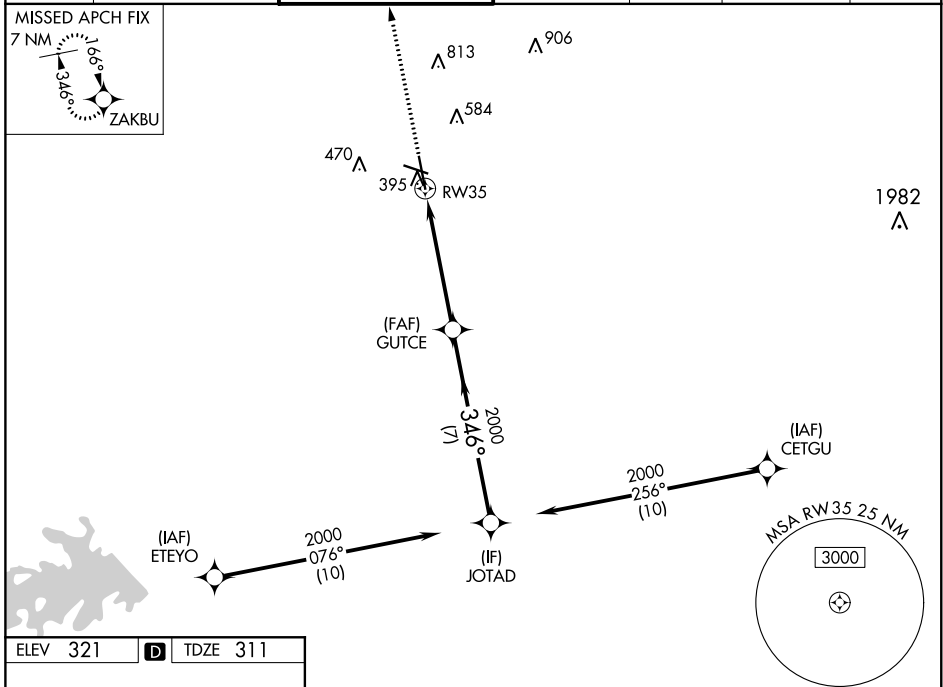


WAAS CH 63122 W35A	APP CRS 346°	Rwy Idg TDZE Apt Elev	7000 311 321
--	------------------------	-----------------------------	---

RNAV (GPS) RWY 35

EASTERWOOD FLD (CLL)

RNP APCH.		EASTERWOOD TOWER ★		GND CON	CLNC DEL	CLNC DEL	UNICOM
<p>▼ For uncompensated Baro-VNAV systems, LNAV/VNAV NA below -3°C or above 54°C. For inop ALS, increase LPV Cat E and LNAV/VNAV all Cats visibility to ¾ SM, increase LNAV Cat E visibility to 1¾ SM.</p>		<p>118.5 (CTAF) 0 284.7</p>		<p>128.7 284.7</p>	<p>128.7</p>	<p>120.4 (when twr closed)</p>	<p>122.95</p>
ATIS	HOUSTON APP CON						
126.85	134.3 360.85						



2100	ZAKBU					
*LNAV only.						
RW35		GUTCE 2000		JOTAD 2000		
1.3 NM		3.9 NM		7 NM		
1.3 NM to RW35		346°		2000		
GP 3.00° TCH 55						
CATEGORY	A	B	C	D	E	
LPV DA	511-½		200 (200-½)			
LNAV/VNAV DA	563-½		252 (300-½)			
LNAV MDA	760-½	449 (500-½)	760-⅞	449 (500-⅞)		
CIRCLING	860-1	880-1	1000-2	1180-2¾	1180-3	
	539 (600-1)	559 (600-1)	679 (700-2)	859 (900-2¾)	859 (900-3)	

SC-5, 30 DEC 2021 to 27 JAN 2022

SC-5, 30 DEC 2021 to 27 JAN 2022