

VORTAC CLL 113.3 Chan 80	APP CRS 280°	Rwy Idg 5158 TDZE 314 Apt Elev 321
--	------------------------	---

VOR RWY 29

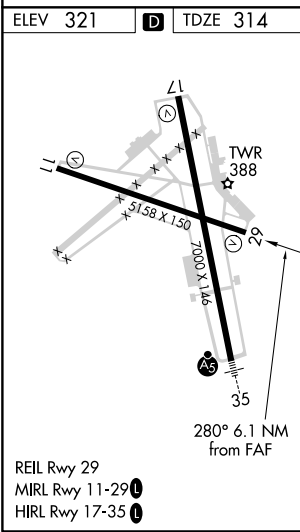
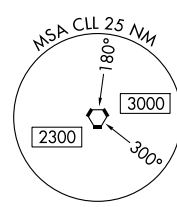
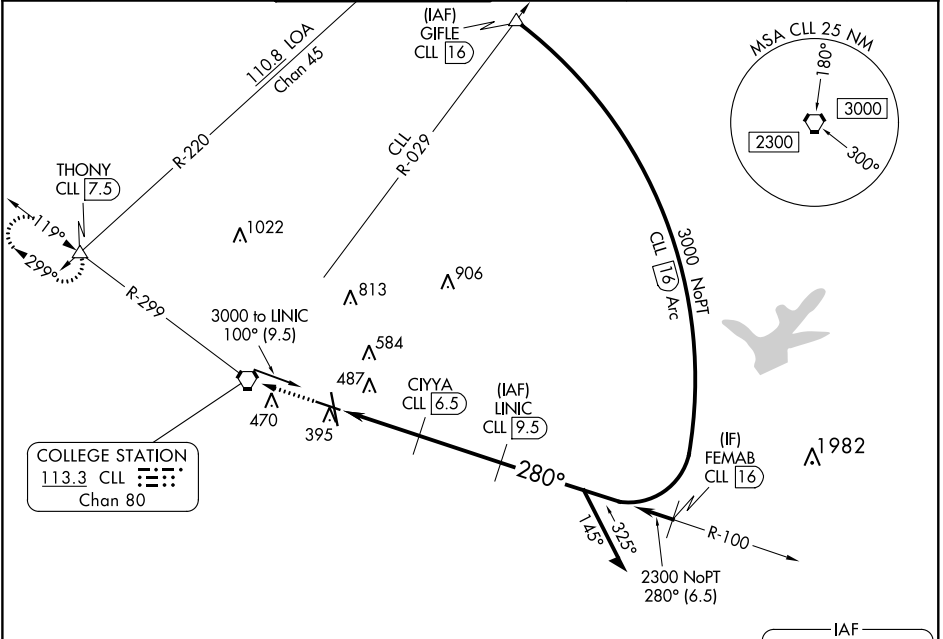
EASTERWOOD FLD (CLL)

DME required for procedure entry. DME required.

▼ Rwy 29 helicopter visibility reduction below 3/4 SM NA.
▲

MISSED APPROACH: Climb to 2500 direct CLL VORTAC then on CLL VORTAC R-299 to THONY INT/CLL 7.5 DME and hold.

ATIS 126.85	HOUSTON APP CON 134.3 360.85	EASTERWOOD TOWER ★ 118.5 (CTAF) 284.7	GND CON 128.7 284.7	CLNC DEL 128.7	CLNC DEL 120.4 (when twr closed)	UNICOM 122.95
-----------------------	--	---	-------------------------------	--------------------------	---	-------------------------



ELEV 321	D	TDZE 314		
2500	CLL	THONY	LINIC	Remain within 10 NM
↑	CLL R-299	△	CLL 9.5	
	CLL 3.5	CIYYA CLL 6.5	CLL 4.8	3000
			≤ 3.00° TCH 54	
	1.4 NM	1.7 NM	3 NM	
CATEGORY	A	B	C	D
S-29	800-1	486 (500-1)	800-1 3/8	486 (500-1 3/8)
C CIRCLING	860-1	880-1	1000-2	1180-2 3/4
	539 (600-1)	559 (600-1)	679 (700-2)	859 (900-2 3/4)

SC-5, 30 DEC 2021 to 27 JAN 2022

SC-5, 30 DEC 2021 to 27 JAN 2022