

HI-TACAN RWY 23L/R

TACAN NTU Chan 113	APCH CRS 244°	Rwy ldg 23L 12,008 23R 8000 TDZE 23L 21 23R 21 Arpt Elev 22
-----------------------	------------------	---

JAL-934 [USN]

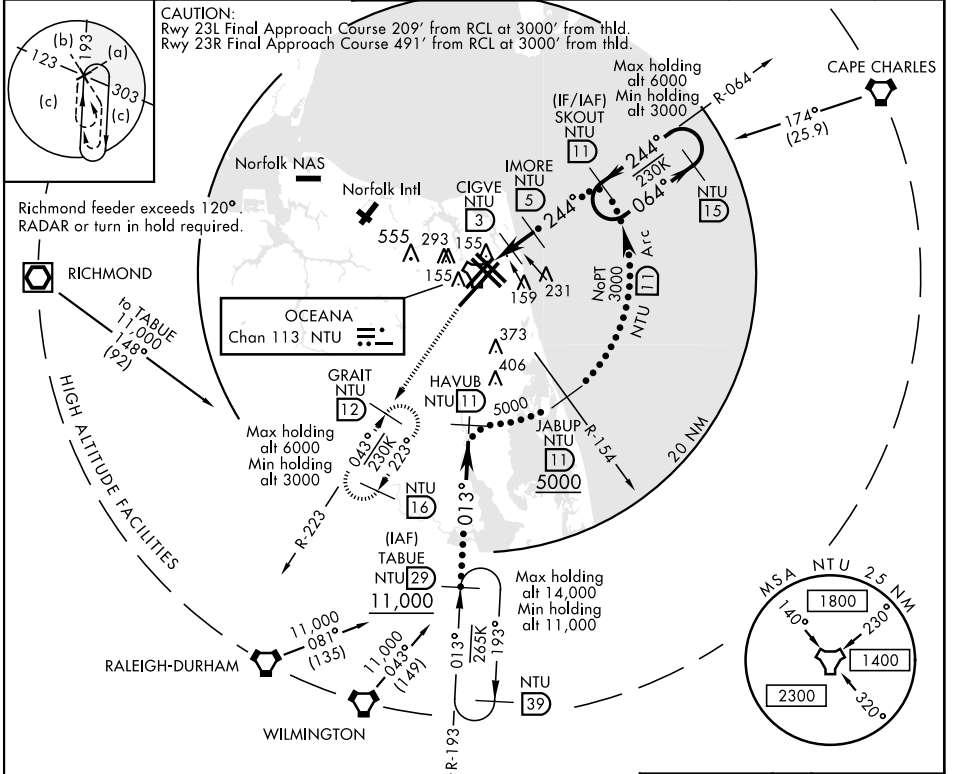
OCEANA NAS (APOLLO SOUCEK FIELD) (KNTU)

ALS-1

 MISSED APPROACH: Climb to 3000 via R-064 to NTU TACAN, and via R-223 to GRAIT and hold.

* When ALS inop, increase CAT CDE vis to 1½ miles

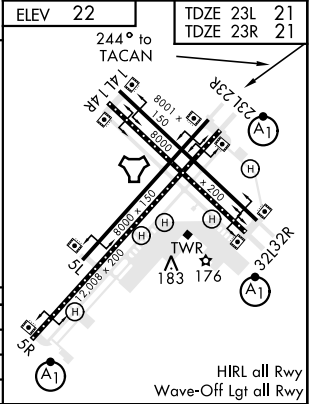
ATIS 317.6	APP CON 123.9 266.8	OCEANA TOWER 127.075 360.2	GND CON 119.6 336.4	CLNC DEL 254.4	ASR/ PAR
---------------	------------------------	-------------------------------	------------------------	-------------------	-------------



EMERG SAFE ALT 100 NM 4100

NTU R-064	NTU R-223
-----------	-----------

CATEGORY	C	D	E
S-23L*	460-¾	439 (500-¾)	
S-23R	460-1½	439 (500-1½)	
C CIRCLING	640-1¾ 618 (700-1¾)	640-2 618 (700-2)	900-3 878 (900-3)



HI-TACAN RWY 23L/R

NE-3, 30 DEC 2021 to 27 JAN 2022

NE-3, 30 DEC 2021 to 27 JAN 2022