

# HI-TACAN RWY 32L/R

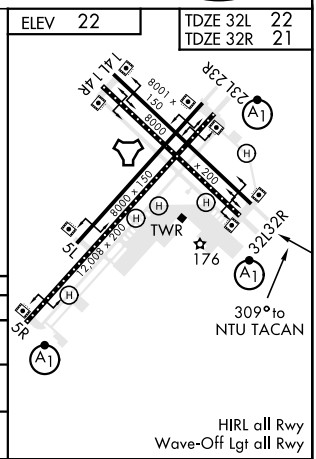
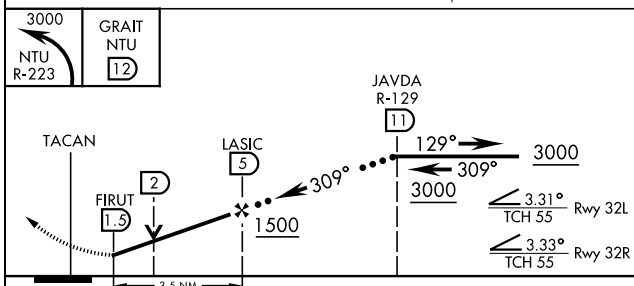
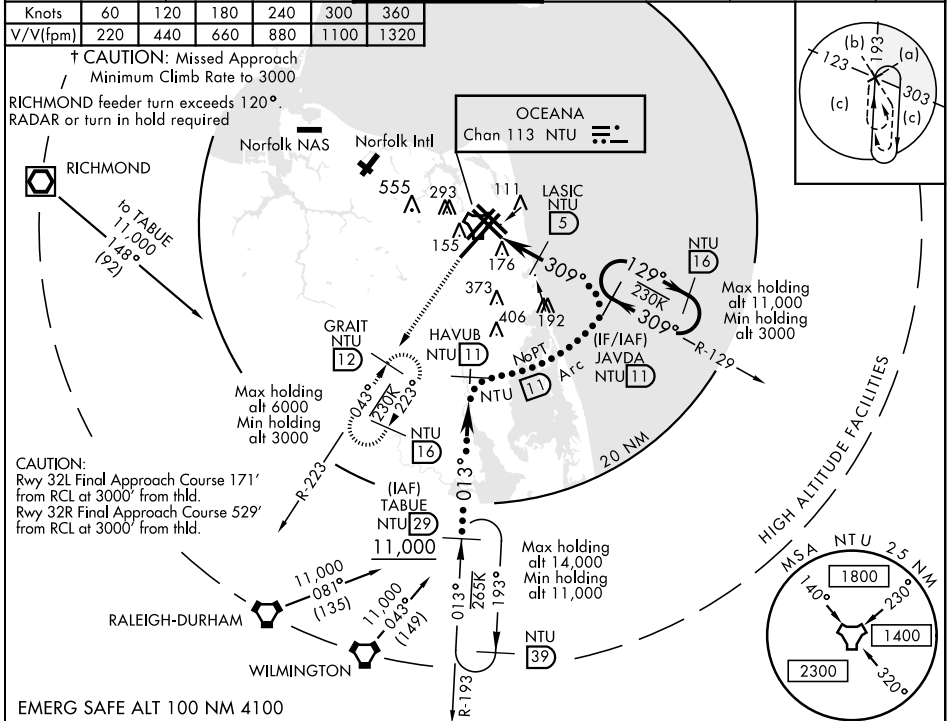
JAL-934 [USN]

OCEANA NAS (APOLLO SOUCEK FIELD) (KNTU)

TACAN NTU Chan 113	APCH CRS 309°	Rwy ldg TDZE 32L 8000 32R 8001	Rwy ldg TDZE 32L 22 32R 21
		Arprt Elev 22	

\* When ALS inop, increase CAT CDE vis to 1¼ miles.  
 † MISSED APPROACH: Climbing left turn to 3000, intercept NTU TACAN R-223 to GRAIT and hold.

ATIS 317.6	APP CON 123.9 266.8	OCEANA TOWER 127.075 360.2	GND CON 119.6 336.4	CLNC DEL 254.4	ASR/PAR
------------	---------------------	----------------------------	---------------------	----------------	---------



CATEGORY	C	D	E
S-32L *	460-¾	438 (500-¾)	
S-32R	460-1¼	439 (500-1¼)	
CIRCLING	640-1¾	640-2	900-3
	618 (700-1¾)	618 (700-2)	878 (900-3)

# HI-TACAN RWY 32L/R

NE-3, 30 DEC 2021 to 27 JAN 2022

NE-3, 30 DEC 2021 to 27 JAN 2022

HIRL all Rwy  
Wave-Off Lgt all Rwy