

# HI-TACAN RWY 5R

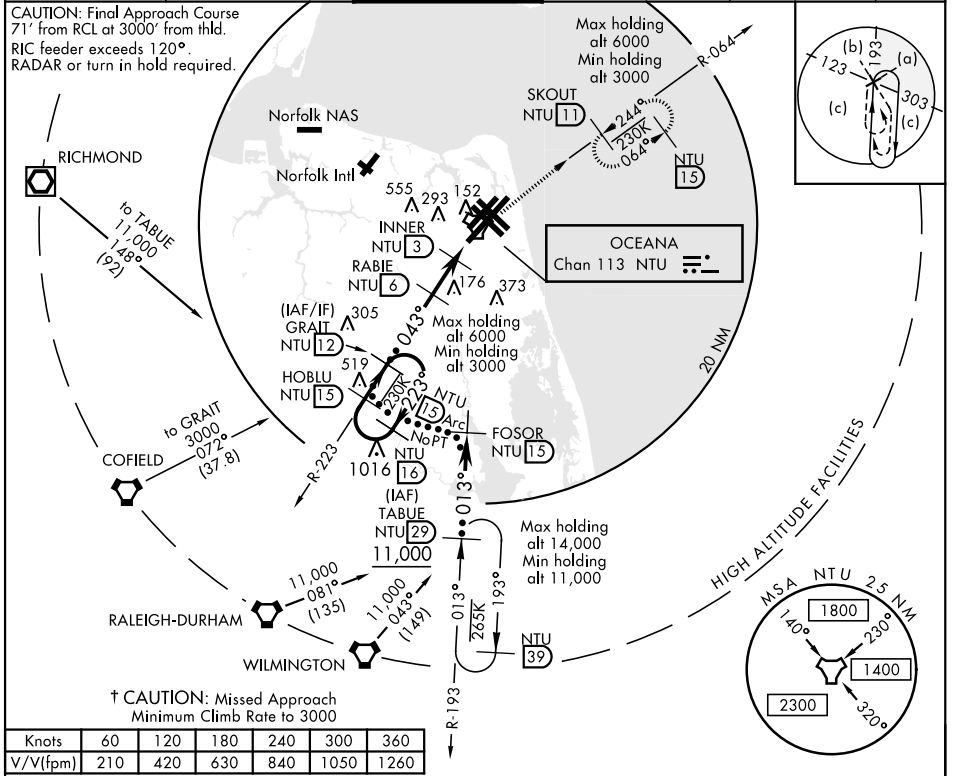
TACAN NTU Chan <b>113</b>	APCH CRS <b>043°</b>	Rwy Idg <b>12,008</b> TDZE <b>19</b> Arprt Elev <b>22</b>	JAL-934 [USN] OCEANA NAS (APOLLO SOUCEK FIELD) (KNTU)
------------------------------	-------------------------	---	---

ALSF-1
 


 † MISSED APPROACH: Climb to 3000 via R-223 to NTU TACAN, and via R-064 to SKOUT and hold.

\* When ALS inop, increase CAT CDE vis to 1¼ miles.

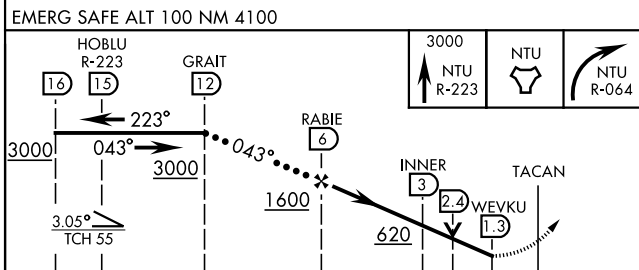
ATIS <b>317.6</b>	APP CON <b>123.9 266.8</b>	OCEANA TOWER <b>127.075 360.2</b>	GND CON <b>119.6 336.4</b>	CLNC DEL <b>254.4</b>	ASR/ PAR
----------------------	-------------------------------	--------------------------------------	-------------------------------	--------------------------	-------------



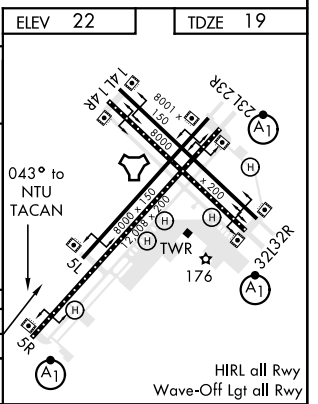
† CAUTION: Missed Approach  
Minimum Climb Rate to 3000

Knots	60	120	180	240	300	360
V/V(fpm)	210	420	630	840	1050	1260

ATC Minimum Climb Rate



CATEGORY	C	D	E
S-5R *	440-¾	421 (500-¾)	
CIRCLING	640-1¾ 618 (700-1¾)	640-2 618 (700-2)	900-3 878 (900-3)



# HI-TACAN RWY 5R

NE-3, 30 DEC 2021 to 27 JAN 2022

NE-3, 30 DEC 2021 to 27 JAN 2022