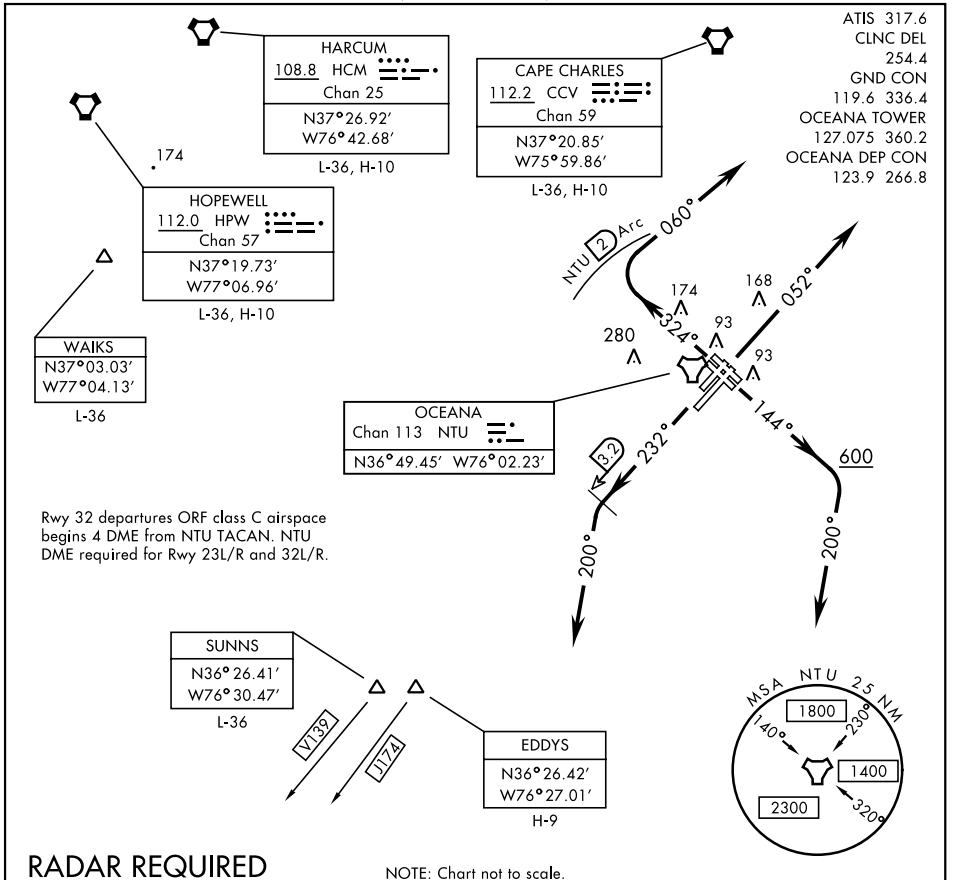


OCEANA-FOUR DEPARTURE (NTU4•NTU)

OCEANA NAS (APOLLO SOUCEK FIELD) (KNTU)

AL-934 [USN]

VIRGINIA BEACH, VIRGINIA



NE-3, 30 DEC 2021 to 27 JAN 2022

NE-3, 30 DEC 2021 to 27 JAN 2022

RADAR REQUIRED

NOTE: Chart not to scale.

DEPARTURE ROUTE DESCRIPTION

- TAKE-OFF RWY 5L/R:** Climb heading 052°. Thence...
- TAKE-OFF RWY 14L/R:** Climb heading 144° to 600 then climbing right turn heading 200°. Thence...
- TAKE-OFF RWY 23L/R:** Climb heading 232°, crossing NTU TACAN 3.2 DME, turn left heading 200°. Thence...
- TAKE-OFF RWY 32L/R:** Climb heading 324° to assigned altitude, turn right heading 060° within NTU TACAN 2 DME. Thence...
...Maintain 4000 or assigned lower altitude.

- CAPE CHARLES TRANSITION (NTU4.CCV):** Via RADAR vectors to CCV VORTAC.
- EDDYS TRANSITION (NTU4.EDDYS):** Via RADAR vectors to EDDYS.
- HARCUM TRANSITION (NTU4.HCM):** Via RADAR vectors to HCM VORTAC.
- HOPEWELL TRANSITION (NTU4.HPW):** Via RADAR vectors to HPW VORTAC.
(At or below 17,000 only).
- SUNNS TRANSITION (NTU4.SUNNS):** Via RADAR vectors to SUNNS.
(At or below 17,000 only).
- WAIKS TRANSITION (NTU4.WAIKS):** Via RADAR vectors to WAIKS.

OCEANA-FOUR DEPARTURE (NTU4•NTU)

VIRGINIA BEACH, VIRGINIA