


# RNAV (GPS) RWY 32L/R

APCH CRS 325°	Rwy Idg	32L	32R
	TDZE	8000	8001
	Arpt Elev	22	21

AL-934 (USN) OCEANA NAS (APOLLO SOUCEK FLD) (KNTU)

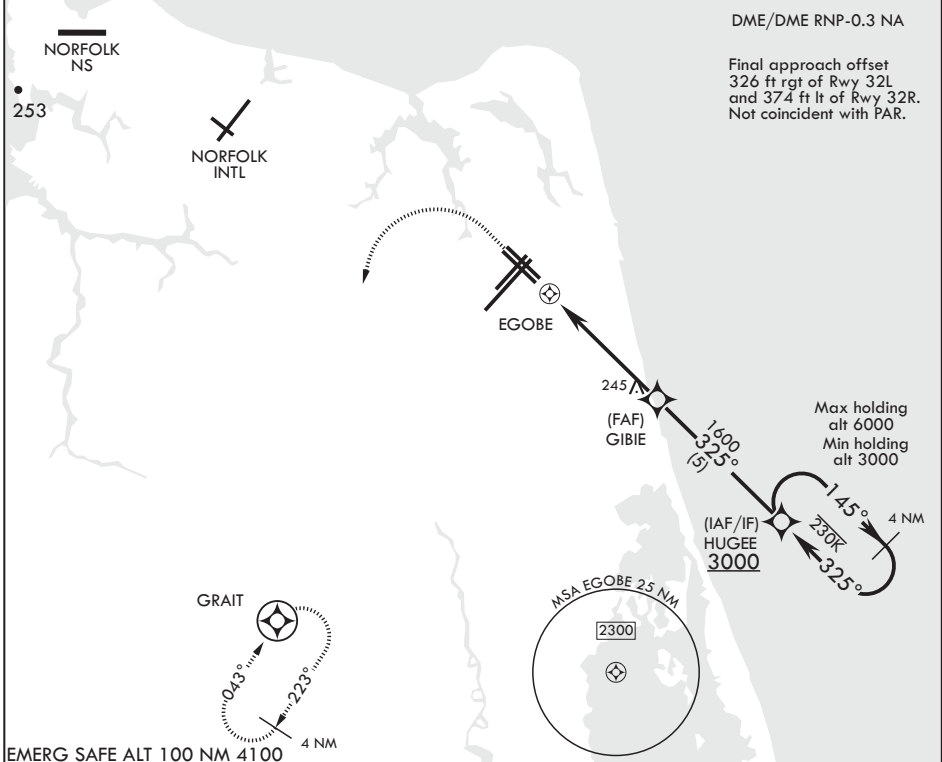
▼ \* When ALS inop increase CAT AB vis to 1 mile, CAT CD vis to 1 1/8 miles.

Rwy 32L ALSF-1



MISSED APPROACH: Climbing 1100 then climbing left turn to 3000 direct GRAIT and hold.

ATIS 317.6	OCEANA APP CON 123.9 266.8	TOWER 127.075 360.2	GND CON 119.6 336.4	CLNC DEL 254.4	ASR/PAR
---------------	-------------------------------	------------------------	------------------------	-------------------	---------

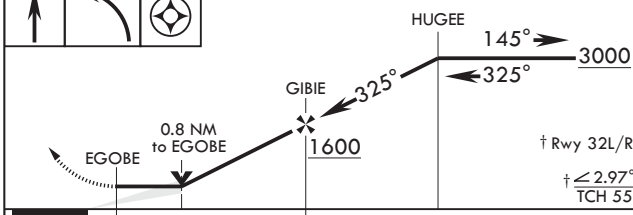


EMERG SAFE ALT 100 NM 4100

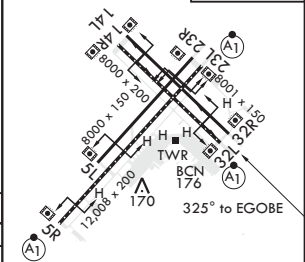
1100 ↑

3000 ↙

GRAIT



ELEV 22	TDZE 32L 22
	TDZE 32R 21



CATEGORY	A	B	C	D
LNAV MDA	480-1	459 (500-1)	480-1 3/8	459 (500-1 3/8)
LNAV MDA*	480-1/2	458 (500-1/2)	480-7/8	458 (500-7/8)
CIRCLING	500-1	478 (500-1)	640-1 3/4 618 (700-1 3/4)	640-2 618 (700-2)

HIRL all Rwys  
Wave-Off Lights all Rwys

# RNAV (GPS) RWY 32L/R

NE-3, 30 DEC 2021 to 27 JAN 2022

NE-3, 30 DEC 2021 to 27 JAN 2022