

VIRGINIA BEACH, VIRGINIA

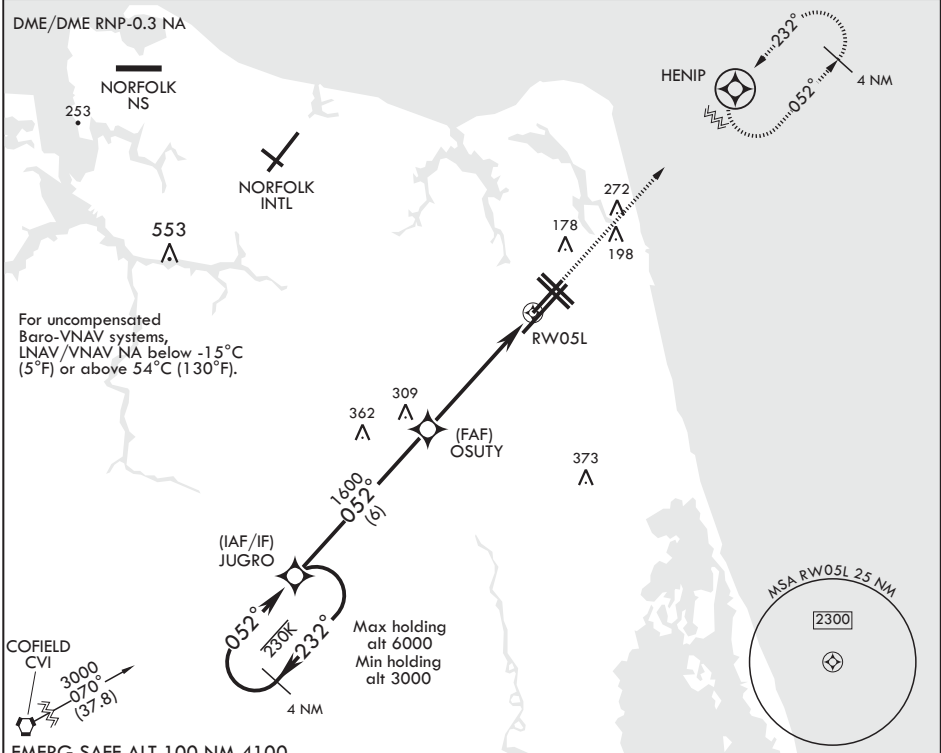
# RNAV (GPS) RWY 5L

WAAS CH <b>63997</b> W05A	APCH CRS <b>052°</b>	Rwy ldg TDZE Arprt Elev	<b>8000</b> <b>20</b> <b>22</b>
---------------------------------	-------------------------	-------------------------------	---------------------------------------

AL-934 (USN) OCEANA NAS (APOLLO SOUCEK FLD) (KNTU)

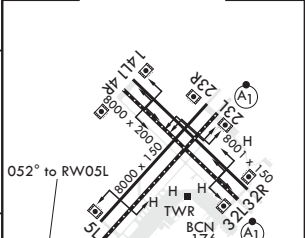
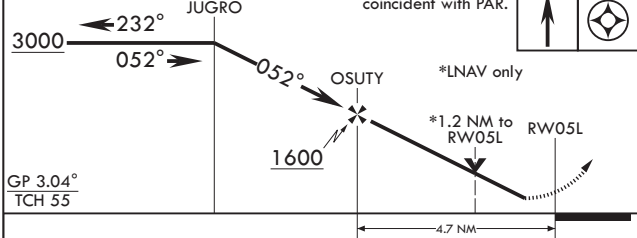
**▽** MISSED APPROACH: Climb to 3000 direct HENIP and hold. Continue climb in hold to 3000.

ATIS <b>317.6</b>	OCEANA APP CON <b>123.9 266.8</b>	TOWER <b>127.075 360.2</b>	GND CON <b>119.6 336.4</b>	CLNC DEL <b>254.4</b>	ASR/PAR
----------------------	--------------------------------------	-------------------------------	-------------------------------	--------------------------	---------



EMERG SAFE ALT 100 NM 4100

Glidepath not coincident with PAR.	3000	HENIP	ELEV 22	TDZE 20
------------------------------------	------	-------	---------	---------



CATEGORY	A	B	C	D
LPV DA	220-3/4	200	200	(200-3/4)
LNAV/VNAV DA	314-7/8 294 (300-7/8)	325-1 305 (400-1)	333-1 313 (400-1)	344-1 324 (400-1)
LNAV MDA	460-1 440 (500-1)	440 (500-1)	460-1 1/4 440 (500-1 1/4)	440 (500-1 1/4)
◻ CIRCLING	500-1 478 (500-1)	478 (500-1)	640-1 1/4 618 (700-1 1/4)	640-2 618 (700-2)

HIRL all Rws  
Wave-Off Lights all Rws

VIRGINIA BEACH, VIRGINIA

36°49'N - 76°02'W OCEANA NAS (APOLLO SOUCEK FLD) (KNTU)

Amdt 3 10OCT19

# RNAV (GPS) RWY 5L

NE-3, 30 DEC 2021 to 27 JAN 2022

NE-3, 30 DEC 2021 to 27 JAN 2022