

VIRGINIA BEACH, VIRGINIA

RNAV (GPS) RWY 5R

WAAS CH 69870 W05B	APCH CRS 052°	Rwy ldg TDZE Arprt Elev	12,008 19 22
---------------------------------	-------------------------	-------------------------------	---

AL-934 (USN) OCEANA NAS (APOLLO SOUCEK FLD) (KNTU)

▽ * When ALS inop, increase CAT AB vis to 1 mile, CAT CD vis to 1 3/8 miles.

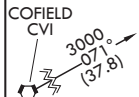
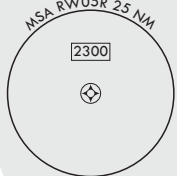
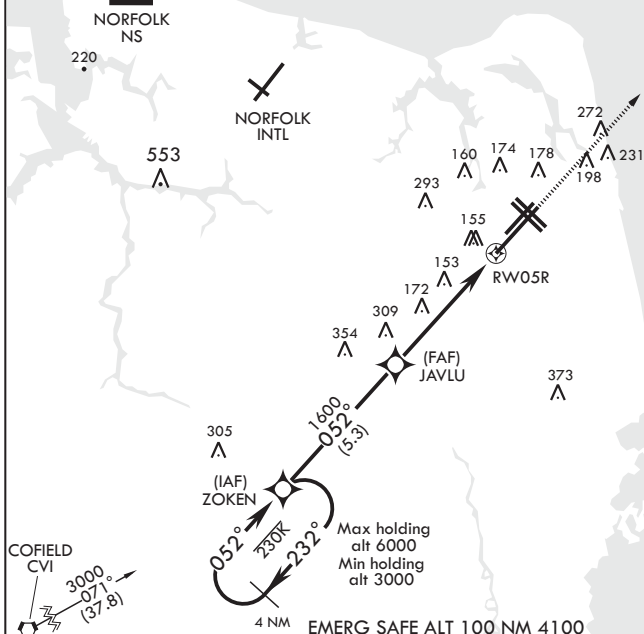


MISSED APPROACH: Climb to 3000 direct JAGNI and hold. Continue climb in hold to 3000.

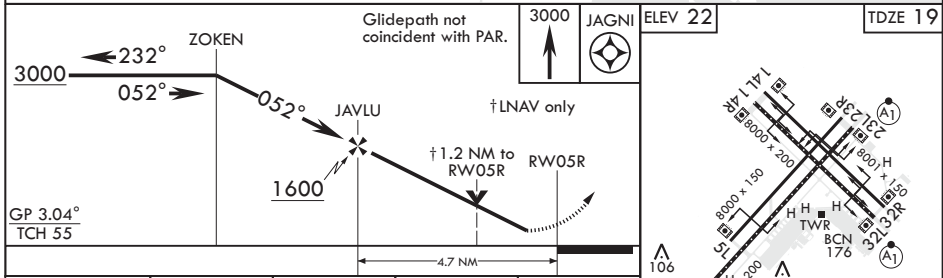
ATIS 317.6	OCEANA APP CON 123.9 266.8	TOWER 127.075 360.2	GND CON 119.6 336.4	CLNC DEL 254.4	ASR/PAR
----------------------	--------------------------------------	-------------------------------	-------------------------------	--------------------------	---------

DME/DME RNP-0.3 NA

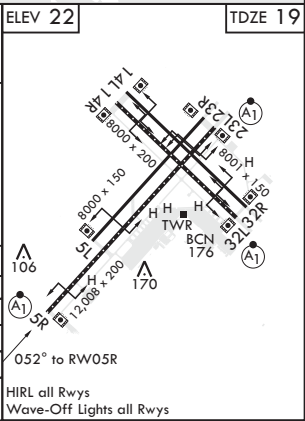
For uncompensated Baro-VNAV systems, LNAV/VNAV NA below -15°C (5°F) or above 54°C (130°F).



EMERG SAFE ALT 100 NM 4100



CATEGORY	A	B	C	D
LPV DA*	219-1/2	200	(200-1/2)	
LNAV/VNAV DA*	341-5/8	322	(400-5/8)	
LNAV MDA*	460-1/2 441 (500-1/2)	460-3/8 441 (500-3/8)	640-1 3/4 618 (700-1 3/4)	640-2 618 (700-2)
C CIRCLING	500-1 478 (500-1)			



VIRGINIA BEACH, VIRGINIA
Amdt 3 03JAN19

36°49'N - 76°02'W OCEANA NAS (APOLLO SOUCEK FLD) (KNTU)

RNAV (GPS) RWY 5R

NE-3, 30 DEC 2021 to 27 JAN 2022

NE-3, 30 DEC 2021 to 27 JAN 2022