

VIRGINIA BEACH, VIRGINIA

TACAN RWY 5R

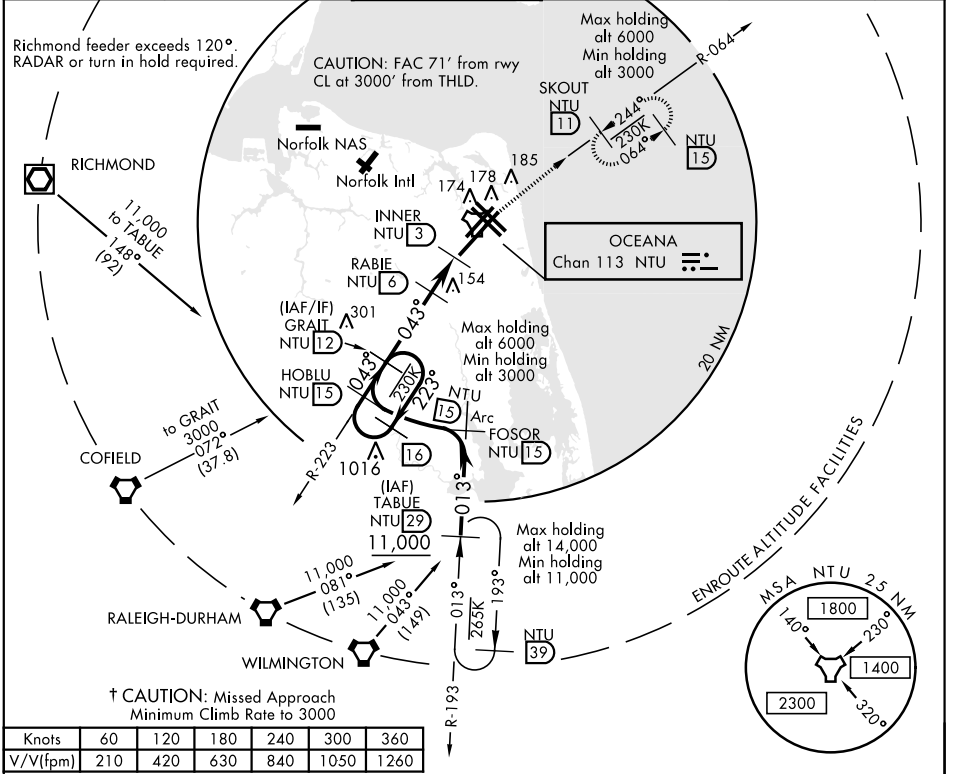
TACAN NTU Chan 113	APCH CRS 043°	Rwy Idg 12.008
		TDZE 19
		Arprt Elev 22

AL-934 [USN] OCEANA NAS (APOLLO SOUCEK FIELD) (KNTU)

▼ * When ALS inop, increase CAT AB vis to 1 mile, CAT CD vis to 1 1/4 miles.

 † MISSED APPROACH: Climb to 3000 via R-223 to NTU TACAN and via R-064 to SKOUT and hold.

ATIS 317.6	APP CON 123.9 266.8	OCEANA TOWER 127.075 360.2	GND CON 119.6 336.4	CLNC DEL 254.4	ASR/ PAR
---------------	------------------------	-------------------------------	------------------------	-------------------	-------------

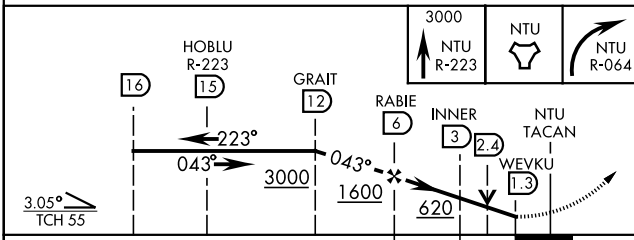


† CAUTION: Missed Approach Minimum Climb Rate to 3000

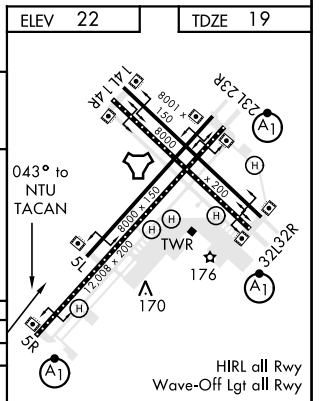
Knots	60	120	180	240	300	360
V/V(fpm)	210	420	630	840	1050	1260

ATC Minimum Climb Rate

EMERG SAFE ALT 100 NM 4100



CATEGORY	A	B	C	D
S-5R *	440-1/2	421 (500-1/2)	440-3/4	421 (500-3/4)
CIRCLING	500-1	478 (500-1)	640-1 1/4 618 (700-1/2)	640-2 618 (700-2)



VIRGINIA BEACH, VIRGINIA

36° 49' N-76° 02' W

OCEANA NAS (APOLLO SOUCEK FIELD) (KNTU)

Amtd 4 03JAN19

TACAN RWY 5R

NE-3, 30 DEC 2021 to 27 JAN 2022

NE-3, 30 DEC 2021 to 27 JAN 2022