

LOS ALAMITOS, CALIFORNIA

RNAV (GPS) RWY 22L

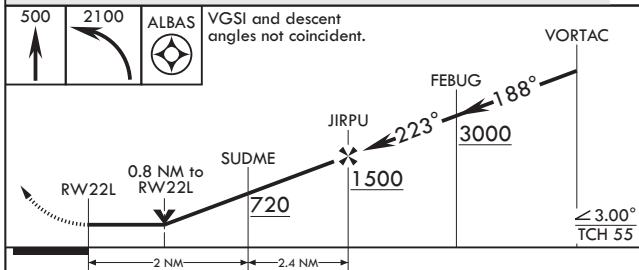
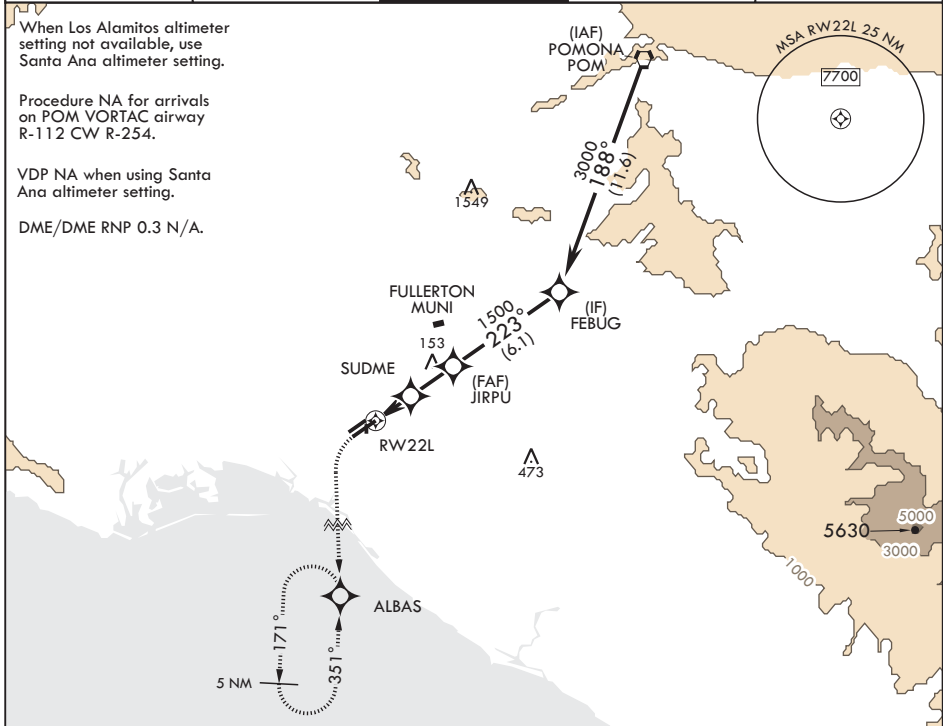
APCH CRS	Rwy Idg	8001
223°	TDZE	35
	Arprt Elev	35

AL-953 (USA)

LOS ALAMITOS AAF (KSLI)

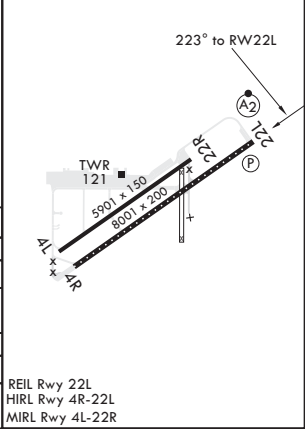
	* When ALS inop, increase CAT D vis to 1 mile.		MISSED APPROACH: Climb to 500 then climbing left turn to 2100 direct ALBAS and hold.
	** When ALS inop using SANTA ANA altimeter setting, increase CAT D vis to 1 1/8 mile.		
	*** Circling not authorized N of Rwy 4L-22R.		

ATIS*	SOCAL APP CON	TOWER*	GND CON	ASR/PAR
118.875 379.975	125.35 316.125	123.85 (CTAF) 251.15	126.95 257.95	



ELEV 35	TDZE 35
---------	---------

CATEGORY	A	B	C	D
LNAV MDA*	380-3/4			
CIRCLING***	440-1 405 (500-1)	500-1 465 (500-1)	560-1 1/2 525 (600-1 1/2)	680-2 645 (700-2)
SANTA ANA ALTIMETER SETTING MINIMUMS				
LNAV MDA**	420-3/4	385 (400-3/4)	420-7/8	385 (400-7/8)
CIRCLING***	480-1 445 (500-1)	540-1 505 (600-1)	600-1 1/2 565 (600-1 1/2)	720-2 685 (700-2)



REIL Rwy 22L
HIRL Rwy 4R-22L
MIRL Rwy 4L-22R

LOS ALAMITOS, CALIFORNIA
Amdt 1 07DEC17

33°47'N - 118°03'W

LOS ALAMITOS AAF (KSLI)

RNAV (GPS) RWY 22L

SW-3, 30 DEC 2021 to 27 JAN 2022

SW-3, 30 DEC 2021 to 27 JAN 2022