

VOR or TACAN RWY 22L

VORTAC SLI 115.7 Chan 104	APCH CRS 214°	Rwy ldg TDZE Arprt Elev 8001 35 35
---	-------------------------	--

AL-953 [USA]

LOS ALAMITOS AAF (KSLI)

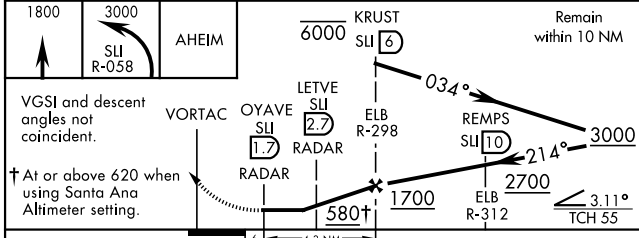
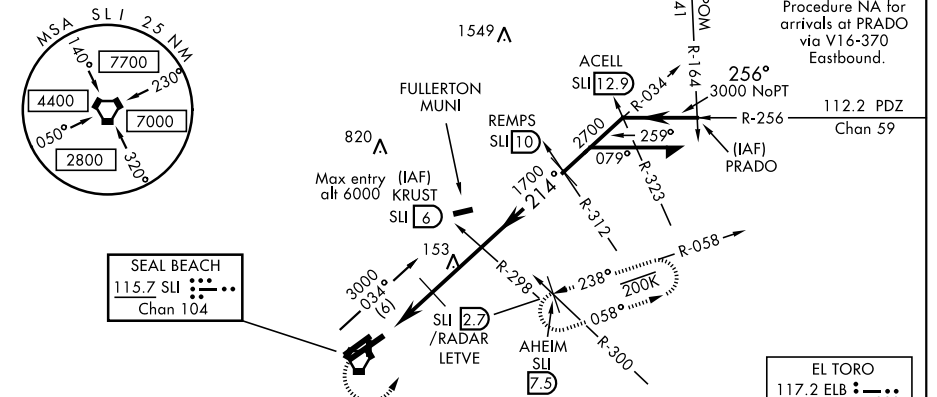
* When ALS inop, increase vis CAT D ¼ mile.
 ** Circling not authorized N of Rwy 4L-22R.

 SALSF

 MISSED APPROACH: Climb to 1800, then climbing left turn to 3000 via SLI VORTAC R-058 to AHEIM INT and hold.

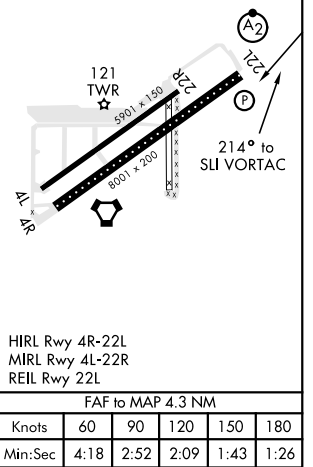
ATIS ★ 118.875 379.975	SOCAL APP CON 125.35 316.125	TOWER★ 123.85 251.15	GND CON 126.95 257.95	ASR/ PAR
----------------------------------	--	--------------------------------	---------------------------------	-------------

When Los Alamitos altimeter setting not available, use Santa Ana altimeter setting.



ELEV 35	TDZE 35
---------	---------

CATEGORY	A		B	C		D
S-22L *	440-¾	405 (500-¾)		440-1	405 (500-1)	440-1¼
CIRCLING **	440-1	405 (500-1)	500-1	500-1½	465 (500-1½)	600-2
WITHOUT DME or RADAR						
S-22L	580-¾	545 (600-¾)		580-1¼	545 (600-1¼)	580-1½
CIRCLING **	580-1	545 (600-1)		580-1½	545 (600-1½)	600-2
SANTA ANA ALTIMETER SETTING MINIMUMS						
S-22L *	480-¾	445 (500-¾)		480-1	445 (500-1)	480-1½
CIRCLING **	480-1	445 (500-1)	540-1	540-1½	505 (600-1½)	640-2
SANTA ANA ALTIMETER SETTING WITHOUT DME or RADAR						
S-22L	620-¾	585 (600-¾)		620-1¼	585 (600-1¼)	620-1½
CIRCLING **	620-1	585 (600-1)		620-1½	585 (600-1½)	640-2



HIRL Rwy 4R-22L
MIRL Rwy 4L-22R
REIL Rwy 22L

FAF to MAP 4.3 NM					
Knots	60	90	120	150	180
Min:Sec	4:18	2:52	2:09	1:43	1:26

VOR or TACAN RWY 22L

SW-3, 30 DEC 2021 to 27 JAN 2022

SW-3, 30 DEC 2021 to 27 JAN 2022