

WAAS CH 48924 W23A	APP CRS 232°	Rwy Idg TDZE Apt Elev	5100 1719 1720
--	------------------------	-----------------------------	---

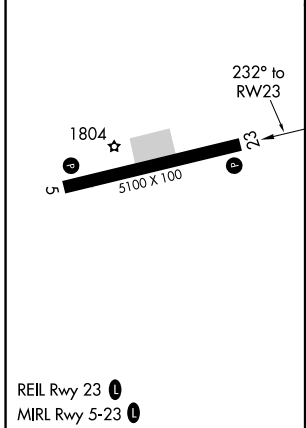
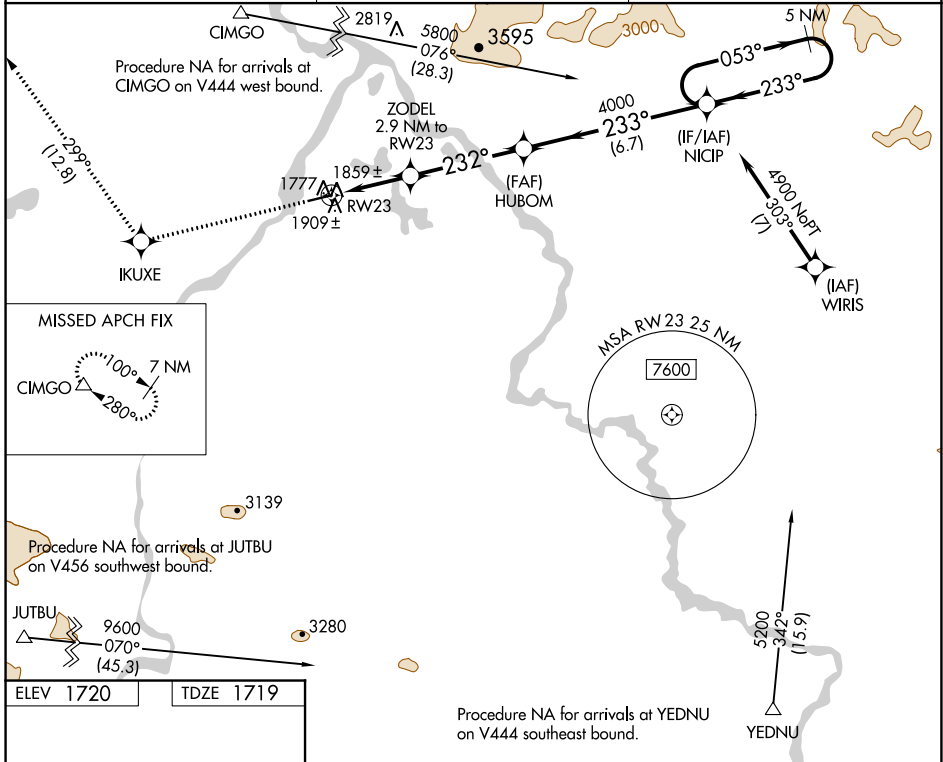
RNAV (GPS) RWY 23

NORTHWAY (ORT)(PAOR)

⚠ When local altimeter setting not received, procedure NA.
⚠ DME/DME RNP-0.3 NA. Helicopter visibility reduction below 3/4 SM NA.

MISSED APPROACH: Climb to 8000 direct IKUXE and on track 299° to CIMGO and hold, continue climb-in-hold to 8000.

ASOS 135.4	ANCHORAGE CENTER 126.55 323.0	NORTHWAY RADIO 123.6 (CTAF) 0
----------------------	---	---



8000	IKUXE	tr 299°	CIMGO				
				NICIP 5 NM Holding Pattern			
				HUBOM			
				ZODEL 2.9 NM to RWY 23			
				1.2 NM to RWY 23			
				2660			
				4000			
				233°			
				053°			
				4900			
				233°			
				6.7 NM			
				4.2 NM			
				1.7 NM			
				1.2			
CATEGORY	A	B	C	D			
LP MDA	2120-1	401 (400-1)	2120-1½	401 (400-1½)			
LNAV MDA	2160-1	441 (500-1)	2160-1¾	441 (500-1¾)			
CIRCLING	2260-1	540 (600-1)	2320-1½	2400-2¼	600 (600-1½)	680 (700-2¼)	

AK, 02 DEC 2021 to 27 JAN 2022

AK, 02 DEC 2021 to 27 JAN 2022