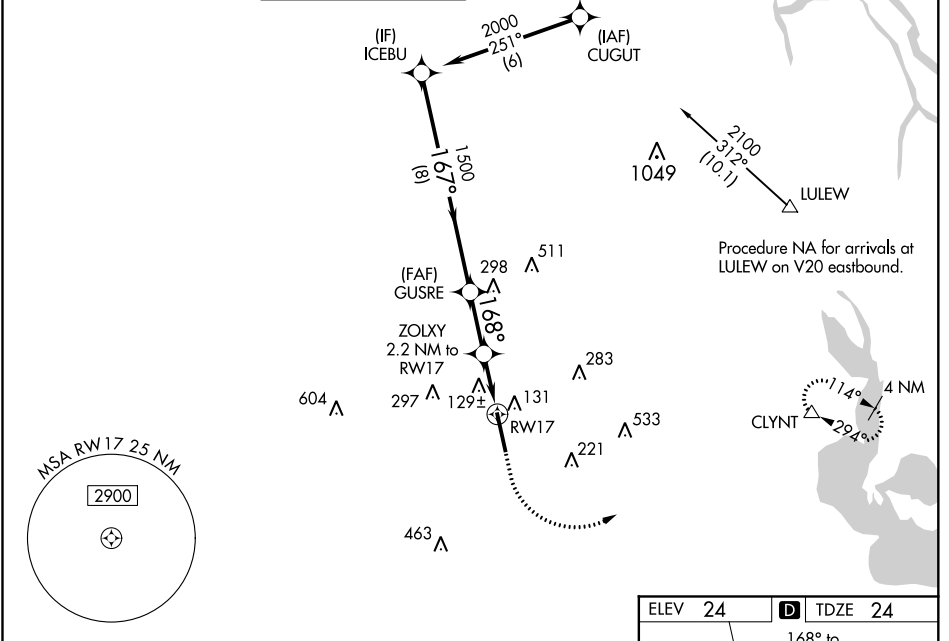


WAAS CH 82501 W17A	APP CRS 168°	Rwy Idg 8002 TDZE 24 Apt Elev 24
--	------------------------	---

RNAV (GPS) RWY 17

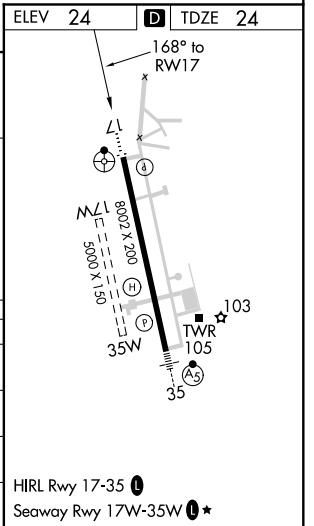
ACADIANA RGNL (A.R.A.)

RNP APCH.				ODALS		MISSED APPROACH: Climb to 480 then climbing left turn to 2000 direct CLYNT and hold.	
<p>▼ Circling NA to Rwy 17W and 35W. Inop table does not apply to LPV. For inop ALS, increase LNAV/VNAV all Cats visibility to 1½ SM and LNAV Cats C/D visibility to 1 SM. For uncompensated Baro-VNAV systems, LNAV/VNAV NA below -3°C or above 54°C.</p>							
ASOS 133.325	LAFAYETTE APP CON* 121.1 268.7	ACADIANA TOWER* 125.0 (CTAF) 239.3	GND CON 121.7	CLNC DEL 121.7	CLNC DEL 118.05 (when twr closed)	UNICOM 122.95	0* 122.7



VGSI and RNAV glidepath not coincident (VGSI Angle 3.00/TCH 51).

ICEBU	GUSRE	ZOLXY	RWY 17	CLYNT
2000	1500	2.2 NM to RWY 17	1 NM to RWY 17	480
GP 3.00°	TCH 51	*760		
8 NM		2.3 NM	1.2 NM	1 NM
CATEGORY	A	B	C	D
LPV DA		274-¾	250 (300-¾)	
LNAV/VNAV DA		420-1½	396 (400-1½)	
LNAV MDA	380-¾	356 (400-¾)	380-7/8	356 (400-7/8)
CIRCLING	440-1 416 (500-1)	480-1 456 (500-1)	600-1½ 576 (600-1½)	680-2 656 (700-2)



SC-4, 30 DEC 2021 to 27 JAN 2022

SC-4, 30 DEC 2021 to 27 JAN 2022