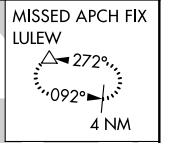
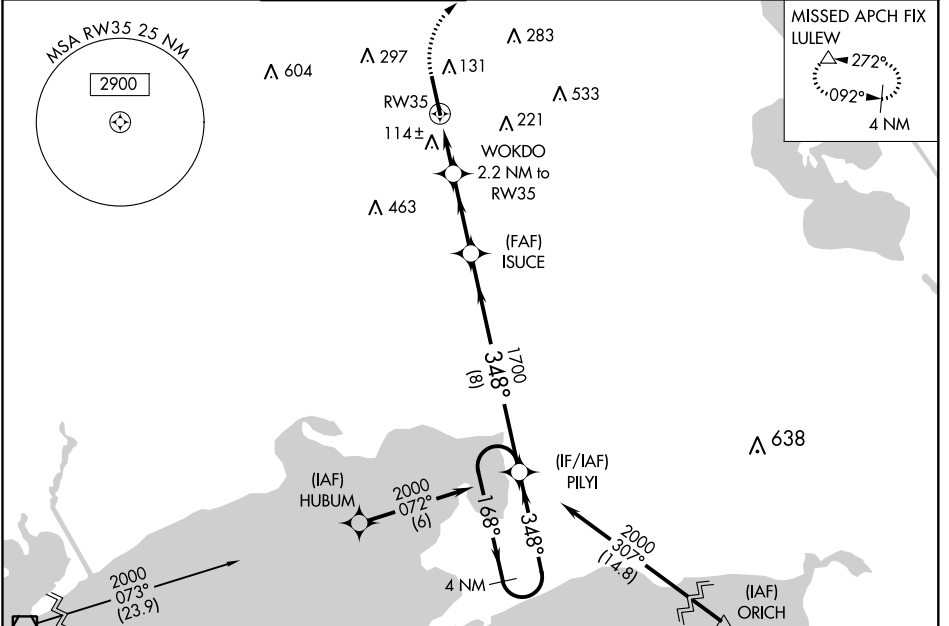


WAAS CH <b>40301</b> <b>W35A</b>	APP CRS <b>348°</b>	Rwy Idg TDZE <b>21</b> Apt Elev <b>24</b>	<b>8002</b>
--	------------------------	---	-------------

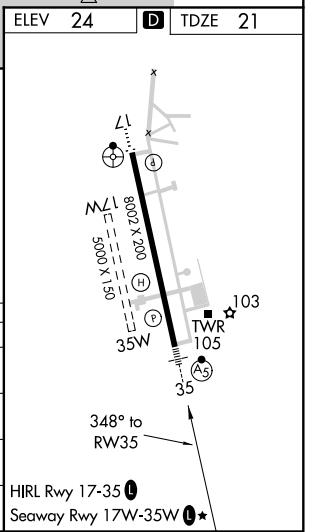
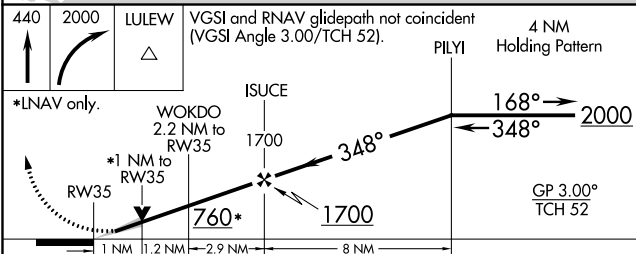
# RNAV (GPS) RWY 35

ACADIANA RGNL (A.R.A.)

RNP APCH.				MALSR	MISSED APPROACH: Climb to 440 then climbing right turn to 2000 direct LULEW and hold.		
▼ For uncompensated Baro-VNAV systems, LNAV/VNAV NA below -3°C or above 54°C. For inop ALS, increase LNAV/VNAV all Cats visibility to ½ SM and LNAV Cats C/D visibility to 1 SM. Circling NA to Rwy 17W and 35W.							
ASOS <b>133.325</b>	LAFAYETTE APP CON* <b>121.1 268.7</b>	ACADIANA TOWER* <b>125.0 (CTAF) 239.3</b>	GND CON <b>121.7</b>	CLNC DEL <b>121.7</b>	CLNC DEL <b>118.05</b> (when twr closed)	UNICOM <b>122.95</b>	<b>0</b> ★ <b>122.7</b>



ELEV 24	<b>D</b> TDZE 21
---------	------------------



CATEGORY	A	B	C	D
LPV DA		221-½	200 (200-½)	
LNAV/DA		303-½	282 (300-½)	
LNAV MDA	380-½	359 (400-½)	380-¾	359 (400-¾)
<b>C</b> CIRCLING	440-1 416 (500-1)	480-1 456 (500-1)	600-1½ 576 (600-½)	680-2 656 (700-2)

SC-4, 30 DEC 2021 to 27 JAN 2022

SC-4, 30 DEC 2021 to 27 JAN 2022