

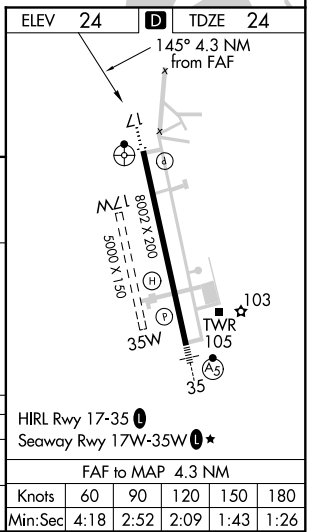
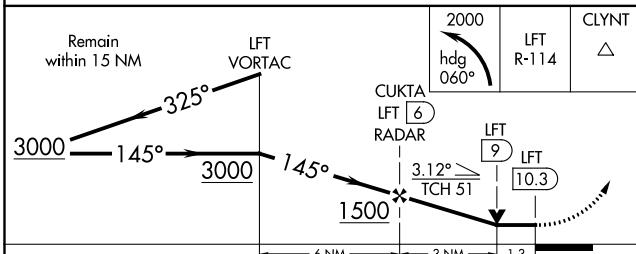
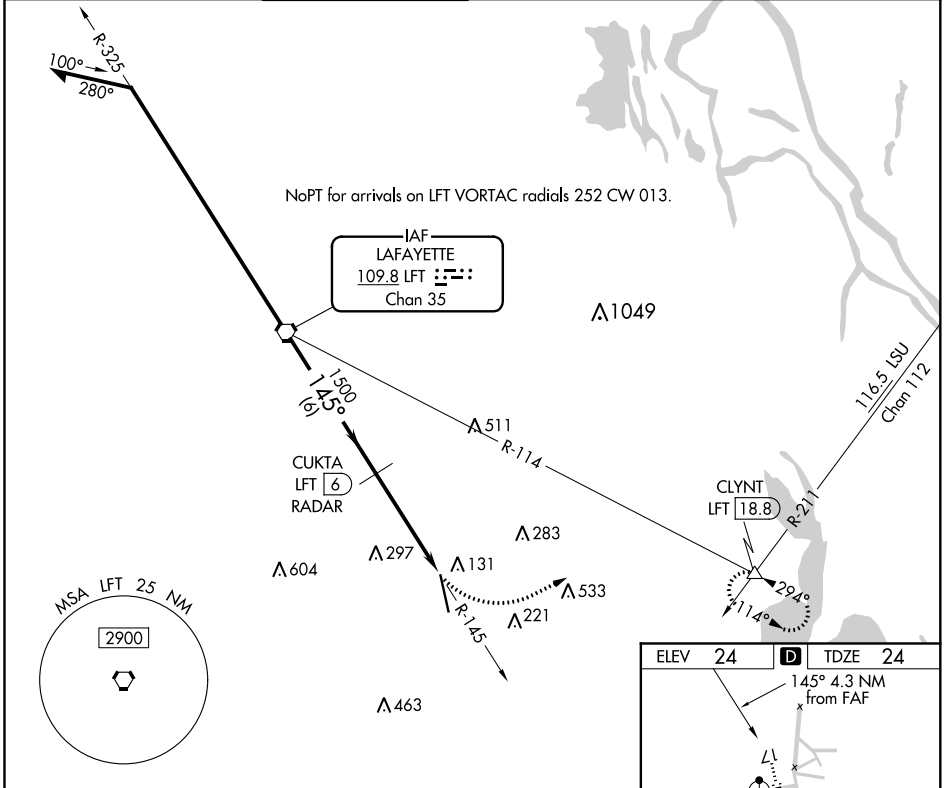
VORTAC LFT <b>109.8</b> Chan 35	APP CRS <b>145°</b>	Rwy Idg TDZE Apt Elev	<b>8002</b> <b>24</b> <b>24</b>
---------------------------------------	------------------------	-----------------------------	---------------------------------------

# VOR or TACAN RWY 17

ACADIANA RGNL (A.R.A.)

<p>▼ Circling NA to Rwy's 17W and 35W. ▲ DME or RADAR required. ▲ For inop ALS, increase S-17 Cat E visibility to 1½ mile.</p>	<p>ODALS ⬆️</p>	<p>MISSED APPROACH: Climbing left turn to 2000 on heading 060° and LFT VORTAC R-114 to CLYNT INT/18.8 DME and hold.</p>
--	---------------------	---

ASOS <b>133.325</b>	LAFAYETTE APP CON* <b>121.1 268.7</b>	ACADIANA TOWER* <b>125.0 (CTAF) 0 239.3</b>	GND CON <b>121.7</b>	CLNC DEL <b>121.7</b>	CLNC DEL <b>118.05</b> (when twr closed)	UNICOM <b>122.95</b>	<b>0*</b> <b>122.7</b>
------------------------	--	--	-------------------------	--------------------------	--	-------------------------	---------------------------



CATEGORY	A	B	C	D	E
S-17	500-¾ 476 (500-¾)		500-1¼ 476 (500-1¼)		
<b>C</b> CIRCLING	500-1 476 (500-1)		600-1½ 576 (600-1½)	680-2 656 (700-2)	900-3 876 (900-3)

HIRL Rwy 17-35		Seaway Rwy 17W-35W	
FAF to MAP 4.3 NM			
Knots	60	90	120 150 180
Min:Sec	4:18	2:52	2:09 1:43 1:26

SC-4, 30 DEC 2021 to 27 JAN 2022

SC-4, 30 DEC 2021 to 27 JAN 2022