

APP CRS	Rwy Idg	3635
121°	TDZE	1108
	Apt Elev	1110

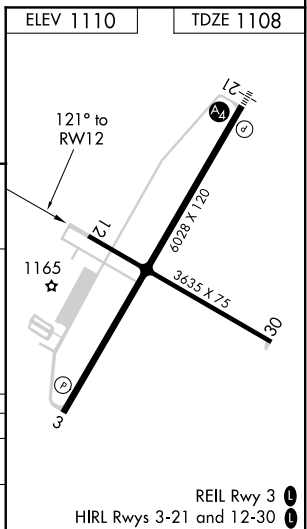
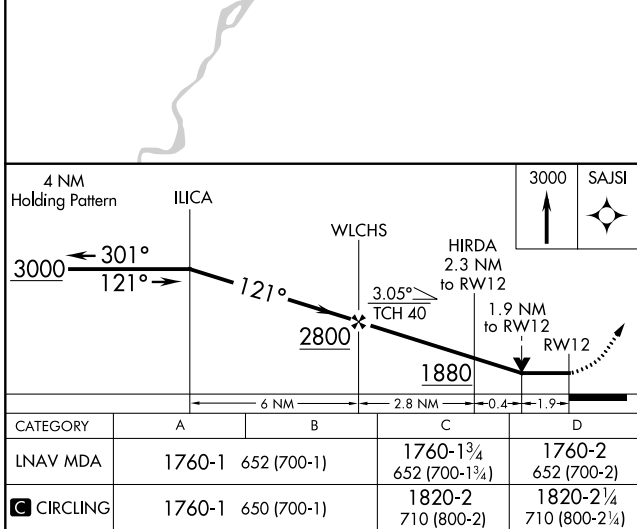
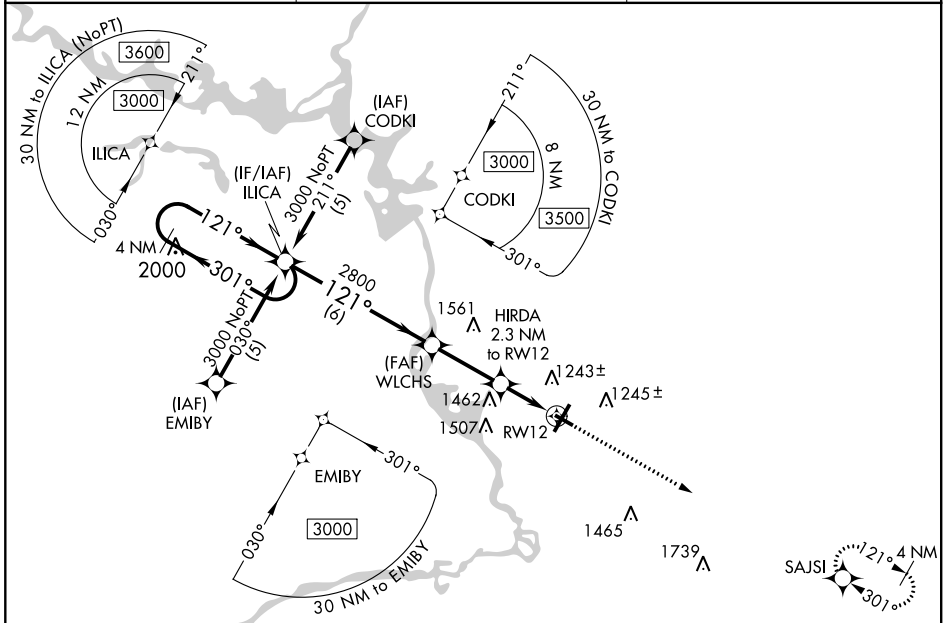
RNAV (GPS) RWY 12

STEVENS POINT MUNI (STE)

⚠ DME/DME RNP-0.3 NA. Rwy 12 helicopter visibility reduction below ¼ SM NA. When local altimeter setting not received, use Mosinee altimeter setting and increase all MDA 60 feet, increase LNAV Cat C and D visibility ¼ mile and Circling Cat C and D visibility ½ mile. VDP NA when using Mosinee altimeter setting.

MISSED APPROACH: Climb to 3000 direct SAJSI and hold.

AWOS-3 119.275	MINNEAPOLIS CENTER 124.4 317.7	UNICOM 122.7 (CTAF) 0
--------------------------	------------------------------------------	---------------------------------



EC-3, 30 DEC 2021 to 27 JAN 2022

EC-3, 30 DEC 2021 to 27 JAN 2022