

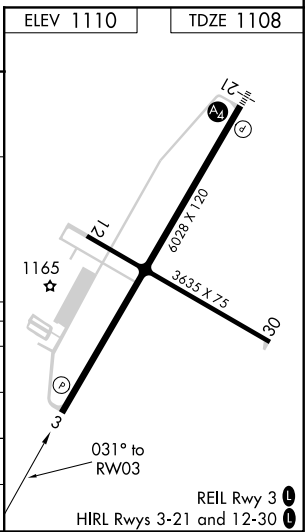
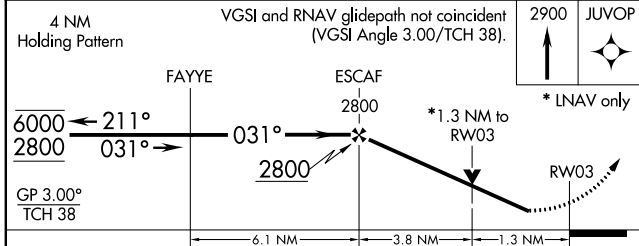
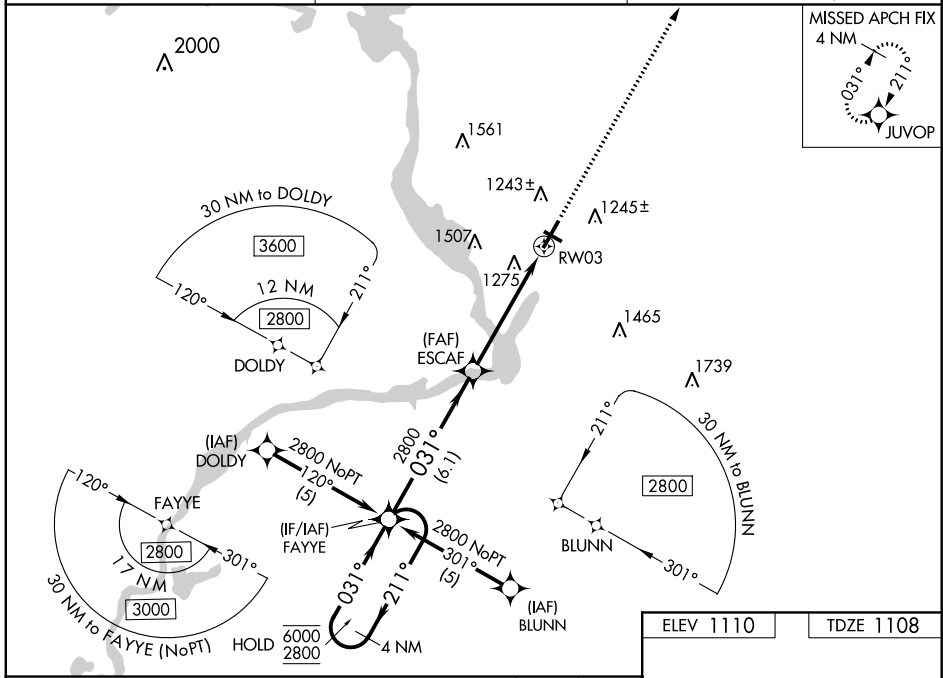
WAAS CH <b>77910</b> <b>W03A</b>	APP CRS <b>031°</b>	Rwy Idg TDZE Apt Elev	<b>6028</b> <b>1108</b> <b>1110</b>
--	------------------------	-----------------------------	---

# RNAV (GPS) RWY 3

STEVENS POINT MUNI (STE)

RNP APCH.	MISSED APPROACH: Climb to 2900 direct JUVOP and hold.
<p><b>▼</b> Rwy 3 helicopter visibility reduction below <math>\frac{3}{4}</math> SM NA.</p> <p><b>▲</b> For uncompensated Baro-VNAV systems, LNAV/VNAV NA below -17° C or above 54°C.</p>	

AWOS-3 <b>119.275</b>	MINNEAPOLIS CENTER <b>124.4 317.7</b>	UNICOM <b>122.7 (CTAF) 0</b>
--------------------------	--	---------------------------------



CATEGORY	A	B	C	D
LPV DA	1409-1 301 (300-1)			
LNAV/VNAV DA	1594-1 $\frac{3}{4}$ 486 (500-1 $\frac{3}{4}$ )			
LNAV MDA	1540-1	432 (500-1)	1540-1 $\frac{1}{4}$ 432 (500-1 $\frac{1}{4}$ )	1540-1 $\frac{1}{2}$ 432 (500-1 $\frac{1}{2}$ )
<b>C</b> CIRCLING	1580-1 470 (500-1)	1600-1 490 (500-1)	1820-2 710 (800-2)	1820-2 $\frac{1}{4}$ 710 (700-2 $\frac{1}{4}$ )

EC-3, 30 DEC 2021 to 27 JAN 2022

EC-3, 30 DEC 2021 to 27 JAN 2022