

LOC I-SKC 109.5	APP CRS 103°	Rwy Idg 5849
		TDZE 901
		Apt Elev 911

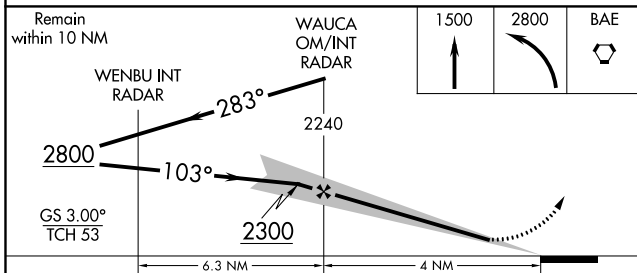
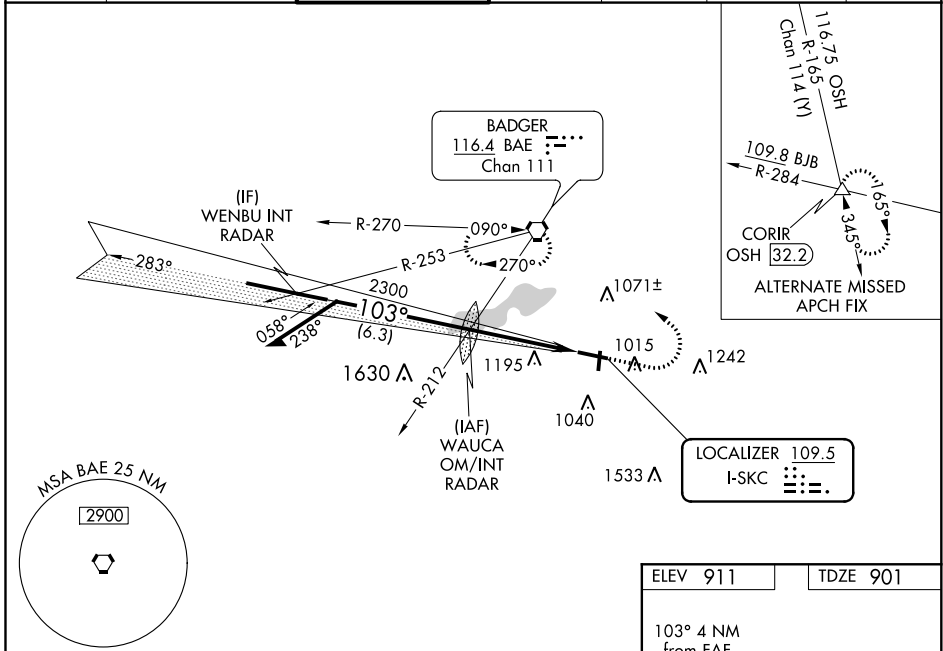
ILS or LOC RWY 10

WAUKESHA COUNTY (U/S)

RADAR required for procedure entry.

MALSRS
 MISSED APPROACH: Climb to 1500 then climbing left turn to 2800 direct BAE VORTAC and hold.

ATIS 118.875	MILWAUKEE APP CON 125.35 307.0	WAUKESHA TOWER * 123.7 (CTAF)	GND CON 121.6	CLNC DEL 121.6	CLNC DEL 128.7 (When twr closed)	UNICOM 122.95
------------------------	--	---	-------------------------	--------------------------	---	-------------------------



CATEGORY	A	B	C	D
S-ILS-10	1101-½		200 (200-½)	
S-LOC-10	1400-½	499 (500-½)	1400-1	499 (500-1)
CIRCLING	1460-1 549 (600-1)	1500-1 589 (600-1)	1540-1¾ 629 (700-1¾)	1640-2¼ 729 (800-2¼)

ELEV 911	TDZE 901
----------	----------

Map view details: 103° 4 NM from FAF. Waukesha Tower 10. Waukesha Tower 81. Waukesha Tower 5849 X 100. Waukesha Tower 57.7 X 100. Waukesha Tower 36. Waukesha Tower 28. Waukesha Tower TWR 960. Waukesha Tower 36. Waukesha Tower 109.5 I-SKC. Waukesha Tower 103°. Waukesha Tower 283°. Waukesha Tower 6.3 NM. Waukesha Tower 4 NM. Waukesha Tower 1500. Waukesha Tower 2800. Waukesha Tower BAE. Waukesha Tower 103° 4 NM from FAF. Waukesha Tower 10. Waukesha Tower 81. Waukesha Tower 5849 X 100. Waukesha Tower 57.7 X 100. Waukesha Tower 36. Waukesha Tower 28. Waukesha Tower TWR 960. Waukesha Tower 36.

EC-3, 30 DEC 2021 to 27 JAN 2022

EC-3, 30 DEC 2021 to 27 JAN 2022

HIRL Rwy 10-28					
MIRL Rwy 18-36					
REIL Rwy 18, 28 and 36					
FAF to MAP 4 NM					
Knots	60	90	120	150	180
Min:Seq	4:00	2:40	2:00	1:36	1:20