

LOC I-RHI 111.3	APP CRS 091°	Rwy Idg 6799
		TDZE 1624
		Apt Elev 1624

ILS or LOC RWY 9
RHINELANDER/ONEIDA COUNTY (RHI)

ADF required. When local altimeter setting not received, use Tomahawk altimeter setting and increase DA to 1883 feet; increase all MDAs 60 feet and visibility Cat C and D ¼ SM. **DME from RHI VOR/DME.

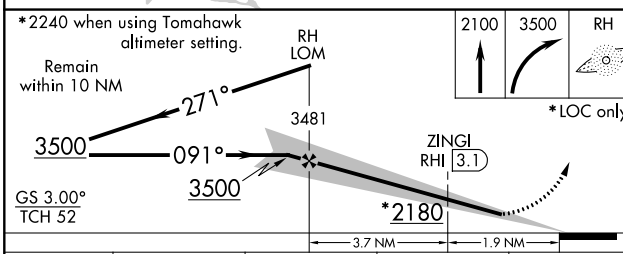
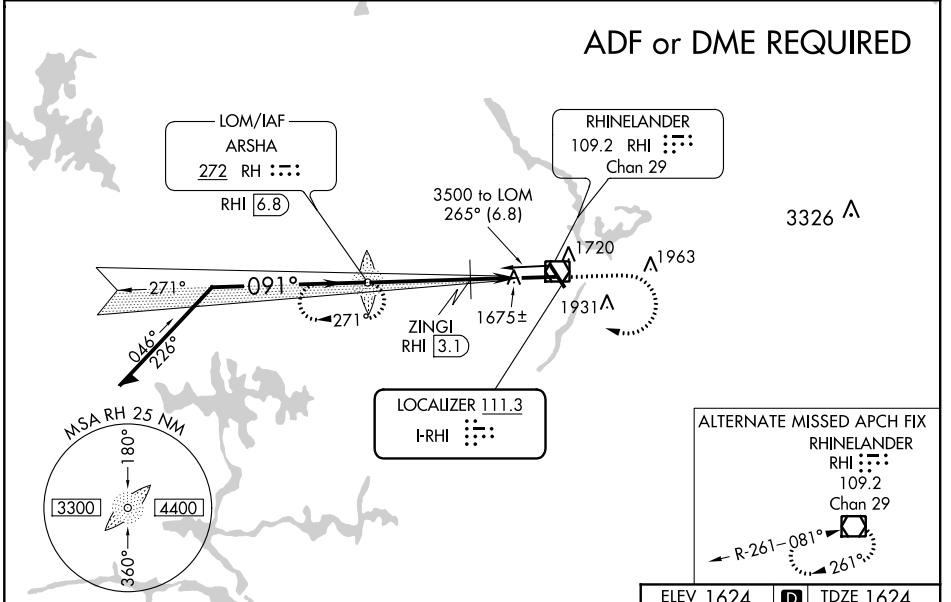
MALSR

MISSED APPROACH:
Climb to 2100 then climbing right turn to 3500 direct ARSHA LOM/RHI 6.8 DME and hold.

ASOS
126.825

MINNEAPOLIS CENTER
133.65 281.5

UNICOM
123.0 (CTAF)



ELEV 1624	TDZE 1624
-----------	-----------

CATEGORY	A	B	C	D
S-ILS 9	1824-½ 200 (200-½)			
S-LOC 9	2180-½	556 (600-½)	2180-1	2180-1¼
CIRCLING	2180-1	2260-1	2260-1¾	2280-2
	556 (600-1)	636 (700-1)	636 (700-1¾)	656 (700-2)
ZINGI FIX MINIMUMS**				
S-LOC 9	2020-½ 396 (400-½)		2020-¾	
			396 (400-¾)	
CIRCLING	2100-1	2260-1	2260-1¾	2280-2
	476 (500-1)	636 (700-1)	636 (700-1¾)	656 (700-2)

091° 5.6 NM from FAF

HIRL Rwy 9-27 and 15-33
REIL Rwy 15, 27 and 33

FAF to MAP 5.6 NM

Knots	60	90	120	150	180
Min:Sec	5:36	3:44	2:48	2:14	1:52

EC-3, 30 DEC 2021 to 27 JAN 2022

EC-3, 30 DEC 2021 to 27 JAN 2022