

APP CRS	Rwy Idg	5201
150°	TDZE	1600
	Apt Elev	1624

RNAV (GPS) RWY 15

RHINELANDER/ONEIDA COUNTY (RHI)

RNP APCH - GPS.

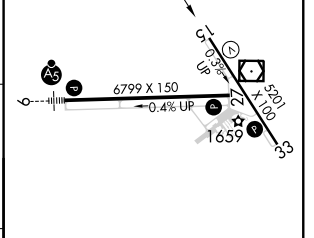
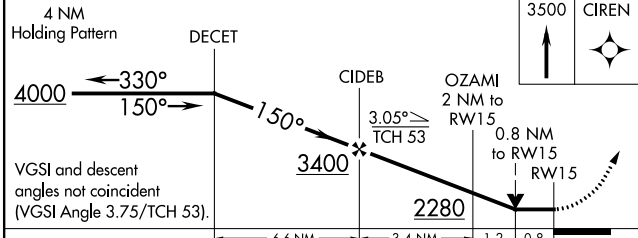
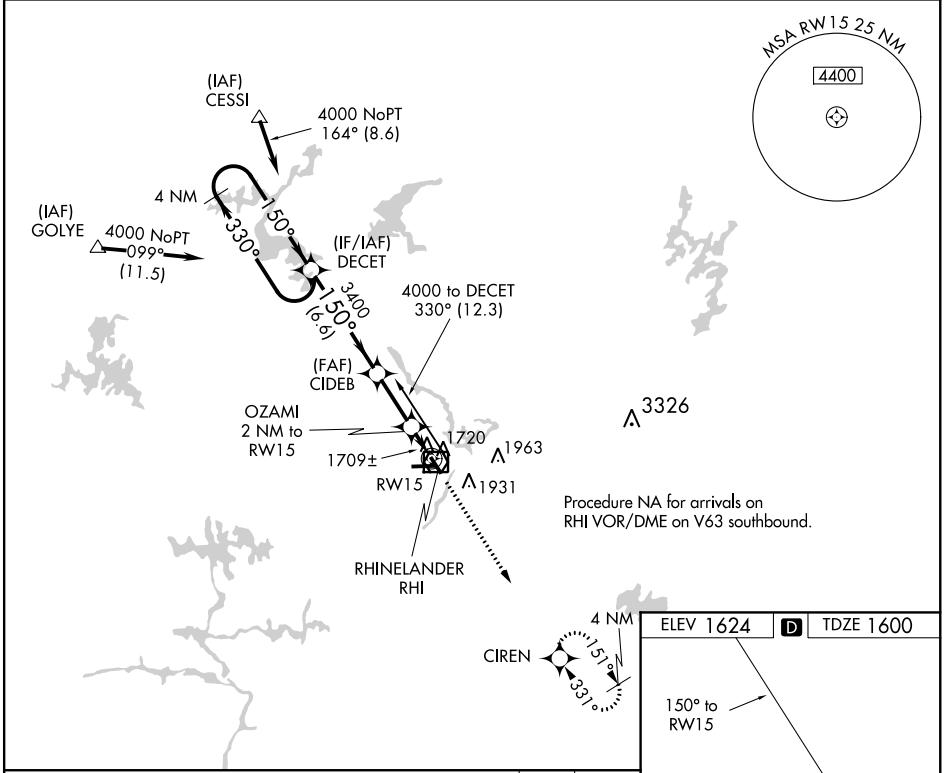
⚠ Helicopter visibility reduction below 3/4 SM NA. When local altimeter setting not received, use Tomahawk altimeter setting and increase all MDA 60 feet, increase LNAV and Circling visibility Cats C/D 1/4 mile.

MISSED APPROACH:
Climb to 3500 direct CIREN and hold.

ASOS
126.825

MINNEAPOLIS CENTER
133.65 281.5

UNICOM
123.0 (CTAF)



CATEGORY	A	B	C	D
LNAV MDA	1980-1 380 (400-1)			1980-1 1/4 380 (400-1 1/4)
CIRCLING	2100-1 476 (500-1)	2260-1 636 (700-1)	2260-1 3/4 636 (700-1 3/4)	2280-2 656 (700-2)

HIRL Rwy 9-27 and 15-33
REIL Rwy 15, 27 and 33

EC-3, 30 DEC 2021 to 27 JAN 2022

EC-3, 30 DEC 2021 to 27 JAN 2022