

WAAS CH 50217 W27A	APP CRS 271°	Rwy Idg TDZE Apt Elev	6799 1606 1624
--	------------------------	-----------------------------	---

RNAV (GPS) RWY 27

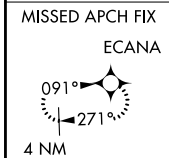
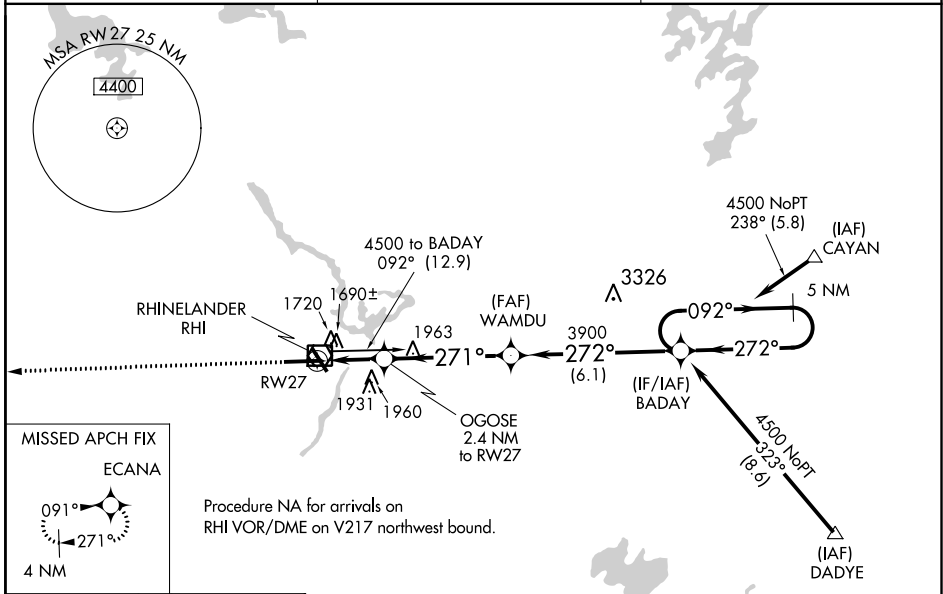
RHINELANDER/ONEIDA COUNTY (RHI)

RNP APCH - GPS.

⚠ For uncompensated Baro-VNAV systems, LNAV/VNAV NA below -18°C or above 54°C. When local altimeter setting not received, use Tomahawk altimeter setting: increase LPV DA to 1865 feet and visibility ¼ SM; increase LNAV/VNAV DA to 2042 feet and visibility ¼ SM; increase all MDAs 60 feet and visibility Cat C and D ¼ SM. Baro-VNAV and VDP NA when using Tomahawk altimeter setting.

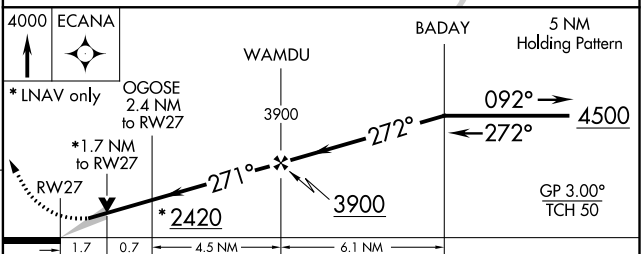
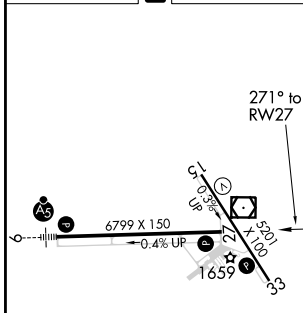
MISSED APPROACH:
Climb to 4000 direct ECANA and hold.

ASOS 126.825	MINNEAPOLIS CENTER 133.65 281.5	UNICOM 123.0 (CTAF) 0
------------------------	---	---------------------------------



Procedure NA for arrivals on RHI VOR/DME on V217 northwest bound.

ELEV 1624	D	TDZE 1606
-----------	----------	-----------



CATEGORY	A	B	C	D
LPV DA	1806-3/4 200 (200-3/4)			
LNAV/VNAV DA	1983-1 1/4 377 (400-1 1/4)			
LNAV MDA	2180-1	574 (600-1)	2180-1 1/2 574 (600-1 1/2)	2180-1 3/4 574 (600-1 3/4)
CIRCLING	2180-1 556 (600-1)	2260-1 636 (700-1)	2260-1 3/4 636 (700-1 3/4)	2280-2 656 (700-2)

EC-3, 30 DEC 2021 to 27 JAN 2022

EC-3, 30 DEC 2021 to 27 JAN 2022