

VOR/DME RHI	APP CRS	Rwy Idg	6799
109.2	281°	TDZE	1606
Chan 29		Apt Elev	1624

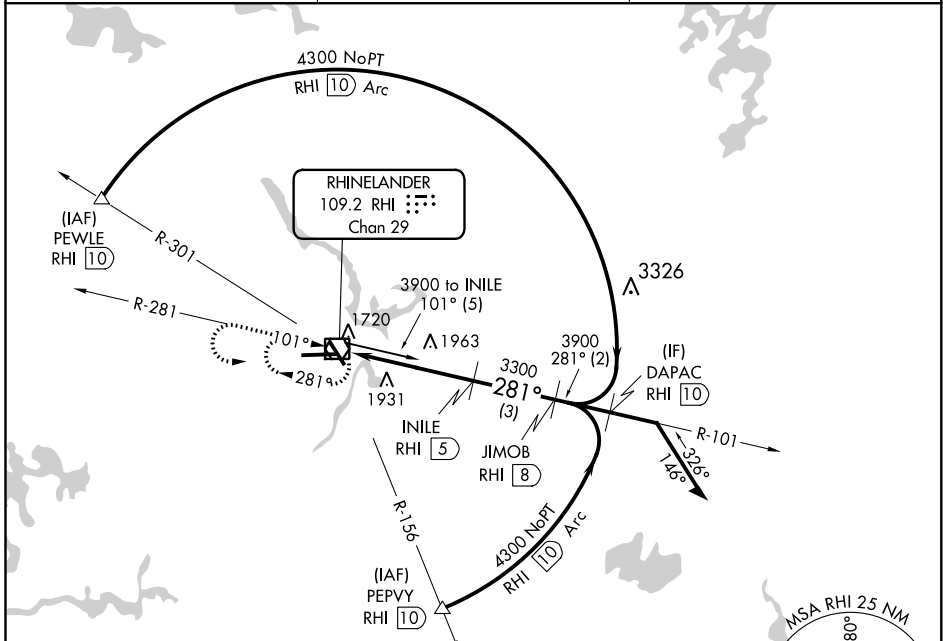
VOR/DME RWY 27

RHINELANDER/ONEIDA COUNTY (RHI)

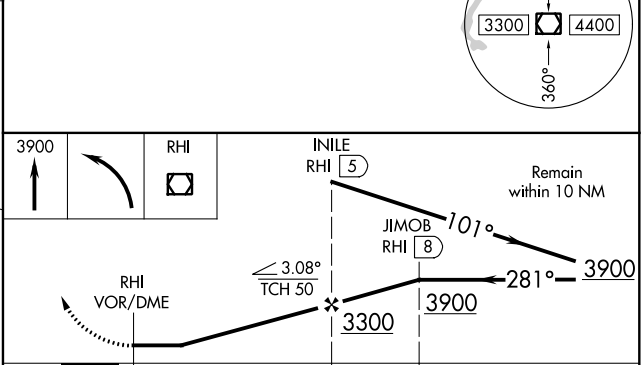
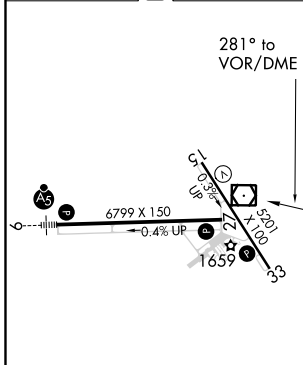
When local altimeter setting not received, use Tomahawk altimeter setting and increase all MDA 60 feet and Cat C/D visibility ¼ mile.

MISSED APPROACH: Climb to 3900 then left turn direct RHI VOR/DME and hold.

ASOS 126.825	MINNEAPOLIS CENTER 133.65 281.5	UNICOM 123.0 (CTAF)
------------------------	---	-------------------------------



ELEV 1624	D	TDZE 1606
-----------	---	-----------



CATEGORY	A	B	C	D
S-27	2220-1	614 (600-1)	2220-1¾	614 (600-1¾)
CIRCLING	2220-1	2260-1	2260-1¾	2280-2
	596 (600-1)	636 (700-1)	636 (700-1¾)	656 (700-2)

EC-3, 30 DEC 2021 to 27 JAN 2022

EC-3, 30 DEC 2021 to 27 JAN 2022