


LOC FFCM 109.7	APP CRS 098°	Rwy Idg TDZE Apt Elev	5000 906 906
--------------------------	------------------------	-----------------------------	---

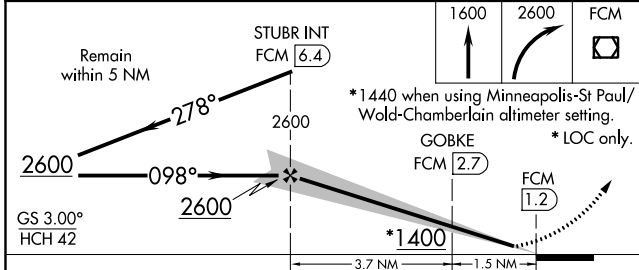
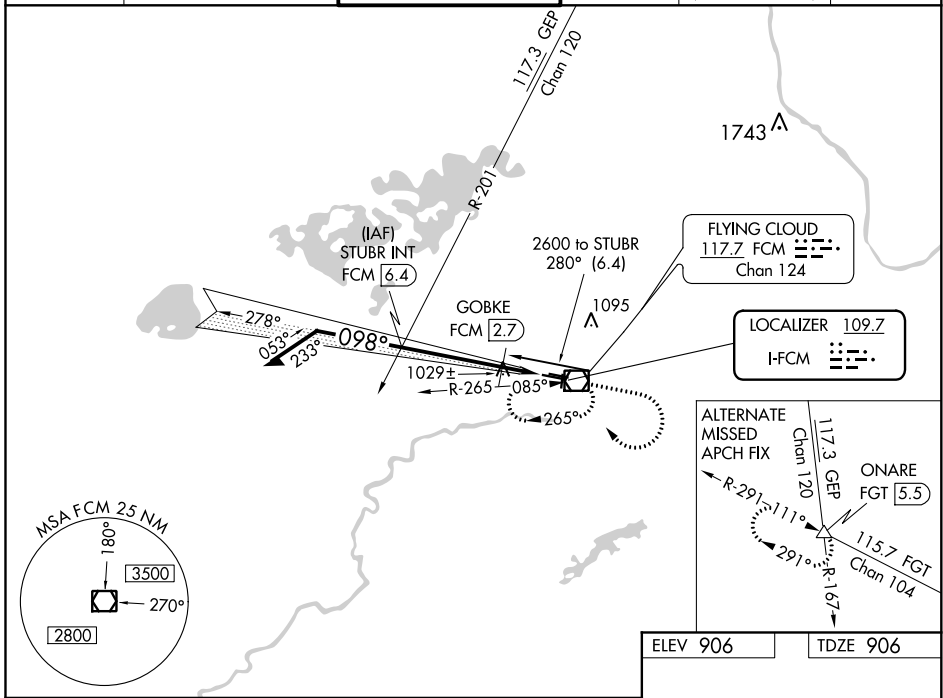
COPTER ILS or LOC RWY 10R

FLYING CLOUD (FCM)

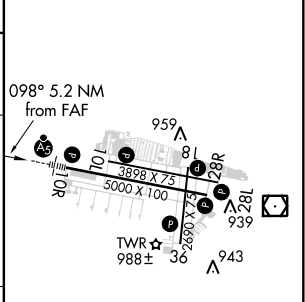
⚠ For inoperative MALS, increase visibility to 1/2 mile. When local altimeter setting not received, use Minneapolis-St Paul Intl-Wold Chamberlain altimeter setting and increase DA 34 feet and all MDA 40 feet.

MALS  MISSED APPROACH: Climb to 1600 then climbing right turn to 2600 direct FCM VOR/DME and hold, continue climb-in-hold to 2600.


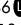
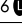
ATIS 124.9	MINNEAPOLIS APP CON 134.7 284.7	FLYING CLOUD TOWER * 119.15 (CTAF) 	GND CON 121.7	CLNC DEL 121.7 (When twr closed)	UNICOM 122.95
----------------------	---	--	-------------------------	---	-------------------------



ELEV 906	TDZE 906
----------	----------



CATEGORY	COPTER	B	C	D
H-ILS 10R	1106-1/4 200 (200-1/4)		NA	
H-LOC 10R	1400-1/4 494 (500-1/4)		NA	
GOBKE FIX MINIMUMS (DME REQUIRED)				
H-LOC 10R	1280-1/4 374 (400-1/4)		NA	

HIRL Rwy 10R-28L 					
REIL Rwy 10L, 28R					
REIL Rwy 18, 28L, and 36 					
MIRL Rwy 10L-28R and 18-36 					
FAF to MAP 5.2 NM					
Knots	45	60	75	90	105
Min:Sec	6:56	5:12	4:10	3:28	2:58

NC-1, 30 DEC 2021 to 27 JAN 2022

NC-1, 30 DEC 2021 to 27 JAN 2022