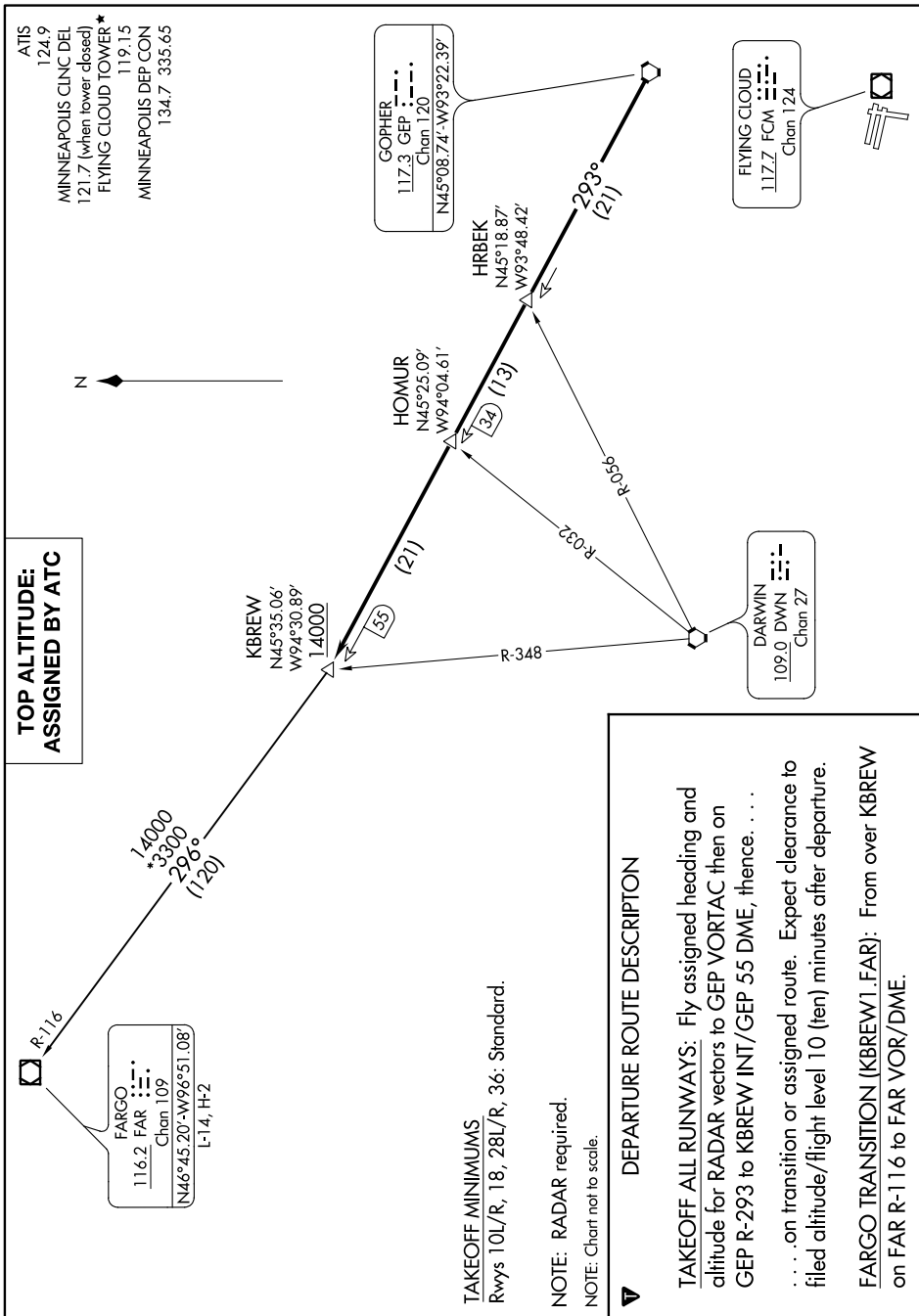


**KBREW ONE DEPARTURE**  
(KBREW1.KBREW) 20086

AL-5094 (FAA)

FLYING CLOUD (FCM)  
MINNEAPOLIS, MINNESOTA

NC-1, 30 DEC 2021 to 27 JAN 2022



**KBREW ONE DEPARTURE**  
(KBREW1.KBREW) 01FEB18

MINNEAPOLIS, MINNESOTA  
FLYING CLOUD (FCM)

NC-1, 30 DEC 2021 to 27 JAN 2022

**TOP ALTITUDE:  
ASSIGNED BY ATC**

FARGO  
116.2 FAR  
Chan 109  
(N46°45.20'-W96°51.08'  
L-14, H-2)

KBREW  
N45°35.06'  
W94°30.89'  
14000

HOMUR  
N45°25.09'  
W94°04.61'

HRBEK  
N45°18.87'  
W93°48.42'

GOPHER  
117.3 GEP  
Chan 120  
(N45°08.74'-W93°22.39')

FLYING CLOUD  
117.7 FCM  
Chan 124

DARWIN  
109.0 DWN  
Chan 27

**DEPARTURE ROUTE DESCRIPTION**

**TAKEOFF ALL RUNWAYS:** Fly assigned heading and altitude for RADAR vectors to GEP VORTAC then on GEP R-293 to KBREW INT/GEP 55 DME, thence . . . .  
. . . .on transition or assigned route. Expect clearance to filed altitude/flight level 10 (ten) minutes after departure.  
**FARGO TRANSITION (KBREW1.FAR):** From over KBREW on FAR R-116 to FAR VOR/DME.

**TAKEOFF MINIMUMS**  
Rwys 10L/R, 18, 28L/R, 36: Standard.

**NOTE:** RADAR required.  
**NOTE:** Chart not to scale.