

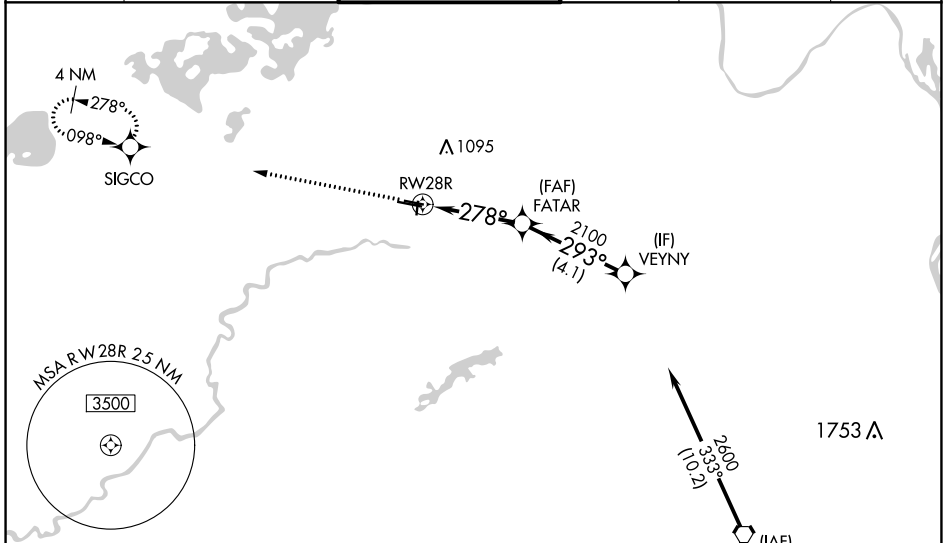
WAAS CH 99709 W28A	APP CRS 278°	Rwy Idg TDZE Apt Elev	3898 904 906
--	------------------------	-----------------------------	---

RNAV (GPS) RWY 28R

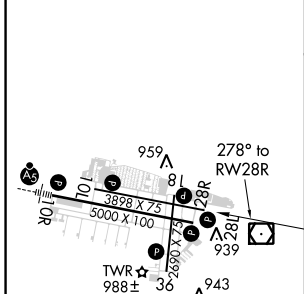
FLYING CLOUD (FCM)

RNP APCH.		<p>▼ Baro-VNAV NA when using Minneapolis-St Paul Intl/Wold Chamberlain altimeter setting. ▲ For uncompensated Baro-VNAV systems, LNAV/VNAV NA below -21°C (-5°F) or above 54°C (130°F). Helicopter visibility reduction below ¾ SM NA. When local altimeter setting not received, use Minneapolis-St Paul Intl/Wold Chamberlain altimeter setting and increase all DA 34 feet and all MDA 40 feet; increase Circling Cat D visibility ¼ mile. When Circling to Rwy 18, 36 at night, operational VGSI required, remain on or above VGSI glidepath until threshold.</p>		<p>MISSED APPROACH: Climb to 2800 direct SIGCO and hold.</p>	
-----------	--	--	--	--	--

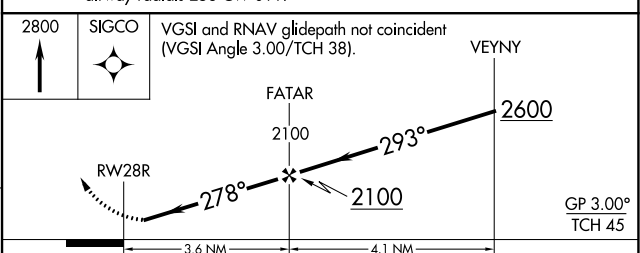
ATIS 124.9	MINNEAPOLIS APP CON 134.7 284.7	FLYING CLOUD TOWER * 119.15 (CTAF) 0	GND CON 121.7	CLNC DEL 121.7 (When twr closed)	UNICOM 122.95
----------------------	---	--	-------------------------	---	-------------------------



ELEV 906	TDZE 904
----------	----------



Procedure NA for arrivals on FGT VORTAC
 airway radials 258 CW 011.



CATEGORY	A	B	C	D
LPV DA		1154-1	250 (300-1)	
LNAV/ VNAV DA		1154-1	250 (300-1)	
LNAV MDA		1240-1	336 (400-1)	
C CIRCLING	1320-1 414 (500-1)	1440-1 534 (600-1)	1440-1½ 534 (600-1½)	1540-2 634 (700-2)

HIRL Rwy 10R-28L
 REIL Rwy 10L, 28R
 REIL Rwy 18, 28L, and 36
 MIRL Rwy 10L-28R and 18-36

FLYING CLOUD (FCM) RNAV (GPS) RWY 28R

NC-1, 30 DEC 2021 to 27 JAN 2022

NC-1, 30 DEC 2021 to 27 JAN 2022