

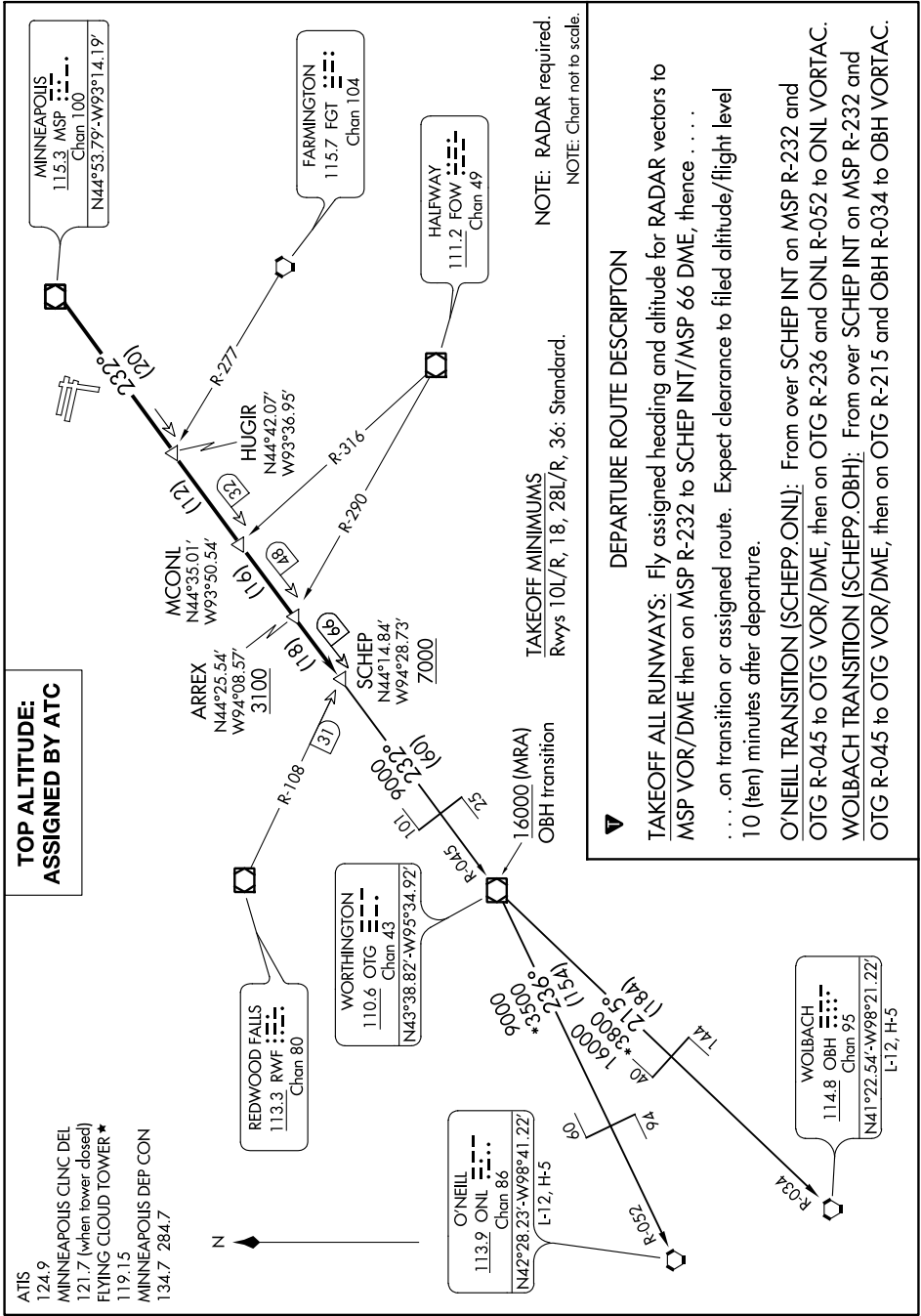
NC-1, 30 DEC 2021 to 27 JAN 2022

**TOP ALTITUDE:
ASSIGNED BY ATC**

ATIS
124.9
MINNEAPOLIS CLNC DEL
121.7 (when tower closed)
FLYING CLOUD TOWER *
119.15
MINNEAPOLIS DEP CON
134.7 284.7

SCHEP NINE DEPARTURE
(SCHEP9.SCHEP) 17AUG17

MINNEAPOLIS, MINNESOTA
FLYING CLOUD (FCM)



NOTE: RADAR required.
NOTE: Chart not to scale.

TAKEOFF MINIMUMS
Rwys 10L/R, 18, 28L/R, 36: Standard.

DEPARTURE ROUTE DESCRIPTION

TAKEOFF ALL RUNWAYS: Fly assigned heading and altitude for RADAR vectors to MSP VOR/DME then on MSP R-232 to SCHEP INT/MSP 66 DME, thence

. on transition or assigned route. Expect clearance to filed altitude/flight level 10 (ten) minutes after departure.

O'NEILL TRANSITION (SCHEP9.ONL): From over SCHEP INT on MSP R-232 and OTG R-045 to OTG VOR/DME, then on OTG R-236 and ONL R-052 to ONL VORTAC.

WOLBACH TRANSITION (SCHEP9.OBH): From over SCHEP INT on MSP R-232 and OTG R-045 to OTG VOR/DME, then on OTG R-215 and OBH R-034 to OBH VORTAC.

NC-1, 30 DEC 2021 to 27 JAN 2022