

NC-1, 30 DEC 2021 to 27 JAN 2022

**TOP ALTITUDE:
(JETS) 7000/
(PROPS) 5000**

ATIS 124.9
MINNEAPOLIS CLNC DEL
121.7 (when tower closed)
FLYING CLOUD TOWER ★
119.15
MINNEAPOLIS DEP CON
134.7 284.7

MINNEAPOLIS
115.3 MSP
Chan 100
N44°53.79'-W93°14.19'



TAKEOFF MINIMUMS
Rwys 10L/R, 18, 28L/R, 36: Standard.



HALFWAY
111.2 FOW
Chan 49

JEDET
N44°27.68'
W92°43.68'
4000

ZMBRO
N44°20.50'
W92°26.91'

ROCHESTER
112.0 RST
Chan 57

NODINE
117.9 ODI
Chan 126
N43°54.74'-W91°28.05'

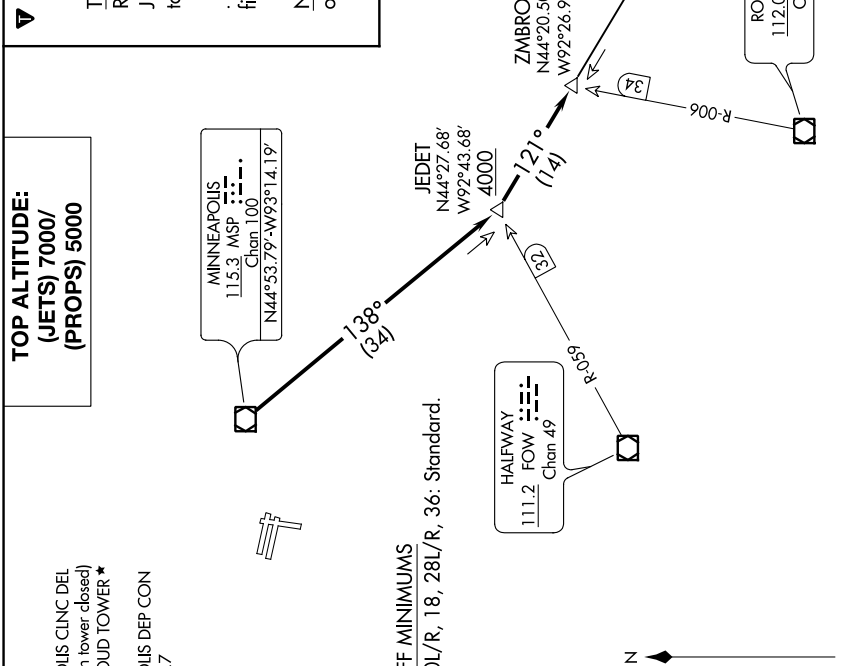
DEPARTURE ROUTE DESCRIPTION

TAKEOFF ALL RUNWAYS: Fly assigned heading and altitude for RADAR vectors to MSP VOR/DME then on MSP R-138 to cross JEDET INT/MSP 34 DME, at or above 4000; then on ODI R-301 to ZMBRO INT/ODI 50 DME, thence

.on assigned transition or route. Expect clearance to filed altitude/flight level 10 (ten) minutes after departure.

NODINE TRANSITION [ZMBRO7.ODI]: From over ZMBRO on ODI R-301 to ODI VORTAC.

NOTE: RADAR required.
NOTE: Chart not to scale.



NC-1, 30 DEC 2021 to 27 JAN 2022