

WAAS CH 40338 W26A	APP CRS 256°	Rwy Idg TDZE Apt Elev	4715 8 10
--	------------------------	-----------------------------	--------------------------------------

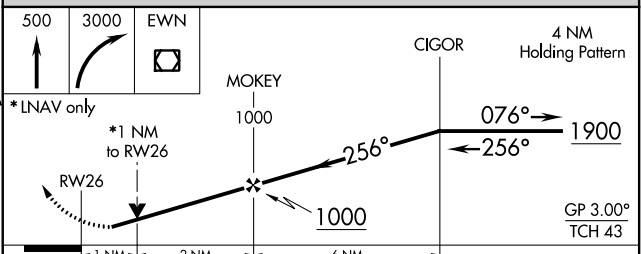
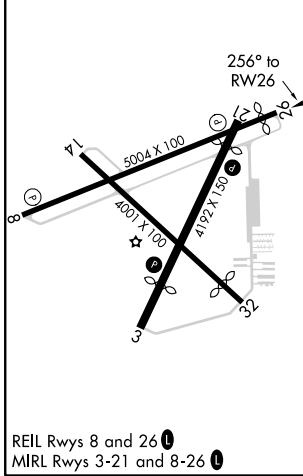
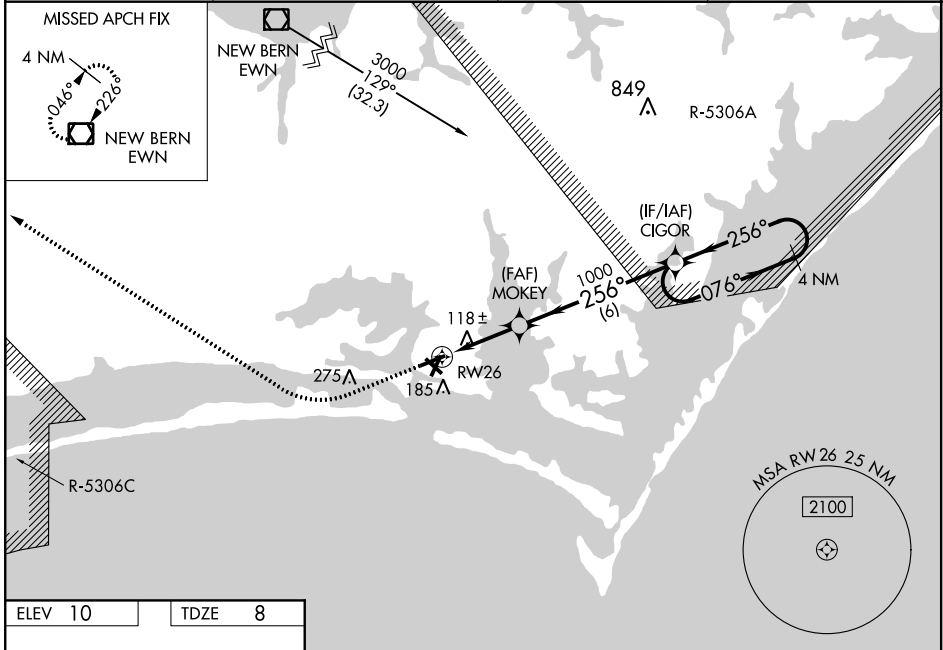
RNAV (GPS) RWY 26

MICHAEL J SMITH FIELD (MRH)

⚠ Night landing: Rwy 8, 14, 32 NA. Baro-VNAV and VDP NA when using Cherry Point MCAS altimeter setting. DME/DME RNP-0.3 NA. Helicopter visibility reduction below 3/4 SM NA. When local altimeter setting not received, use Cherry Point MCAS altimeter setting and increase LPV DA to 301 feet, LNAV/VNAV DA to 431 feet and increase all MDA 40 feet; increase LNAV/VNAV all Cats and LNAV Cats C/D visibility 1/8 mile and Circling Cat C 1/4 mile. ATC clearance required to penetrate R-5306A and R-5306C.

MISSED APPROACH: Climb to 500 then climbing right turn to 3000 direct EWN VOR/DME and hold.

ASOS 135.375	CHERRY POINT APP CON 132.575 268.7	CLNC DEL 125.65	UNICOM 122.8 (CTAF) 0
------------------------	--	---------------------------	---------------------------------



CATEGORY	A	B	C	D
LPV DA		264-1	256 (300-1)	
LNAV/VNAV DA		394-1 1/4	386 (400-1 1/4)	
LNAV MDA		380-1	372 (400-1)	
C CIRCLING	540-1	530 (600-1)	580-1 1/2 570 (600-1 1/2)	580-2 570 (600-2)

SE-2, 30 DEC 2021 to 27 JAN 2022

SE-2, 30 DEC 2021 to 27 JAN 2022