

WAAS CH 69227 W32A	APP CRS 321°	Rwy Idg TDZE Apt Elev	3511 10 11
--	------------------------	-----------------------------	---------------------------------------

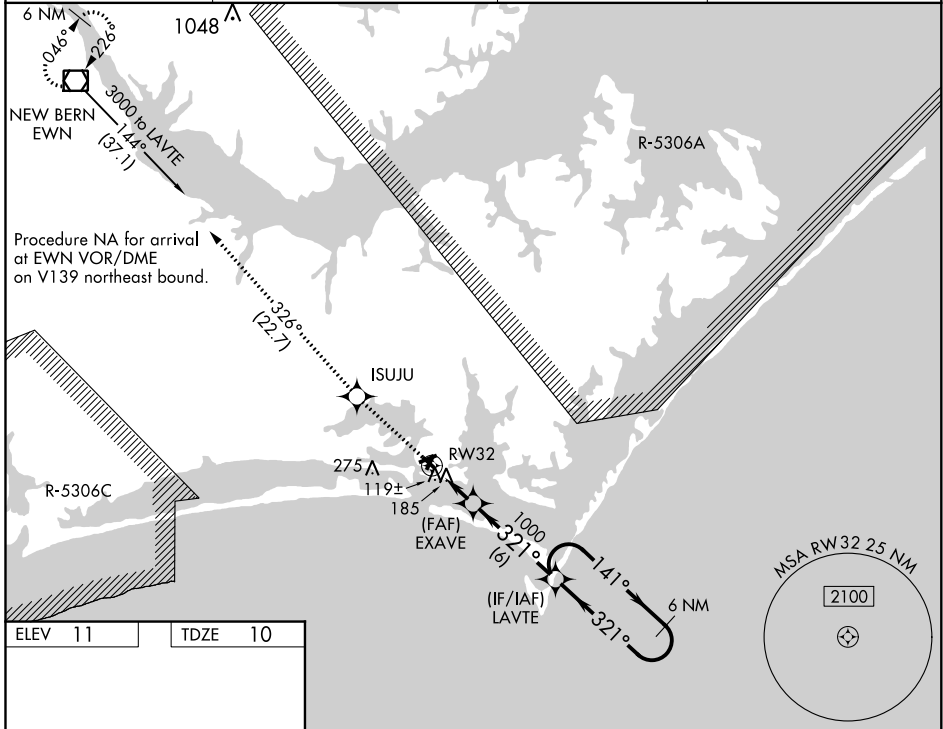
RNAV (GPS) RWY 32

MICHAEL J SMITH FIELD (MRH)

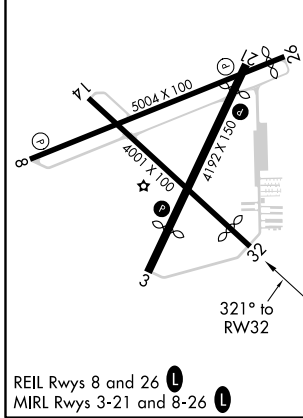
⚠ DME/DME RNP-0.3 NA. ATC clearance required to penetrate R-5306A and R-5306C. When local altimeter setting not received, use Cherry Point MCAS altimeter setting and increase all MDA 40 feet; increase LP Cats Cand D visibility 1/8 mile. Straight-in Rwy 32 NA at night, Circling Rwy 8, 14, 32 NA at night. Rwy 8, 14, 32 helicopter visibility reduction below 1 SM NA.

⚠ MISSED APPROACH: Climb to 3000 direct ISUJU and on track 326° to EWN VOR/DME and hold.

ASOS 135.375	CHERRY POINT APP CON 132.575 268.7	CLNC DEL 125.65	UNICOM 122.8 (CTAF) 0
------------------------	--	---------------------------	---------------------------------



ELEV 11	TDZE 10
---------	---------



3000	ISUJU	tr 326°	EWN	LAVTE	6 NM Holding Pattern
RWY 32		EXAVE	3.00° TCH 40	1000	141° → 2300
3 NM		6 NM			
CATEGORY	A	B	C	D	
LP MDA	380-1 370 (400-1)				
LNAV MDA	460-1	450 (500-1)	460-1 3/8	450 (500-1 3/8)	
CIRCLING	540-1	529 (600-1)	540-1 1/2	620-2	609 (700-2)

SE-2, 30 DEC 2021 to 27 JAN 2022

SE-2, 30 DEC 2021 to 27 JAN 2022