

|                            |                        |                             |   |
|----------------------------|------------------------|-----------------------------|---|
| LOC I-PWWT<br><b>111.1</b> | APP CRS<br><b>197°</b> | Rwy Idg<br>TDZE<br>Apt Elev | <b>6000</b><br><b>442</b><br><b>444</b> |
|----------------------------|------------------------|-----------------------------|---|

# ILS or LOC RWY 20

BREMERTON NTL (PWT)

**⚠** Circling NA for Cats C and D west of Rwy 2-20. When local altimeter setting not received, use Seattle-Tacoma Intl altimeter setting and increase all DA 45 feet, all MDA 60 feet and increase S-LOC 20 Cat C and D visibility 1/2 SM, Circling Cat A, C and D visibility 1/4 SM. For inop ALS, increase S-LOC 20 Cat C and D visibility to 2 SM. For inop ALS, when using Seattle-Tacoma Intl altimeter setting, increase S-LOC 20 Cat C and D visibility to 2 1/2 SM.

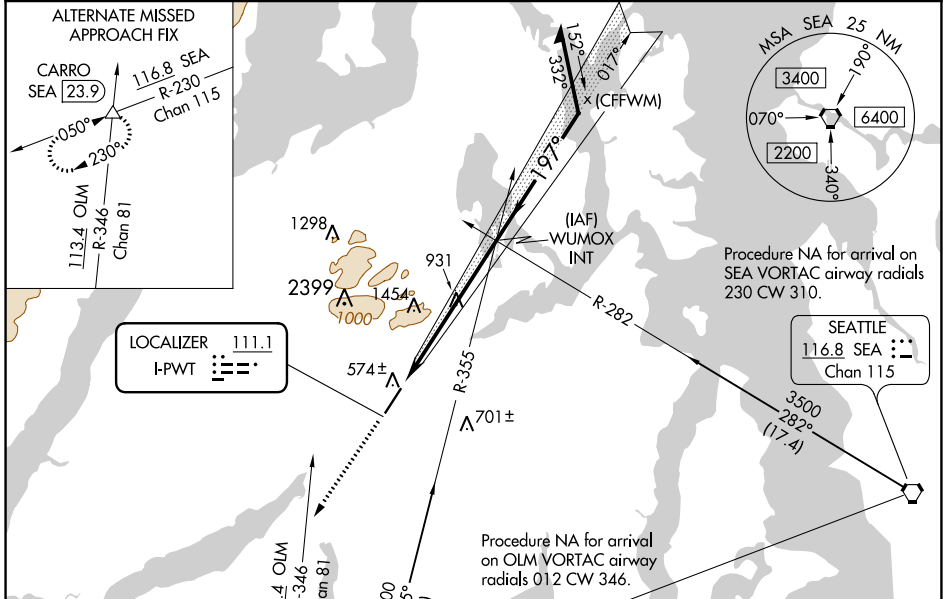
**MALSR**  
**AS**

**MISSED APPROACH:** Climb to 4000 on heading 197° and OLM VORTAC R-346 to CARRO INT/OLM 19.4 DME and hold, continue climb-in-hold to 4000.

AWOS-3PT  
**121.2**

SEATTLE APP CON  
**127.1 254.4 269.125**

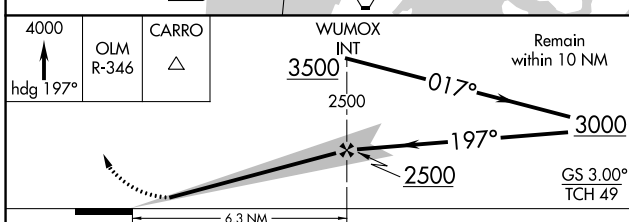
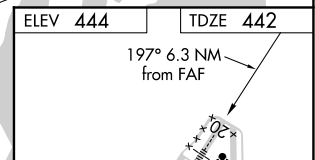
UNICOM  
**123.05 (CTAF) 0**



NW-1, 30 DEC 2021 to 27 JAN 2022

NW-1, 30 DEC 2021 to 27 JAN 2022

|          |          |
|----------|----------|
| ELEV 444 | TDZE 442 |
|----------|----------|



| CATEGORY          | A                         | B                             | C                             | D                             |
|-------------------|---------------------------|-------------------------------|-------------------------------|-------------------------------|
| S-ILS 20          |                           | 642-1/2                       | 200 (200-1/2)                 |                               |
| S-LOC 20          | 1200-1/2<br>758 (800-1/2) | 1200-3/4<br>758 (800-3/4)     | 1200-1 3/4<br>756 (800-2 1/4) | 758 (800-1 3/4)               |
| <b>C</b> CIRCLING | 1200-1<br>756 (800-1)     | 1200-1 1/4<br>756 (800-1 1/4) | 1200-2 1/4<br>756 (800-2 1/4) | 1240-2 1/2<br>796 (800-2 1/2) |

|                   |                          |
|-------------------|--------------------------|
| FAF to MAP 6.3 NM |                          |
| Knots             | 60 90 120 150 180        |
| Min:Sec           | 6:18 4:12 3:09 2:31 2:06 |