

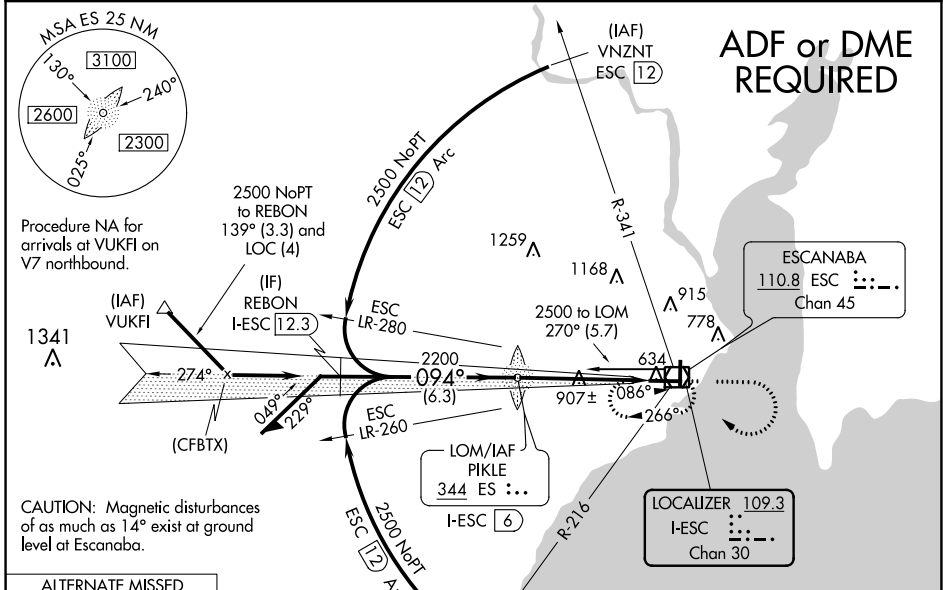
LOC/DME I-ESC 109.3 Chan 30	APP CRS 094°	Rwy ldg 6498 TDZE 609 Apt Elev 609
--	------------------------	---

ILS or LOC RWY 9

DELTA COUNTY (ESC)

<p>⚠ ADF or DME required. Night landing: Rwy 19 NA. When local altimeter setting not received, use Marquette altimeter setting and increase all DA 178 feet and all MDA 180 feet, increase S-ILS 9 all Cats visibility 1/8 mile, S-LOC 9 Cats C/D visibility 1/2 mile, Circling Cats C visibility 1/2 mile and Circling Cat D visibility 1/4 mile. For inoperative MALSRL when using Marquette altimeter setting, increase S-ILS 9 all Cats visibility to 1 mile, and S-LOC 9 Cats C/D visibility to 2 miles.</p>	<p>MALSRL</p>	<p>MISSED APPROACH: Climb to 2100 then climbing right turn to 2500 direct ESC VOR/DME and hold.</p>
--	---------------	---

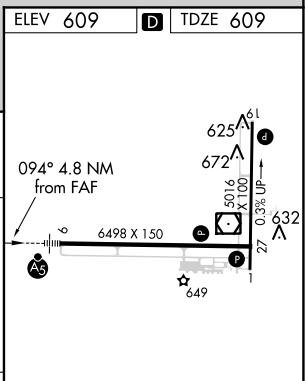
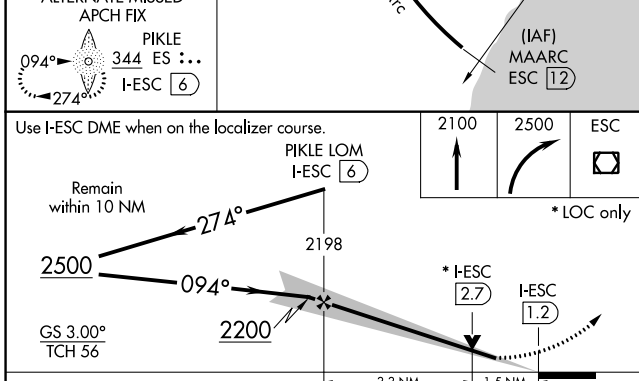
AWOS-3PT 121.425	MINNEAPOLIS CENTER 127.65	UNICOM 122.8 (CTAF)
----------------------------	-------------------------------------	-------------------------------



ADF or DME REQUIRED

ESCANABA
110.8 ESC ...
Chan 45

LOCALIZER **109.3**
I-ESC ...
Chan 30



CATEGORY	A	B	C	D
S-ILS 9		809-1/2	200 (200-1/2)	
S-LOC 9	1160-1/2	551 (600-1/2)	1160-1 1/8	551 (600-1 1/8)
CIRCLING	1160-1	551 (600-1)	1280-2 671 (700-2)	1480-2 3/4 871 (900-2 3/4)

HIRL Rwy 9-27	60	90	120	150	180
MIRL Rwy 1-19	4:48	3:12	2:24	1:55	1:36
REIL Rwy 1 and 27	FAF to MAP 4.8 NM				

EC-1, 30 DEC 2021 to 27 JAN 2022

EC-1, 30 DEC 2021 to 27 JAN 2022