

LOC/DME I-ESC <b>109.3</b> Chan 30	APP CRS <b>274°</b>	Rwy Idg TDZE Apt Elev	<b>6498</b> <b>596</b> <b>609</b>
--	------------------------	-----------------------------	---

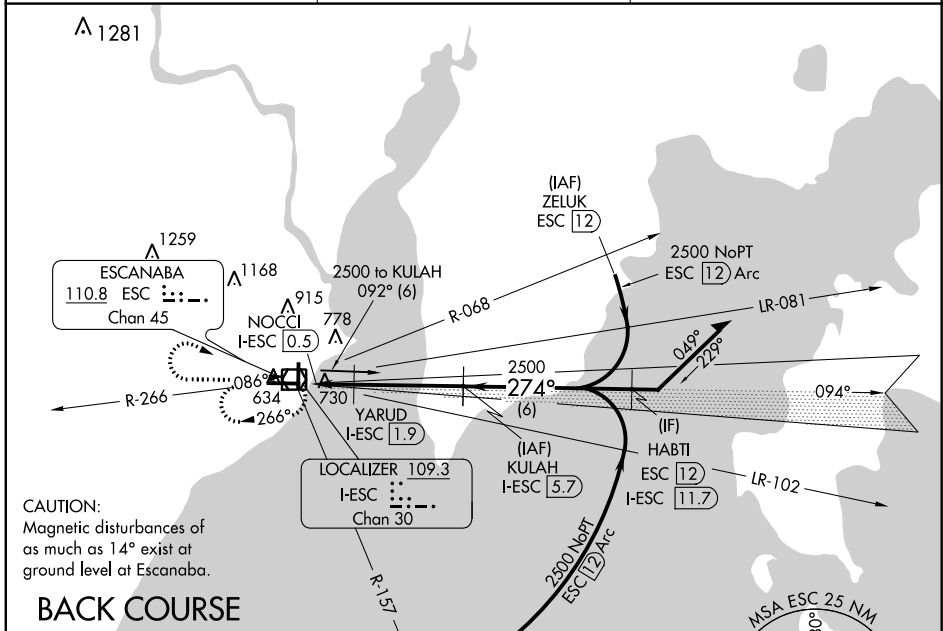
# LOC/DME BC RWY 27

DELTA COUNTY (ESC)

**⚠** Rwy 27 Straight-In and Circling and Circling to Rwy 19 NA at night. Helicopter visibility reduction below 1 SM NA. When local altimeter setting not received, use Marquette altimeter setting and increase all MDA 180 feet and S-27 Cat C and D visibility 3/8 mile and Circling Cat C visibility 1/2 mile and Cat D visibility 1/4 mile.

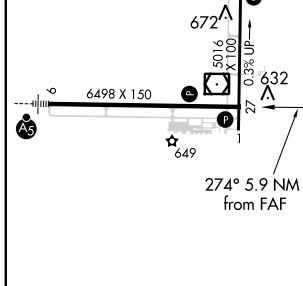
**MISSED APPROACH:** Climb to 2500 then right turn direct ESC VOR/DME and hold.

AWOS-3PT <b>121.425</b>	MINNEAPOLIS CENTER <b>127.65</b>	UNICOM <b>122.8 (CTAF) 0</b>
----------------------------	-------------------------------------	---------------------------------



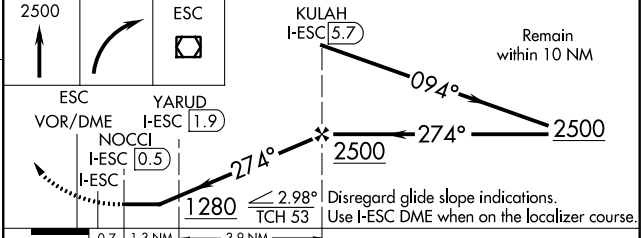
## BACK COURSE

ELEV 609	<b>D</b>	TDZE 596
----------	----------	----------



HIRL Rwy 9-27 **1**  
MIRL Rwy 1-19 **1**  
REIL Rws 1 and 27 **1**

## DME REQUIRED



CATEGORY	A	B	C	D
S-27	1040-1	444 (500-1)	1040-1 3/8	444 (500-1 3/8)
<b>C</b> CIRCLING	1060-1 451 (500-1)	1080-1 471 (500-1)	1280-2 671 (700-2)	1480-2 3/4 871 (900-2 3/4)

EC-1, 30 DEC 2021 to 27 JAN 2022

EC-1, 30 DEC 2021 to 27 JAN 2022