

WAAS CH 69333 W01A	APP CRS 004°	Rwy Idg TDZE Apt Elev	5016 600 609
--	------------------------	-----------------------------	---

RNAV (GPS) RWY 1

DELTA COUNTY (ESC)

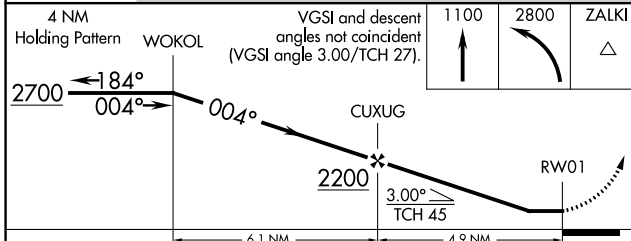
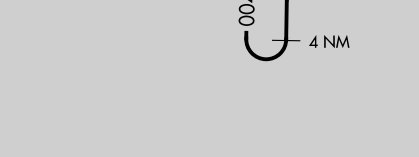
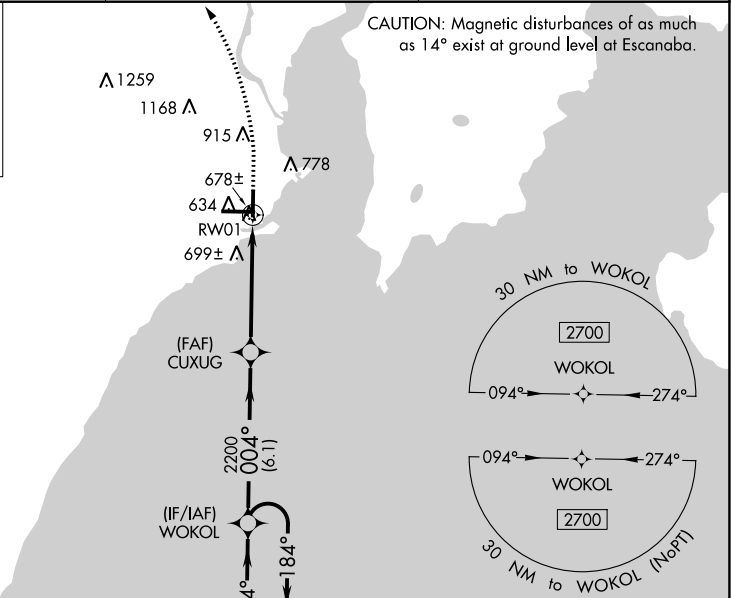
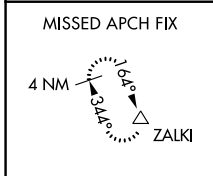
⚠ Rwy 1 helicopter visibility reduction below 1 SM NA. DME/DME RNP-0.3 NA. Straight-in Rwy 1 NA at night, Circling Rwy 1, 19 NA at night. When local altimeter setting not received, use Marquette altimeter setting and increase all MDA 180 feet and increase LP Cat C and D visibility 1/2 SM, LNAV Cat C and D visibility 5/8 SM, and Circling Cat C visibility 1/2 SM and Cat D visibility 1/4 SM.

MISSED APPROACH:
Climb to 1100, then climbing left turn to 2800 direct ZALKI and hold.

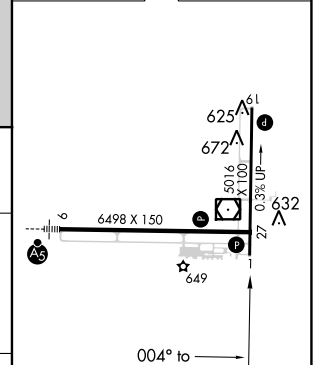
AWOS-3PT
121.425

MINNEAPOLIS CENTER
127.65

UNICOM
122.8 (CTAF) 0



ELEV 609 **D** TDZE 600



CATEGORY	A	B	C	D
LP MDA		940-1	340 (400-1)	
LNAV MDA		960-1	360 (400-1)	
C CIRCLING	1060-1 451 (500-1)	1080-1 471 (500-1)	1280-2 671 (700-2)	1480-2 ³ / ₄ 871 (900-2 ³ / ₄)

HIRL Rwy 9-27 **0**
MIRL Rwy 1-19 **0**
REIL Rwy 1 and 27 **0**

EC-1, 30 DEC 2021 to 27 JAN 2022

EC-1, 30 DEC 2021 to 27 JAN 2022