

WAAS CH 63128 W27A	APP CRS 274°	Rwy Idg TDZE Apt Elev	6498 596 609
--	------------------------	-----------------------------	---

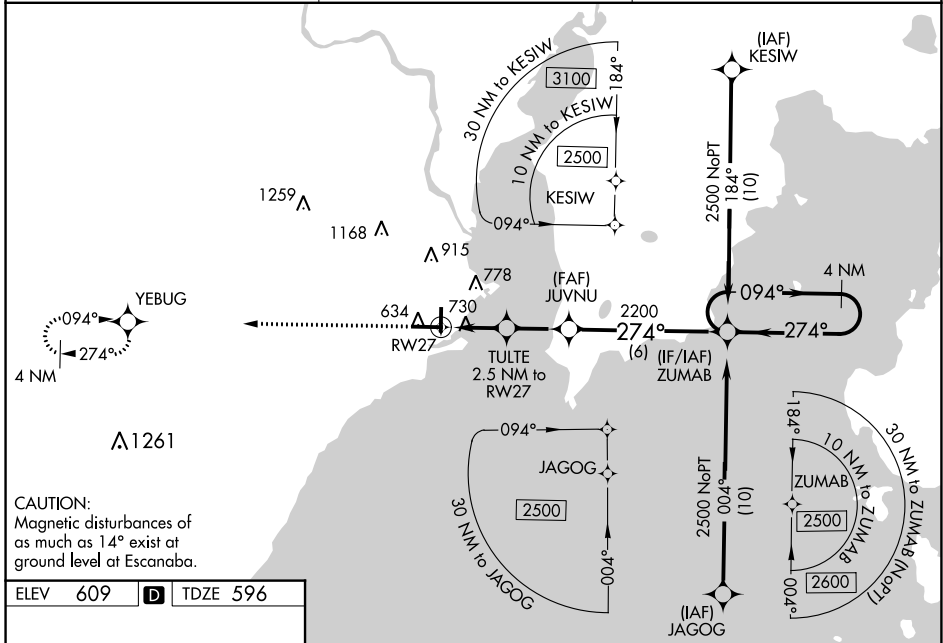
RNAV (GPS) RWY 27

DELTA COUNTY (E/S/C)

⚠ Baro-VNAV NA when using Marquette altimeter setting. For uncompensated Baro-VNAV systems, LNAV/VNAV NA below -16°C (4°F) or above 54°C (130°F). Rwy 27 Straight-in and Circling and Circling to Rwy 19 NA at night. DME/DME RNP-0.3 NA. Helicopter visibility reduction below 1 SM NA. When local altimeter setting not received, use Marquette altimeter setting and increase all DA 178 feet and all MDA 180 feet and increase LPV all Cats visibility $\frac{3}{8}$ mile, LNAV/VNAV all Cats visibility $\frac{3}{8}$ mile, LNAV Cat C and D visibility $\frac{3}{8}$ mile, and Circling Cat C visibility $\frac{1}{2}$ mile and Cat D visibility $\frac{1}{4}$ mile.

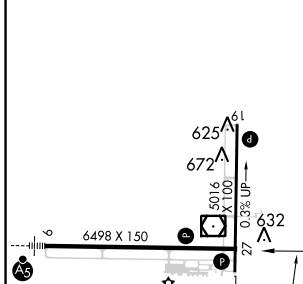
MISSED APPROACH:
Climb to 2500 direct YEBUG and hold.

AWOS-3PT 121.425	MINNEAPOLIS CENTER 127.65	UNICOM 122.8 (CTAF) 0
----------------------------	-------------------------------------	---------------------------------

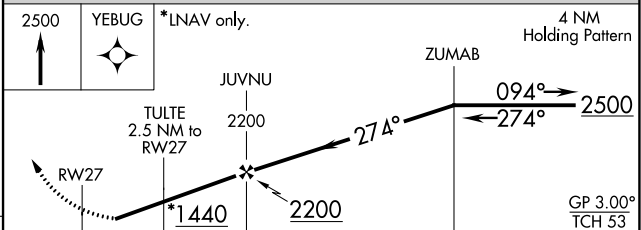


CAUTION:
Magnetic disturbances of as much as 14° exist at ground level at Escanaba.

ELEV 609	D	TDZE 596
----------	----------	----------



HIRL Rwy 9-27 1
MIRL Rwy 1-19 1
REIL Rwy 1 and 27 1



CATEGORY	A	B	C	D
LPV DA		846-1	250 (300-1)	
LNAV/VNAV DA		1076-1 $\frac{5}{8}$	480 (500-1 $\frac{5}{8}$)	
LNAV MDA	1040-1	444 (500-1)	1040-1 $\frac{3}{8}$	444 (500-1 $\frac{3}{8}$)
C CIRCLING	1060-1 451 (500-1)	1080-1 471 (500-1)	1280-2 671 (700-2)	1480-2 $\frac{3}{4}$ 871 (900-2 $\frac{3}{4}$)