

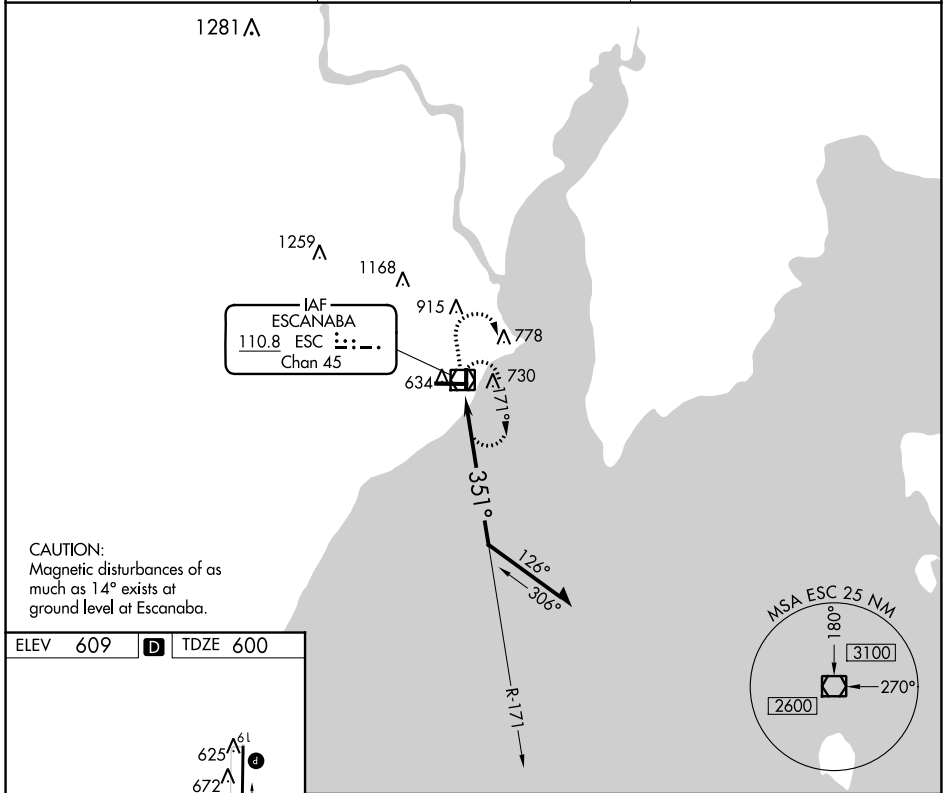
VOR/DME ESC <b>110.8</b> Chan 45	APP CRS <b>351°</b>	Rwy Idg TDZE Apt Elev	<b>5016</b> <b>600</b> <b>609</b>
--	------------------------	-----------------------------	---

**VOR RWY 1**  
DELTA COUNTY (ESC)

**⚠** Straight-in Rwy 1 NA at night, Circling Rwy 1, 19 NA at night. Rwy 1 helicopter visibility reduction below 1 SM NA. When local altimeter setting not received, use Marquette altimeter setting and increase all MDA 180 feet and increase S-01 Cat C and D visibility ½ SM, Circling Cat C visibility ½ SM and Cat D visibility ¼ SM.

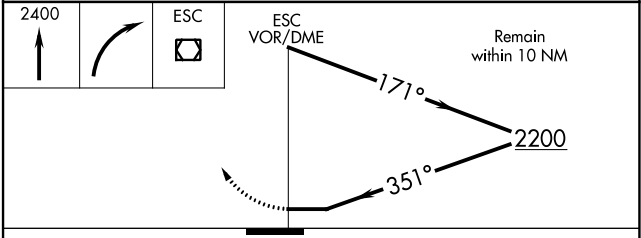
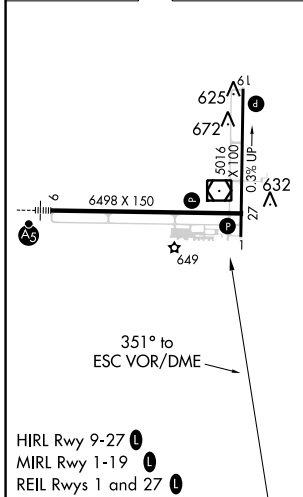
**⚠** MISSED APPROACH: Climb to 2400 then right turn direct ESC VOR/DME and hold.

AWOS-3PT <b>121.425</b>	MINNEAPOLIS CENTER <b>127.65</b>	UNICOM <b>122.8 (CTAF)</b>
----------------------------	-------------------------------------	-------------------------------



**CAUTION:**  
Magnetic disturbances of as much as 14° exists at ground level at Escanaba.

ELEV 609	<b>D</b>	TDZE 600
----------	----------	----------



CATEGORY	A	B	C	D
S-1	1080-1 480 (500-1)		1080-1¾ 480 (500-1¾)	
<b>C</b> CIRCLING	1080-1 471 (500-1)		1280-2 671 (700-2)	1480-2¾ 871 (900-2¾)

EC-1, 30 DEC 2021 to 27 JAN 2022

EC-1, 30 DEC 2021 to 27 JAN 2022